

Newhaven Town Council Annual Report 2014-15



The Town Mayor

Councillor Judith Ost



It has been a pleasure and an honour to take the role of Mayor for a year. It has been busy year and I have met some wonderful people working hard in, with and for our town.

It is hard to sum up a Mayor's year in a few words as there has been such a variety of things to do but I'll have a go anyway.

It will come as no surprise to anyone I've known for a while to know that I have greatly enjoyed the huge variety of good things our children and young people get up to. I have visited them all in their schools and nurseries at some time or another and they have shown me what they have been doing. I joined Seahaven Academy at their Foundation Day and Harbour School at its official opening of the newly extended building. Denton children presented their work on what they liked about our town and Railway Nursery

invited me to an anniversary celebration.

Out of school our young people are no less active. Guides, Scouts, Sea Cadets, Air Cadets, Youth Clubs, art clubs, theatre groups and others have proudly shown me what they do and what they have achieved. I've been to two wonderful performances by Seaford Musical Theatre where youngsters from our neighbouring towns join with ours to make great entertainment. I had the pleasure of hosting an awards ceremony for young people you thought were worthy of recognition at our own awards ceremony. It has been a great pleasure to meet some of the many people who give their time and



talents freely to support and guide our young people through a huge variety of different activities and organisations.

And so many community events, from Denton Community Challenge and the Fish Festival, which were great fun to join in with, to Open Gardens for both the Lifeboat and Macmillan there has been no shortage of things to do. There was a sponsored walk for Guide Dogs, the Mencap Christmas Fayre, the Annual Armed Forces day in Seaford which drew people from across the area, welcoming the Steam Train to mark the 150th anniversary of the extension of the line to Seaford and many more.





I've met the Rotary Club and Seahaven Lionesses who get together and support local groups with much needed gifts. Then there are clubs run by and for older folk like Elderberries and Bluebirds. And everywhere I go to see older folk or people who cannot get about so easily there is CTLA, with their amazing band of volunteer drivers and their endless patience, getting to know and assisting people to have an active social life, do their own shopping and get to the doctors as well as taking them on outing further afield.

I have attended as your representative, AGMs of the local parts of National charities such as Samaritans, Age UK and

the Guides as well as the Friends of the hospitals trust. It is interesting to find out more about what they all do and to get a sense of just how much goes on behind the scenes to keep all these things going.

From the Lifeboat Society to Coastwatch, The Breakout Community Trust to the Hillcrest Centre, we have so many people and organisations contributing to the life of our town it would be very difficult to meet them all in just one year or even list them.

You will find some of them in articles and in the events listings in "Newhaven Matters". I am particularly pleased that the Town Council has been able to establish this magazine by and for Newhaven. The articles come from you so please do contribute.

And while I'm in the council, a big thank you to all our staff who keep us on the straight and narrow with the bureaucracy and work hard to implement our decisions.



There could be no description of this particular year without mentioning all the commemorations. I represented you all at the D Day commemoration in Portsmouth, and on the day itself here at the Fort where some local children sang for us. There was a moving service of remembrance at St Michaels to mark the start of WW1 and as always in August the dreadful Dieppe Raid of 1942 was remembered both sides of the channel.



In the new school year our young people were all learning about WW1 and we presented them all with commemorative medals to mark WW1. They laid wreaths with us all at the annual remembrance day service on the memorial green alongside the British Legion, the Canadian Veterans Association and many others.

Behind the scenes there were a number of meetings about the continuation of the Ferry service. The meetings continue, we have more crossings this summer to encourage people to make the good old day trip. Hopefully we will hear good news for the long term future of the line very soon.

Sadly not all our connections with our French neighbours are so cordial! As I write this we still are still waiting for a date from them about a meeting to see if we can come to an agreement about the West Beach now that the court

battle has ended. We can still ask for **permission** to use the beach even though the Supreme Court said that we do

not have the right. There have just been elections in France too so it may take a week or two to get this organised. The first job for whoever is elected to our Town Council!

We also now have a friendship and co-operation agreement with Vinh City in Vietnam. I've told the story of how that came about several times! As a result I've been, on your behalf, to the Embassy and met students from Viet Nam at Sussex University. I hope there will be exchanges amongst our young people and useful business opportunities too. Vinh City is very much bigger than Newhaven but also a port and interested in the green clean marine theme.



Also on Green and Clean we are now part of a UNESCO World Heritage site of Brighton and the Lewes Downs. We are up there with Stonehenge, the Canadian Rocky Mountains and the Taj Mahal.! It extends 2 miles out to sea from Shoreham to Newhaven as well as taking in the South Downs out to Poynings, Ditchling and Glynde.



And ,not forgetting the economic life of the town, both the Job Centre and SCDA have opened services which will help people acquire new skills and find work. I have cut a few ribbons for new businesses and wish them all well. We are lucky to have an active Chamber of Commerce who get together regularly to share expertise and ideas.

As my year comes to an end we are looking forward to the opening of the UTC, I was able to see how work was getting just recently when Norman and Vince

Cable came to visit. It will be a great asset to our town focussing on the teaching science and engineering. We are also waiting to hear if Newhaven has the contract for the building of the wind farm.

I would like to say a big thank you to everyone who has welcomed me to their places and events. It has been a real privilege, awe inspiring and great fun. An even bigger thank you to all the volunteers. You know who you are! Our town would not be what it is without you!

Councillor Judith Ost, Town Mayor

Town Council Activities

NEWHAVEN NEIGHBOURHOOD PLAN



The town council has been working hard this year to produce a Neighbourhood Plan which will help the community to shape the area it lives in. Neighbourhood Plans can set out what type of development is needed such as housing, employment and recreation space, where new development will be located, and what it should look like.

The first essential stage of producing the Neighbourhood Plan is to find out what local people think through a series of local consultations. Over the past year we have distributed three separate questionnaires to all households in the town using the town council's

Newhaven Matters magazine. We have also held two public meetings and five exhibitions in different locations around the town. A focus group of about 20 local people who are particularly interested in the Neighbourhood Plan has been meeting fortnightly to help the town council get things right.

The next stage in the production of the Neighbourhood Plan will be to start writing the land use policies to be included in the plan. Full public consultation will continue as the Plan develops. There will be a local referendum on the final version of the Plan which is expected to take place in May 2016.

WEST BEACH

The Supreme Court sat in November 2014 to decide the final outcome of the town council's village green application. The decision, announced on 25th February 2015 was a devastating one for the town. The five judges agreed to allow NPP's appeal and decided that the beach cannot be registered as a village green.

The town council has not given up the fight to try and get the beach re-opened. It will continue to try and negotiate with NPP as it has done throughout the process, trying to reach

agreement outside the court. A letter has been sent to NPP's French directors in Rouen asking for a meeting to discuss the situation further. In the meantime, a video is also being made showing how local people feel about the closure of the beach. It is hoped that this can be shown to the board of directors to bring home to them the effects of their decisions on the people of Newhaven.



Meanwhile, the town council's right of way application will continue to be fought and will be the subject of a Public Inquiry to take place at Shakespeare Hall in Fort Road on 2nd-6th June 2015.

NO COLD CALLING ZONE

Public consultation carried out during the spring of 2014 revealed widespread and almost unanimous support for the idea of a No Cold Calling zone being created for Newhaven.

As a result of this, the town council formally agreed to this proposal and stickers were distributed to every household in the town. Notices have now also been erected at the town's boundaries and Newhaven is, accordingly, now an official No Cold Calling zone. This should protect the town's more vulnerable residents from unwanted and intrusive doorstep callers and traders and reduce the number of distraction burglaries in the town.



Newhaven Town Council carries out much of its work through its committees.

Policy & Resources Committee Chair – Councillor Rod Main



The P&R committee has considered several important projects and policies throughout the year. It is, of course, important that the council has the proper policies in place to deal with situations as they arise and to comply with the latest legislation. In particular, it is now permitted for members of the public to video council meetings. However, to ensure that these may not be misused or edited to construe a misleading position by the council, it was agreed that the council should make its own video recordings and ensure a correct record is kept. It is not intended that these should be made public.

P&R has also approved resource to be spent on further upgrades and long overdue maintenance work on its properties. Several of the meeting halls needed improvements to their internal facilities and external weather proofing. In addition, work is needed to be carried out at the cemetery buildings some of which is to protect public safety.





The approved expenditure also highlighted a potential problem in that it would exceed the level at which we could claim back VAT. This is because we had agreed with the Inland Revenue that we would not charge VAT on lets to our halls. However, if we exceeded the allowed level of expenditure we would then be liable for all the VAT that we hadn't previously charged. To regularise this, we needed to start changing VAT as part of hire charges and for that we needed the Inland Revenue to agree to change our status. This action was approved by P&R and the changes were

allowed by the Inland Revenue. We also agreed that for the current financial year, the town council itself would cover the VAT element of the hire charges so as not to affect previously agreed rates with regular users.

It was also P&R's remit to recommend a budget and set precept. After due consideration of all the material facts, not least a cut in grant from LDC equivalent of 2%, the unanimous decision was that we should recommend a small rise (1.4%) to offset this cut and allow the council to continue to function at last year's levels. This was subsequently approved by a majority vote at full council.

Councillor Rod Main, Chair of Policy & Resources Committee

Planning & Development Committee Chair – Councillor Steve Saunders



The Town's Planning Committee has been consulted on a number of applications during the year, at its meetings that are held every 3 weeks. We are one of a number of consultees to the District Planning Authority, which ultimately makes the decisions on the majority of applications. At our meetings, we actively encourage local residents to put forward their views on the applications under consideration and invite developers and interested groups to give presentations about potential projects within the Town. This enables local people as well as us, to feed into designs and proposals, prior to the applications being formally presented.

Where possible, members of the public are able to engage fully with the committee, in order to fully express views and opinions. Support is often given by the committee members at District Council Meetings, when supporting or objecting to applications.



A selection of applications considered in the last year:

- Detailed planning application for the New UTC at the Port
- Detailed planning application for the new Fire Station at the former Saxonholme site
- Several planning applications to change retail premises into residential within the Town Centre
- Applications for development of housing on part of the Searchlight site in Denton
- Outline application for extension of the East Harbour Arm, Deepwater Port and associated environmental enhancements.



The UTC and Fire Station are now well underway and the regeneration of the Town appears to be pressing ahead. The input and support of the Town's Planning Committee has been useful in helping to bring these forward and requests to amend the design of both these applications were successfully included in the final designs of both developments. The Town centre remains a focus of our committee and we continue to fight to preserve the commercial status of the High Street.

The Town is earmarked for a substantial amount of development in the future and this committee is an

important tool to ensure that the residents of Newhaven have their opinions listened to. I must thank those members of the committee for their help and support and the residents, developers and local groups that have taken the time to feed into our responses on so many applications over the past year. Thanks too, go to my Vice Chair Councillor Rod Main. He has deputised for me on a number of occasions this year, for which I remain indebted to him. I also would like to thank the Town Clerk Jacky Cole for her support, invaluable information and minute-taking of the meetings throughout the year, along with all the other officers at the Council.

Councillor Steve Saunders, Chair of Planning & Development Committee

Community Engagement & Promotion Committee Chair – Councillor Julie Carr



The Community Engagement and Promotion Committee oversees Council communications and promotions such as its website, newsletter and social media and is also responsible for supporting tourism and promotional activities, community events, civic and commemorative awards and the awarding of grants.

The Newhaven Matters magazine launched this time last year has proved to be a great success. The magazine is produced quarterly and the fifth edition was delivered to all households in the town at the beginning of April. It includes lots of information about things going on in the town and local organisations as well as news from the town council itself.



Once again the committee has been able to support a number of local events with funding and over the past year this has included Meeching Amateur Dramatics' excellent production of "The Better 'Ole" at Newhaven Fort last summer – a wonderful recreation of an original First World War play. We also supported the Diep Haven festival – a rather quirky cross Channel arts event and a story telling event at the RNLI. The Tour of Britain visited Newhaven in September 2014 and the Fete de Newhaven took place on the same day with a cycling theme to add extra value and interest to the day for local people, again with support from this committee. The town council organised a photographic competition for the best photograph taken in Newhaven on the day. The Seahaven Business Awards will take place on 8th May 2015 and have also received financial support from our committee.

2014 marked the 100th anniversary of the outbreak of the First World War, a conflict which saw Newhaven playing an important role as a major supply port for the men fighting in the trenches in France. The town council has been fortunate enough to gain Heritage Lottery funding for a major project "Newhaven's First World War" to create a lasting legacy of the anniversary with a poppy trail of lecterns around the town telling the story of Newhaven during the First World War, online information, workshops, talks and newsletters.



The Newhaven Community Awards are overseen by this committee. This year's awards were for young people and were presented by the Mayor at the annual Town Meeting in March. The evening was a really lovely occasion and it was wonderful to see the achievements of some of the town's young people recognised in this way.

Councillor Julie Carr, Chair of Community Engagement & Promotion Committee

Environment & Open Spaces Committee

Chair – Councillor Steve Saunders

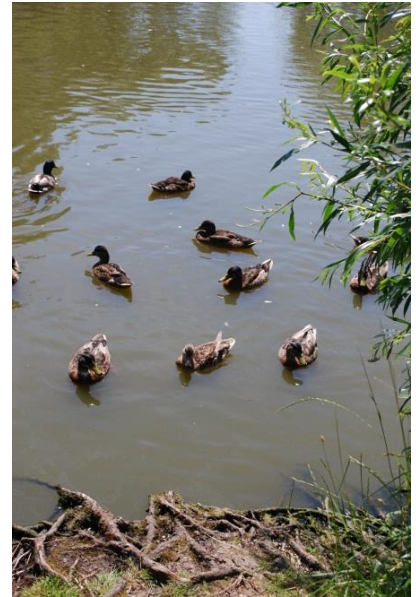


The Environment and Open Spaces (EOS) Committee is responsible for looking after the open spaces provided or managed by the town council and for improvements to the town's public environment which can be undertaken by the town council.

The committee has continued to move forward with a number of projects in the Town and is supporting newly-formed community groups, such as the Friends of Riverside Park and the neighbouring Friends of Valley Ponds.

Following the work carried out last summer to make safe the old air raid shelters below the Bay View Amenity Area, the committee are now looking at further improvements and equipment that can be provided.

The committee has recently given the go-ahead for a new bus stop on the south-bound side of the C7 Lewes Road into Newhaven, providing bus users in that area with a safe place to alight. There used to be a stop there many years ago, but it fell into disrepair and was abandoned. A local resident approached the committee and put forward a worthy case for its reinstatement. The committee whole-heartedly agreed and the stop should be in place by the Summer of 2015.



The memorial bench has been installed at Castle Hill and many residents have taken up the offer to commemorate loved ones, with etched slats upon the feature.

The committee is presently looking at a new Memorial Garden at the Lewes Road Cemetery, with the present facility nearing capacity. The Clerk to the Council is looking at options including a Memorial Wall.

CCTV cameras are about to be updated in the town and should help support the local neighbourhood police force, with the new equipment's sharper images.

Devolution of various assets from the District Council, such as the Fort Road Recreation Ground, will increase the responsibilities of the Committee in the future and the opportunities for new projects will make this an exciting challenge in the coming year.

I have enjoyed my time as Chair of this Group and would like to thank its members for their support and that of the local community groups that are such an integral part of this Town

Councillor Steve Saunders, Chair of Environment & Open Spaces Committee



The Role of Newhaven Town Council

There are three tiers of local government with areas of responsibility in Newhaven - East Sussex County Council, Lewes District Council and Newhaven Town Council.

East Sussex County Council's responsibilities include:

- ◆ Adult Social Care, working in partnership with East Sussex Downs & Weald PCT and others, to assess the needs of and commission services for older people and those with disabilities, either in their own homes or in residential placements;
- ◆ Waste Disposal, such as by landfill or incineration
- ◆ Children's Services, leading the Children's Trust arrangements, supporting school improvement, commissioning services for children and families through Children's Centres and otherwise, and managing fostering and adoption;
- ◆ Transport and Environment, including road safety; the maintenance of footways, roads and bridges, and street lighting; support for public transport; rights of way and access to the countryside; and protection of the Downs and Heritage Coast;
- ◆ A range of other services, including Libraries, Archives and Records Management, Trading Standards, Adult Community Learning, and the Registration Service.

Lewes District Council's responsibilities include:

- ◆ Housing
- ◆ Deciding planning applications
- ◆ Rubbish collection from premises in the town; provision of recycling facilities
- ◆ Street cleansing
- ◆ Environmental health
- ◆ Provision of leisure and sports facilities, such as the Seahaven Pool, recreation grounds
- ◆ Collection of Council Tax on behalf of all three tiers of local government
- ◆ Licensing of taxis

Newhaven Town Council is the equivalent of a village parish council. It receives annually a small percentage of the money raised by Council Tax, known as "the Precept." This money can be spent on the provision of various things that are of particular benefit to the local community and which the Town Council feel are not adequately provided by the other two tiers.

Eighteen local people serve as Councillors on the Town Council. They are all volunteers and receive no pay for the work they do on behalf of the town. Elections are held every four years.

During 2013-14 the Town Council adopted a new committee system with three main standing committees – Policy & Resources, Environment & Open Spaces and Community Engagement & Promotion. All meetings of the Council are open to the public and there is a short period at the beginning of each meeting put aside for questions from the public and for the receipt of petitions.

An important part of the role of the Town Council is to represent the views of the town in response to various public consultations.

On a regular basis our Planning Applications Committee meet to look at planning applications received by the Planning Authority and to pass on to them our comments. The Town Council always try to represent the views put forward by local people in this regard, although sometimes this can prove difficult when an application is controversial and has both vocal support and opposition amongst local residents. Nevertheless, members of the Planning Applications Committee take a vigilant approach in representing the local viewpoint, and encourage objectors/supporters of planning applications to attend meetings and put forward their views. When an application is of particular public interest a special public meeting may be held.

At the present time, Newhaven Town Council provides the following for the local community:

- ◆ The Town Council **offices** in Fort Road act as an information point for local residents. The offices were the subject of a major refurbishment in 2003-4 and are people friendly, with easy public access from street level. Internally there is a lift for the less agile or parents with buggies and the interior is light, modern and convenient. Current planning applications may be viewed there during normal office opening hours. The building also has large reception area for viewing materials and a large private meeting room. Leaflets and posters are displayed concerning local events, places of interest and other items of general interest. The meeting room is modern and well equipped and is in regular use in hosting meetings. The offices are owned by the Town Council.
- ◆ Four **social centres** are owned, maintained and run by the Town Council. They are available for hire by local organisations and individuals. They are Denton Social Centre, East Side Social Centre, Lewes Road Hut and Meeching Hall.
- ◆ Some of the town's **recreation grounds** are maintained by the Town Council. These are the Denton Recreation Ground and Children's Play Area, the Valley Road Play Area, and the Lewes Road Recreation Ground and Children's Play Area. Other local recreation grounds and play areas are the responsibility of Lewes District Council.
- ◆ Three **amenity areas** in the town are maintained by the Town Council. The Bay View Amenity Area in Bay View Road is owned by the Town Council and maintained as a grassed area with public seating. The Valley Ponds area is owned and looked after by the Town Council as a wildlife conservation area and amenity area for local residents. The strip of land known as the Rose Walk Amenity area (behind Southdown School, linking Church Hill and Rose Walk) is owned by East Sussex County Council and maintained as a grassed area by the Town Council.
- ◆ The town's **war memorials** are looked after by the Town Council. All three memorials – the Canadian Memorial, the Mercantile Marine Memorial (also known as the Transport Memorial) and the town's War Memorial – now stand together in the Memorial Gardens in South Way. Each year in August, the Town Council hosts a commemoration service at the Canadian Memorial on the anniversary of the Dieppe Raid in 1942. The Town Council also works in partnership with the Royal British Legion to organise the annual service of remembrance during November.
- ◆ **Newhaven Cemetery** is owned by the Town Council, which acts as the local burial authority. The Cemetery includes burial plots, a garden of remembrance for ashes interments, and a chapel which is used for some funerals.
- ◆ There are a small number of **allotments** at Newhaven Cemetery, which are let to local residents for a nominal annual fee. The allotments at East Side are owned and controlled by Lewes District Council.
- ◆ The Town Council owns and funds the **CCTV cameras** in the town centre, which are operated and maintained by Sussex Police.
- ◆ The **Christmas Lights** in the town centre are owned and put up each year by the Town Council. A number of local businesses allow the Town Council use of their electricity supply for this purpose. The bulbs are LED energy saving bulbs.
- ◆ The **floral boat** at the junction of Bridge Street and South Way is owned and maintained by the Town Council. The Town Council has also planted bulbs in grass verges in various locations in recent years. Additionally, support is given by the Town Council to Newhaven in Bloom, who provide many of the floral displays in the Town in the summer.
- ◆ A **community bus service** operating on a door to door dial-a-ride basis started on 1st April 2009, funded by the Town Council and operated by Community Transport for the Lewes Area (CTLA). On 2nd February 2015 the CTLA launched a new free non-emergency service to help local people to and from their homes to their GP Practice and to Lewes Victoria Hospital.
- ◆ Some of the **public seats** in the town are owned and maintained by the Town Council.

- ◆ There are 9 Town Council **noticeboards** around the town which are used for the display of Town Council minutes and agendas and a list of Town Councillors as well as for information on local events.

The Town Council is also consulted on wider matters, such as the Lewes District Sustainable Community Strategy and the Local Development Framework plan.

The Town Council is represented on the following outside bodies:

Access in Seaford and Newhaven Committee

Age Concern Day Club

Community Transport for the Lewes Area (CTLA)

INPACT

Lewes District Association of Local Councils

Lewes District Foyer

Local Partnership for Children

Meridian Mature Citizens Forum

Newhaven in Bloom

Newhaven Strategic Network

Open Spaces Group

Parishes of the Lower Ouse (POLO)

Newhaven Town Council Structure 2014-15

Town Council Members

Denton Ward

Peter Clark	24 Norton Terrace, Newhaven
Diane Hall	7 Fairholme Road, Newhaven (Deputy Mayor)
Ann Giles	41 Arundel Road, Newhaven
Roderick Main	c/o Town Council Offices (<i>Chair of Policy & Resources Committee</i>)
Angela Simmons	Cedars House, 1 Heighton Road, Newhaven

Meeching Ward

Graham Amy	71 Court Farm Road, Newhaven
Paul Boswell	Meeching Estate Agents, 43 High Street, Newhaven
Carla Butler	6 Southdown Close, Newhaven
Maurice Langham	34 Mariners Wharf, Fort Road, Newhaven
Chris Bradshaw	132 Court Farm Road, Newhaven
Sebastian Hale-Smith	26 Meeching Rise, Newhaven
Jane Scott	c/o Town Council Offices

Valley Ward

Julie Carr	73 Iveagh Crescent, South Heighton (<i>Chair of Personnel & Community Engagement & Promotion Committees</i>)
Judith Ost	Mary Ann's Cottage, Lewes Road, Newhaven (<i>Mayor</i>)
Pat Ost	Mary Ann's Cottage, Lewes Road, Newhaven
Steve Saunders	25 Southdown Road, Newhaven (<i>Chair of Environment & Open Spaces and Planning & Development Committees</i>)
Janice Butler	6 Southdown Close, Newhaven
Darren Grover	c/o Town Council Offices

Staff

Clerk to the Council	Jacky Cole
Responsible Finance Officer	Ruth Durrant
Head of Strategic Development	Susie Mullins
Administration & Finance Officers	Jill Marshall
Assistant to the Clerk	Nicky Still (from February 2014)
Caretaker	Kevin Lewry (from April 2014)

Financial Summary 2014-15

FINANCIAL SUMMARY

The Town Council's full accounts for the year 2014/15 will be available later in the year for public inspection.

Income

The Town Council's budget is comprised of the amount paid by residents of the town (via the Council Tax) and the amount raised by income from rentals, lettings, bank interest and other fees and charges.

2014/15

Precept (Council Tax)	£ 344,332.00
LDC Grant	£ 56,783.00
Income (budgeted)	<u>£ 82,013.00</u>
	<u>£ 483,128.00</u>

Expenditure

The Town Council's expenditure is controlled by a budgeting and monitoring process which categorises expenditure into separate headings.

For the year 2014/15 the budgeted figures were

Administration/Office	£ 75,184.00
Staff and Training	£159,637.00
Building and Grounds Maintenance	£101,464.00
Community Services/Engagement & Promotion	<u>£ 145,279.00</u>
Partnership/Support and Services (CCTV Cameras, Christmas lights, grants, play areas, Citizens Advice Bureau, School Holiday Activities)	<u>£481,564.00</u>

The Town Council also has an Earmarked Reserves Budget. This is used for projects for which it may be necessary to accumulate funding over a number of years or for special one-off funding demands.

During the year 2014/15, the following expenditure has been made from the Earmarked Reserves:

West Beach Court Cases	£ 94,499.00
Capital Expenditure (Lewes Rd Hut Refurbishment)	£ 23,487.00

During the year 2014/15, the following grants were awarded by the Town Council:

1 st Newhaven Brownies		200.00
2 nd Denton & South Heighton Scout Group		150.00
2 nd Newhaven District Rainbows		150.00
Art Techniques		400.00
Association Cybèle		1000.00
ATC 1218 Newhaven Squadron		500.00
Breakout Community Trust		200.00
DaSH JFC		400.00
Deans Senior Tea Club		200.00
Denton & Newhaven Guides		200.00
Denton Community Challenge		750.00
Denton Women's Fellowship		200.00
Friends of Riverside Park		500.00
Guesthouse Storytellers (Tales of Africa)		300.00
Haven Harmonies		200.00
Home-Start East Sussex		1160.00
Jack and Jill Toddler Group		200.00
Meeching Amateur Dramatics		200.00
Meridian Mature Citizens Forum		200.00
NCI Newhaven		200.00
Newhaven & Peacehaven U3A		200.00
Newhaven & Seaford Sailing Club		200.00
Newhaven CC Youth Section		365.00
Newhaven District Senior Section		200.00
Newhaven FJC		200.00
Newhaven Tennis Club		200.00
Newhaven Twinning Association		250.00
NIPPERS		100.00
Play with Clay		100.00
Rock Solid Youth Club		200.00
Rotary Club of Newhaven		200.00
Royal Voluntary Service		200.00
Seahaven District Scout Council – Scoutex		100.00
Seahaven FM		266.00
Seahaven Veterans and Armed Forces Day		250.00
Vitalise		350.00

Note:

The accounts of Newhaven Town Council are audited each year in compliance with the Audit Commission Act 1993 - Accounts and Audit Regulations 2003 (SI 2003/553).

The accounts for the year 2013/14 have been duly audited and certified by the external auditor.