



Newhaven *Matters*

Winter 2021 // Issue N° 28



© Peter Lambert

Welcome to the Winter edition of Newhaven *Matters*, the free newsletter for Newhaven residents produced by Newhaven Town Council.





Contact your local Town Councillor

DENTON WARD



Bill Giles
t: 07720 399189
e: Cllr.Bill.Giles@
newhaventowncouncil.gov.uk



Angela Simmons
t: 01273 515189
e: Cllr.Angela.Simmons@
newhaventowncouncil.gov.uk



Charlie Carr
t: 07952 525079
e: Cllr.Charlie.Carr@
newhaventowncouncil.gov.uk



George Taylor
t: 07479 077776
e: Cllr.George.Taylor@
newhaventowncouncil.gov.uk

NORTH WARD



Steve Saunders
t: 07976 371116
e: Cllr.Steve.Saunders
@newhaventowncouncil.gov.uk



Paula Woolven
t: 07710 426 321
e: Cllr.Paula.Woolven@
newhaventowncouncil.gov.uk



Lesley Boniface
t: 07979 763281
e: Cllr.Lesley.Boniface@
newhaventowncouncil.gov.uk

CENTRAL WARD



Christoph von Kurthy
t: 01273 514540
e: Cllr.Christoph.vonKurthy@
newhaventowncouncil.gov.uk



Paul Boswell
t: 01273 515566
e: Cllr.Paul.Boswell@
newhaventowncouncil.gov.uk

SOUTH WARD



Graham Amy
t: 01273 514942
e: Cllr.Graham.Amy@
newhaventowncouncil.gov.uk



Heather Pinky McLean
t: c/o 01273 516100
e: Cllr.Pinky.McLean@
newhaventowncouncil.gov.uk



June Dyer
t: 07434 067469
e: Cllr.June.Dyer@
newhaventowncouncil.gov.uk



Kim Bishop
t: 07793 358790
e: Cllr.Kim.Bishop@
newhaventowncouncil.gov.uk



James MacCleary
t: 01273 514452
e: Cllr.James.MacCleary@
newhaventowncouncil.gov.uk



Joe Emery
t: 07735 061165
e: Cllr.Joe.Emery@
newhaventowncouncil.gov.uk



Marlene Amy
t: 01273 514942
e: Cllr.Marlene.Amy@
newhaventowncouncil.gov.uk

Winter 2021



Hello Newhaven.

The Town Mayor, Graham Amy has asked me to write the introduction and welcome you all to this edition of Newhaven Matters.

I'm sure you will agree it's been a trying time for our community but there is now light at the end of what has seemed a very dark and long tunnel at times.

During Lockdown 2 it was great to see so many of our town's businesses adapt and continue to provide services where they were able. On their behalf thank you for supporting them.

Since the last issue Graham and I have been busy attending virtual meetings which is becoming the norm but it's great that we can still promote Newhaven. We also took part in the Remembrance Sunday service in November which unfortunately had to be a small attendance. Hopefully next year we will be back to full church service at St Michael's and parade to the Memorial Green.

By the time you receive this edition we will have hopefully had the lovely Snow Queen

event at the Bandstand. I understand it sold out really quickly and extra performances were added.

If you follow my Facebook page you will have seen that I have suggested we have a memorial built to those lost at sea following the tragic events of the Joanna C. I hope to be able to update you on the progress in the next edition as plans come together over the next month or so.

On behalf of myself and my family, fellow Councillors and Town Council staff I hope you have an enjoyable Christmas and a happy and healthy New Year.

Lesley Boniface

Deputy Mayor of Newhaven

If you would like to advertise, have a story you would like included in future issues, or an event you would like included in the What's On section, please email Nicky Still nicky.still@newhaventowncouncil.gov.uk or phone her on 01273 516100.

Contents

Newhaven Foodbanks	04	Tide Mills	14
Havens Community Hub	05	Newhaven Day Club	14
Hidden Disabilities	05	Newhaven Historical Society	15
St Michael's Church	06	Photo competition winners	16
SCDA News	07	Remembrance Sunday	17
Newhaven Town Crier	08	Newhaven Wellbeing Centre	17
Harbour Memorial Bench	09	Newhaven's 'Wood-wide Web'	18
Haven Harmonies	09	Photographers at Seahaven Academy	19
Town Council meetings	09	CTLA	20
Riverside Park	10	Grants Available for Local Organisations	20
Newhaven Tree Wardens	10	Citizens Advice	21
OurNewhaven Project	11	EU Settlement Scheme	21
Newhaven Town Deal	12	What's on	22

NEWHAVEN FOOD BANKS

Did you know that there are two food banks in Newhaven?
They tell us here how they have responded to increased need during the pandemic.

NEWHAVEN BAPTIST CHURCH FOOD BANK

We are here to help!

After being part of the Breakout Centre in the centre of town for many years, we now run the food bank at Newhaven Baptist Church. Like many others all around the country, we have seen a massive increase in demand.

Anyone who needs it can come to collect a food bag on Wednesday or Friday mornings, and all we need is

your name and address, which will be treated in confidence.

Although the need has increased, we have been very well supported by local businesses and individuals. Everyone's generosity has been amazing and we wouldn't have managed without all your support. Thank you!

We now also have a small range of clothes available free of charge to those who need them. Please do pop in and ask if there's anything you need.

We have been collecting new and good-as-new toys to distribute locally to those who need them at Christmas.



If you'd like to know more or if there's anything we can help you with, please don't hesitate to get in touch. You can contact us via our Facebook page, our website: www.newhavenbaptistchurch.co.uk or by ringing Jac on 07825 446711.

Seahaven Food Bank, SCDA, Denton Island

Seahaven Food Bank has been responding to a sharp increase in need since the onset of Covid-19. Since May, through the efforts of our hard-working volunteers, we have delivered 3858 parcels to 1861 households. This is a typical average of 85 adults and 72 children per week, nearly three times the number of people being supported pre-Covid. This increase in referrals is likely to continue leading up to Christmas and into the New Year and beyond.

Now more than ever, we are grateful for your continued support through donations and through volunteering, so we can continue to help those most vulnerable in our community. Food can be donated at Londis, High

Street; Sainsbury's Newhaven (and Peacehaven) and Denton Island Community Centre. You can also donate here: www.gofundme.com/f/seahaven-foodbank.



The local Lions very generously allow SCDA to use their minibus for food parcel deliveries

Contact us at foodbank.volunteer@communitysussex.org.uk or call 01273 517250. You can keep up to date by following us on social media @scdafoodbank on Facebook, Instagram and Twitter.



LEWES FOOD PARTNERSHIP

SCDA are pleased to announce the appointment of the Lewes Food Partnership Coordinator, who will be working with local stakeholders to bring a focused approach to addressing food poverty and food security.

This project will be looking at the use of green spaces to produce food; food waste from all aspects of the food chain and bringing stakeholders together to address factors leading to food insecurity. For more information call 01273 517250.



CONNECTING • SUPPORTING • CREATING

The Havens Community Hub has created a Food Cooperative which is currently redistributing over half a ton per week of surplus food supplies from local shops which have reached their 'best before' date helping to prevent food insecurity, landfill waste and greenhouse gases.

Over 250,000 tonnes of food that supermarkets throw away each year in the UK is still edible and the Havens Food Cooperative (HFC) is playing its part to 'feed bellies, not bins'.

Newhaven Town Councillors George Taylor and Steve Saunders are volunteer food collectors, supporting the new scheme and Lewes District Council have donated £750 towards the running costs, enabling the HFC to save and redistribute up to £3,000 worth of food per week in the Havens coastal stretch between Saltdean and Seaford.

Newhaven Town Councillor, Paula Woolven (recently nominated for an award for her charity work), is a founder member of the Hub which has adapted its services and also provides social clubs for older people, home welfare support during the lockdowns and supported the launch of the volunteer driver scheme Havens Community Cars.

The Hub has been recognised on the UK Social Enterprise Roll of Honour for their work supporting people throughout the pandemic. The Roll of Honour was announced at Social Enterprise Futures which took place on the 25th November and saw nearly 1000 attendees come together to celebrate the heroes of the last year.



Havens Community Hub,
2A Thompson Road, Denton, BN9 0RS
W: www.havenscommunityhub.co.uk
E: havenscommunityhub@gmail.com
T: 01273 918226

HIDDEN DISABILITIES

Not all disabilities are visible – some are not immediately obvious.

If you see someone wearing the Hidden Disabilities Sunflower it indicates that they have a hidden disability and may need additional support, help or more time.

Not all disabilities look like this



Assisting adults and children with hidden disabilities

Not all disabilities are visible – some are not immediately obvious, such as autism, chronic pain, dementia, anxiety, visual or hearing impairment. Living with a hidden disability can make daily life more challenging for many people, but it can be difficult for others to recognize, acknowledge or understand the challenges you face.

The Hidden Disabilities Sunflower makes you visible

Wearing the Hidden Disabilities Sunflower discreetly indicates to people around you including staff, colleagues and health professionals that you need additional support, help or a little more time.

How can wearing the Hidden Disabilities Sunflower benefit you?

- People around you, including staff in shops, healthcare, workplaces and public transport may offer you more help
- You or your carer can use your Hidden Disabilities Sunflower to tell people about the additional help you need

If you would like a sunflower lanyard or have any questions, please get in touch:
www.hiddendisabilitiesstore.com

sunflower
lanyard scheme



ST MICHAEL'S 900 YEARS

An update on what's been happening, and what is still to come

ST MICHAEL'S, NEWHAVEN

A BUZZ IN NEWHAVEN!

The town centre was buzzing on a sunny September morning when Familiar Faces Around Newhaven was launched in the town centre as part of St Michael's 900th Anniversary. Many people were seen peering into shop windows to identify the Familiar Faces displayed on easels throughout the town centre. The photo of Steve Brooks holding a link of sausages seemed to win 'favourite portrait'!



ROYAL VISITOR JOINS THE CELEBRATIONS

Princess Anne made history in September 2020 when she visited Newhaven to mark the 900th anniversary of St Michael's Church. Held under strict Covid guidelines with everyone, including Her Royal Highness, wearing masks, it was a day of celebration after months of anniversary events having to be cancelled. She met and chatted to the people of St Michael's and was able to hear about their work both in the church and the community.

One of the high spots of her visit was the chance to hear extracts from Mike Flood's specially composed musical – 900 Years: A Journey Through Time. Before leaving, Her Royal Highness congratulated St Michael's on its 900th anniversary. It was lovely, she said, to be part of such an ancient church history and tradition and yet, in today's world, to find creative ways of using modern technology to sustain services.

ST MICHAEL'S 900 YEARS:

THE STORY OF A CHURCH, A TOWN AND ITS PEOPLE

This beautiful, illustrated book is now on its third printing having sold like hot cakes in the town centre! It's an ideal gift for older members of the community as it is packed full of local history, fond memories and local people. The book will continue to be on sale for a minimum donation of £5 at

Newhaven Pharmacy and the Second-Hand Bookshop over the following weeks, with profits going to the Newhaven Foodbank and St Michael's Church.



BRAZEN SOULS

26th January sees the anniversary of the sinking of HMS Brazen, which was forced onto rocks off the coast of Newhaven in 1800. Sadly, despite valiant efforts to rescue the men, all but one were lost. A memorial to the 105 men who died still stands in the churchyard of St

Michael's and now a short film, Brazen Souls, has been made to commemorate the event as part of the church's 900th anniversary. The film tells the story from the perspective of the captain's young wife, Louisa Hanson (played by Lucy Alexander), and reimagines the events of that fateful night. It was filmed in Newhaven and is set to a piece of music and narration written by local composer Mike Flood. You can find links to the film on the project's Facebook Page www.facebook.com/Newhaven900Years.

COMING UP IN 2021...

A Flower Festival at St Michael's Church, 9th – 11th July.

Open Call Art and Craft Exhibition, 9th – 16th July (contact Carolebuchan20@gmail.com or hilaryamusk@gmail.com) and Social History of St Michael's and Children's Gallery (contact Hilary Musk if you have memories or photos that could be exhibited).

DONATE, VOLUNTEER, BUY - THAT'S THE MOTTO OF RECYCLE!



In our workshop on Denton Island we will take your bicycle related donations and recycle them into road worthy bikes. You can donate bikes or bike parts of any vintage and in any state. We'll stop them from going into landfill and get them back on the road.

The work is undertaken by volunteers and participants, all local people who are part of our Get Socially Active programme and are gaining work experience in the workshop. This will help them get into employment or further training. Our volunteers come from all walks of life. Some are keen experienced cyclists with a wealth of knowledge and others are just keen to help out and learn on the way, all are welcome!

Once we have refurbished the bikes they are then available to buy. We sell the bikes through our shops in Lewes and Newhaven or you can come by the workshop and see what we have in stock. Or if you have an old bike that you want to start riding again, bring it along to the workshop and we'll get you back on the road again.

The workshop is open Tuesday to Friday between 9.30am and 4pm and we are based at the back of Denton Island Community Centre, Denton Island, Newhaven.

Are you looking for work? We can support you to find a job. Contact the SCDA Employability team to see how we can help. Call 01273 516347 or email sddaemployability@sussexcommunity.org.uk.

For more information see our website sussexcommunity.org.uk/work-learning-volunteering/get-socially-active or call Paul on 07796 869496.

NEWHAVEN YOUTH CENTRE IS HERE!

After many years of planning and an exciting few months of construction, the brand new, bespoke Youth Centre is open! The building, designed and built with sustainable and environmentally friendly materials, gives an inclusive open plan space for local young people to enjoy, is spacious and light with landscaped gardens and has a peaceful setting on Denton Island, Newhaven.

Activities include weekly youth clubs, a range of well-being activities including partner organisation i-Rock providing mental health support for 14-25 year olds; one to one support including well-being check ins, sexual health and advocacy and Newhaven Young People's Forum meetings.

For more information call the SCDA youth team on 07796 869421 or email youth@sussexcommunity.org.uk.



SCDA INFO & ADVICE HUB

Got a problem but don't know what to do? Need help with benefits, debt and housing issues?

The Information and Advice Hub is currently closed for face to face drop in sessions but you can still access our Community Navigators.

We can:

- Help you to access information
- Refer you to generalist and specialist advisors about benefits, debt and housing
- Link you in with local services to resolve any problems you may face or improve your health and wellbeing
- Refer you on to our Food Bank

A member of our team will discuss your circumstances with you and there will also be an opportunity to discuss further services and support should you need them.

Phone 01273 516032 or Email enquiries.info@sussexcommunity.org.uk



NEWHAVEN TOWN CRIER

Our Town Crier is a talented chap. He's followed up on his wonderful Cry for the NHS (in the last issue of Newhaven Matters) with a special Christmas cry for Newhaven.

Don't forget that the Town Crier is available for events in the town. Just call the town council on 01273 516100 or email admin@newhaventown-council.gov.uk to enquire about booking him.

A Meeching Christmas Carol

'Tis the night before Christmas,
all is quiet in our town.

From the gun-grey freezing
River Ouse, to the Fort up on
the Downs.

The Earth Galleries at Paradise
Park have finally closed their
doors.

The dinosaurs can now relax,
instead of stomp and roar.

From each church across the
parish can be heard much joy
and song,

And Last Orders have been
called as party revellers
stagger home.

Before The Dockers left their
ground they hung up football
socks.

The heroes of the foodbank
have just dropped off their last
box.

The Cub Scouts have all been
dismissed, promising to do
their best.

The ferry, shops and fishing
fleet have now all come to rest.

'Tis the night before Christmas
in the port town of Newhaven.

Peace descends upon this
place, and love across the
nation.

But something is abroad
tonight, something has been
stirred.

Growing noises from the north
increasingly are heard.

Father Christmas has arrived,
as he has always done,
Bringing fun-filled festive
Christmas cheer, to each and
every-one.

Merry Christmas one and all.

**With love from the
Newhaven Town Crier.**



✓ FREE DELIVERY ON ORDERS OVER £20.

✓ VEGAN OPTIONS AVAILABLE.

✓ GLUTEN FREE OPTIONS AVAILABLE.

✓ 10% DISCOUNT ON ONLINE ORDERS.



**OPEN CHRISTMAS DAY
12-3PM. BOOKING ONLY!**

☎ 01273 513308

🌐 [HTTPS://VICEROYNEWHAVEN.CO.UK](https://www.viceroynewhaven.co.uk)

📍 4 BRIDGE STREET, NEWHAVEN, BN9 9PJ



HARBOUR MEMORIAL BENCH ON CASTLE HILL

It is now 6 years since local sculptor Christian Funnell created a unique bench on Castle Hill, offering local people an opportunity to commemorate loved ones who have died in a beautiful setting.

The semi-circular bench is located between the Fort car park and the Fort itself with magnificent views of the river, the town and the sea towards Tide Mills and Seaford. It is constructed out of a steel mesh filled with field flints, with red painted steel poppies at intervals amongst the flints

as a reference to the 100th anniversary of the First World War. Hard wearing seasoned oak slats are bolted to the frame to form the seat of the bench, and commemorations are etched on stainless steel plaques screwed to each slat.

There are still a few slats available, and we have held the price at £220 per slat. If you would like a commemoration to your loved one to be included on the bench, please contact the town council on 01273 516100 or email admin@newhaventowncouncil.gov.uk.



ADAPTING TO A 'NEW NORMAL'

Despite the trying circumstances Haven Harmonies continues to make its voice heard with the support of our hard core members. We have continued with our very successful Singalong-a-Zoom-a-Rosie which have become more enjoyable as we get used to the unusual format. These very successful evenings are led by Rosie Brown and her husband from the music studio in their house, on a Monday evening 6.45 – 8.00pm. It's a chance

to sing and meet together via the internet. If you would like to join us you will be very welcome. There is a charge of £3, a small price to pay for an hour's entertainment. Alongside that weekly get together, choir members share their own recordings and showcase their many talents via regular emails from our secretary. The enthusiasm is still there, and once we can rehearse face to face again we will be raring to go.

For more info or to join our current activities please contact our secretary via our choir email address haven-harmoniescommunitychoir@gmail.com. Hope to see you on Monday evenings!



Town Council meetings

Normally, members of the public are welcome to attend town council meetings. And they still are – but during the pandemic meetings are being held online. The following meetings are planned for this quarter. Keep an eye on our website for news of each meeting coming up, with the date and time and a link to join via MS Teams.

Tuesday 5th January

Planning & Development Committee.

Tuesday 19th January

Full Council.

Tuesday 26th January

Planning & Development Committee.

Tuesday 2nd February

Regeneration & Strategic Development Committee.

Tuesday 16th February

Planning & Development Committee.

Tuesday 23rd February

Environment & Amenities Committee.

Tuesday 2nd March

Promotion, Partnership & Finance Committee.

Tuesday 9th March

Planning & Development Committee.

Tuesday 16th March

Promotion, Partnership & Finance Committee.

Tuesday 30th March

Planning & Development Committee.

RIVERSIDE PARK

THE HIDDEN GEM OF NEWHAVEN

© Mike Kerry

It is incredible to think that up until its closure in 1981, this beautiful ecologically diverse reserve was a landfill site! Now designated a Site of Nature Conservation Interest (SNCI) it is recolonising and evolving since rehabilitation work commenced in 2005.

There are two hectares of wildlife rich reserve to explore; you will find diverse habitats including ponds, ditches, scrubland, meadows and various tree planting

has taken place over recent years with the Friends having planted over 1000 trees in 2019. Look out for rare wildlife such as Adders, Adonis Blue Butterflies, Lapwings and the Grey Plover.

Excitingly, Newhaven Town Council are soon to take over responsibility for the site and in partnership with the Friends of Riverside and Valley Ponds group have great aspirations to continue to improve the reserve for people and wildlife.

The Friends are always looking for help and support in running the committee and feet on the ground; if this is something you would like to get involved in, please contact lesleyboniface@yahoo.co.uk or check out our facebook www.facebook.com/RiversideParkCommunityVoiceNewhaven/greenhavens.network/committee/

NEWHAVEN TREE WARDENS

At the time of writing we are working on finding dates for scanning sites earmarked for tree planting this year. Like everyone else we are also trying to work out how to do it all in a Covid compliant and safe manner! But all things being equal we should be planting the young DED resistant elms shown in the photograph, these were donated to us as a part of the millennium elms

project and it will be so lovely to have some of these beautiful trees back in town.

We also have an announcement... we are delighted that Rampion Wind have agreed to sponsor us for this year and hopefully into the future. So a huge thankyou to the team at Rampion, we are looking forward to working together on all sorts of projects.

We know it's all been Covid gloom and doom but the Tree Wardens are feeling optimistic and looking forward to some happy planting!



Find us on Facebook
[@BN9TreesNewhavenTreeWardens](https://www.facebook.com/BN9TreesNewhavenTreeWardens)

OurNewhaven Project

Our Newhaven is an easy to use website project set up in 2007 and run by three volunteers. The aim of the project is to build a living history of Newhaven and the surrounding areas through the words and photographs of people who have and do live in the town.



An old photograph of the West Quay

This fine view of the harbour is dated around 1950, a rare view of the West Quay Road from this era. The large buildings in the background were the bonded and sheet loft warehouses; this site is now occupied by a car park and a fish shop. In the far distance are the North Quay cranes, and over to the right, on the Railway Quay are the Marine Workshops, now a grade 2 listed building. The massive three-legged sheerlegs lifting gear are standing proud, but were eventually surplus to requirements and were felled at dawn in August 1965. Pictures of this felling can be viewed on the website. This section of the West Quay was regenerated from December 2000 and completed in July 2003. Additional pictures of this area from other years can also be viewed on the OurNewhaven website.

You can contribute online at www.ournewhaven.org.uk or write your memories down and leave your photographs, postcards, slides or negatives for Our Newhaven, c/o Newhaven Town Council Offices, 18 Fort Road, Newhaven. We will return your images.



La Baguette Shop

For freshly baked genuine French Bread, continental and traditional sweet and savoury pastries, delicious home-made soup and snacks.

Open Monday to Saturday
31 High Street Newhaven • 01273 516129



Struggling to balance your books?

Contact Tasker Osman & Co on 01273 512749 to arrange a **FREE** no obligation meeting with one of our team to see how we can help



Tasker Osman & Co.
Financial Accountants

Website: www.taskerosman.co.uk
Phone: 01273 512749
Email: jon@taskerosman.co.uk
Address: 10 South Way, Newhaven
East Sussex, BN9 9LL

Partners: Kevin Osman FFA/FIPA, FAIA, FFTA, Jon Sanders FFA/FIPA, FMAAT, FFTA



NEWHAVEN TOWN DEAL – EXCITING NEWS FOR ALL!

Lewes District Council have shared exciting news about regeneration prospects for our town. Newhaven has been chosen as the place for which ambitious plans are being developed to improve public areas, community facilities and transform the town's economic growth prospects by securing up to £25m of Government funding from the Towns Fund.

Residents' views already expressed in earlier consultations including the Newhaven Neighbourhood Plan, the #MyTown campaign and the recent residents' survey advertised in mid-November, are informing the prioritisation of projects.

The District Council have provided information on the seven project themes as follows:

1. Re-imagining Our Town Centre

The Town Centre faces many challenges which include the physical barrier the ring road presents and a considerable number of empty units.

Towns Fund investment is being sought to complement wider regeneration plans for the town centre by providing employment opportunities and community facilities.

Meanwhile, Lewes District Council are also waiting to hear if they have been successful in their £7.2 million bid to Government's 'Future High Streets Fund' to help transform Newhaven Town Centre and High Street by creating spaces that will attract people to the area.

2. Re-connecting Our Town

The ring road and A259 have a negative impact on the town for pedestrians and road users and a long-term ambition is to divert excessive vehicular traffic away from Newhaven town centre.

However, this would require the construction of new roads in the South Downs National Park and cost much more than would be available from the Towns Fund.

Instead the focus will be on investment to reduce traffic volume, encourage walking and cycling, reduce impact of the current road system and improve connections within the town.

3. Better Journeys for All

A proposal to invest in a first-rate bus service with a fleet fuelled by hydrogen is being considered. As well as being a more sustainable means of travel for many residents, proposed maintenance facilities would also supply jobs and training opportunities in an innovative sector. Significant improvements to bus stops and shelters have also been proposed.

4. Building Our Economic Strength

Newhaven is already somewhere residents are proud to live, work and welcome visitors to, but it has the potential to be even better. It is the intention to bid for funding which can enable significant investment into a range of commercial sites in the industrial, social enterprise, marine and visitor sectors of the economy to create employment and enable the development of skills.

5. Maintaining Maritime Vitality

Newhaven Port is a key strategic trade and travel gateway to and from the continent. To help sustain it for the future, our waterside location should be capitalised on and land unlocked for maritime-related employment development.



6. Destination Newhaven

The repair and restoration of Newhaven Fort is being considered as a project, which would increase visitor spend and safeguard this important heritage asset.

Already £500k of Towns Fund has already been given for Newhaven to develop a new café, cycle hub and information point on land at Railway Quay, next to the UTC and this new attraction is planned for completion by Easter 2021 (a date for your diaries!).

The former UTC building by the river will also be coming back into use with confirmed Government funding paying for its conversion to offer a range of training, commercial space and public services.



7. An Active Community

It is intended to invest in key recreation spaces across the town, specifically on Fort Road and Eastside Recreation Grounds as well as sites which will provide facilities and access for use of the river for leisure.



There is much to be hopeful for and Newhaven seems to be the place to be with all these worthwhile projects.

In a joint statement, Chris Ketley, the Chair of the Newhaven Town Deal Board, Maria Caulfield MP and James MacCleary, Leader of Lewes District Council have said:

'This is such an exciting time for Newhaven with the Towns Fund viewed as a genuine means of achieving many longstanding ambitions. Should our bid be successful, it will build upon the exciting investment Newhaven has seen due to its Enterprise Zone designation. The regeneration of Newhaven is vital for our community and the Towns Fund Board has been working together to ensure this is the case.'

For more information on the Towns Fund please go to: www.lewes-eastbourne.gov.uk/regeneration/newhaven-town-deal.



Phil Rose and members of LYT Productions

TIDE MILLS

A LIVING HISTORY

LYT Productions, directed by Phil Rose, are currently working on a major creative heritage enterprise. They are collaborating with highly regarded professional artists, designers, sculptors, poets, musicians and writers – and there are many opportunities for schools, colleges, young people, families and retirees in the community to get involved, learn from the professionals and share their talents. The project will culminate in a celebratory week which will run from 20 – 25 September 2021. The event will be free and accessible to all. Tide Mills will be brought back to life through imaginative installations, digital arts, animations, constructions,

soundscapes, performances, workshops for all ages and guided tours.

Although a quiet wildlife sanctuary now, Tide Mills was once a hive of industry. Ruins of an old village, mill and hospital are still visible and one can imagine past lives, before it was deserted. Stables for retired racehorses were once on the site, as was an early radio station and a seaplane station.

Phil Rose, who founded LYT Productions 12 years ago, has over 30 years' experience in the entertainment industry and creates inclusive environments where young people can safely learn practical, transferable skills with the support and mentoring of industry professionals. This is his most ambitious project to date.



▲ Illustration of a seaplane pilot by LYT Productions member, Iggi Goddard

Look out for more news about the history of Tide Mills and the ways in which you can get involved with the project.

The Tide Mills Project, devised and delivered by LYT Productions, is funded by the National Lottery Heritage Fund, Arts Council England and the South Downs National Park. Visit www.tidemillsproject.uk to find out more, join the mailing list and get involved.

NEWHAVEN DAY CLUB

The photo shows a cosy, refurbished Main Hall of Newhaven Day Club which was carried out before the lockdown in March. At present it is spaced out in accordance with guidelines received from the Government.

The over 50s club moved into its present premises in West Quay (behind the Ark pub) in 1995. It has facilities for

the disabled and is run by volunteers and a committee. The club is normally open on Tuesdays, Thursdays 10am to 4pm and Fridays 10am to 2pm, when everyone enjoys a home-cooked lunch together.

Tuesdays and Thursdays are coffee or tea mornings and snooker. In the afternoons you can join in with activities such as bingo, craft, racing, quizzes, games, art and hoiy (bingo with cards).



If you are interested in coming along to meet old friends or make new ones, please contact Tony on 01273 513189.



NEWHAVEN HISTORICAL SOCIETY

THE 'ARK HOUSE'

The 'Boat House' or 'Ark House' was built on the hulk of an old barge, sited between the south-western side of Sleepers Hole and Fort Road, now the yacht harbour. The old barge must have been floated in on a very high spring tide to have got to where it was. The Ark House was constructed in Victorian times, on a barge brought from Rye in 1813.

The Ark House was made up of two cottages. In the 1930's a sweet shop was built between the cottages and one of the large rooms converted to a tea room.

Mrs Gladys Slater remembers:

"My parents Mr and Mrs H. T. Colwell and myself moved into what was then known as the Ark Cottages around 1933, after Mr and Mrs F. Kennard moved out. There were three rooms in each cottage – one large room which was in the hull and one large room which ran the width of the barge, a kitchen-cum-living room and a small passage. It was lit by oil lamps. My father built the sweet shop between the two cottages in what was a garden. My mother opened the large room as a tea room. After Mr Kennard Snr. left, we took over both cottages, installing gas and water. Until then all water had to be brought in from an outside tap. I feel there are many people in Newhaven who at some time or other called at the Ark House for either a cup of tea or sweets or ice cream on their way to the beach or recreation ground. We lived there until the late 1940's."

Sussex Express 28th Feb. 1969

The Ark House features in a biographical novel by Cecile Woodford based on her Victorian Grandmother, Caroline Water's diary, 'Yesterday, Today and Forever'.

"Caroline lived in the Old Ark House, Newhaven, next to the smugglers' hideout of Newhaven Fort and ran a surgery of folk cures from her home. She used some unorthodox cures for villagers during typhoid epidemics and outbreaks of foot and mouth. She was also the local midwife."

**Eastbourne Gazette
21st Dec. 1982**

The Ark House was demolished in the late 1940's.

If you have any memories or stories to tell about the Ark House please contact Newhaven Historical Society.



Photograph Newhaven Museum A024P055

The photograph above shows a view of 'Sleepers Hole', pre-WW1. The Ark House is in the centre of the photograph; right foreground are fort buildings – Master Gunner's house. Note the rail track to the breakwater on reclaimed raised land. The recreation ground is on the left of the photograph. Huggett's field can be seen in the background, note the football goalposts and swings. Floating in the bay are a number of piles (sleepers) pickling in the salt water, hence the name 'Sleepers Hole'.



Photograph Newhaven Museum A024P054

The photograph above was taken in 1930's. Here the Ark House is a tea house as well as a residence.

PHOTO COMPETITION WINNERS

The Best of Newhaven Photographic Competition proved to be a great success once again this year with 134 entries. The judging was carried out anonymously and as always

it was very difficult to choose the winners with so many wonderful entries.

Normally a presentation evening would be held but due to the pandemic it wasn't possible this year. However, shields were given to the overall winner, Kayla Rookley and the under 12's winner Evie Elizabeth Novell-

Smith with certificates and their prize money. All other winners were notified and received their cheques and certificates by post.

Here are the winning photos, which you can also see on banners along West Quay.

Thank you to everyone who took part this year and congratulations to all those who won!



▲ Buildings winner - Martin Sinnock



▲ Events winner - David Payne



▲ Fun winner - Martin Sinnock



▲ Cliffs and beaches winner - Paul Trunfull



▲ Green spaces winner - Hilary Musk



▲ River and port winner - Thomas Pateman



▲ Weather winner - Paul Trunfull



▲ Under 12's winner - Evie Elizabeth Novell-Smith



▲ Work winner - Paul Trunfull



▲ Wildlife winner - Rosemary Enstone



▲ Overall winner - Kayla Rookley



Remembrance Sunday 8th November 2020

Whilst Remembrance Sunday this year was not what the town and its residents have come to expect due to COVID, nevertheless people turned out to pay their respects alongside the town council's official commemoration of this nationally important day.

A low-key approach was adopted this year, with a short socially distanced service and the laying of wreaths by the Mayor, Deputy Mayor, our local MP Maria Caufield and Lewes District Councillor Julie Carr at the Memorial Green.

Newhaven's Young Mayor, Ted Packham (pictured above/right) wearing his Young Mayor badge), held his own personal

commemorations outside his home, by reading a poem and laying a poppy wreath with his brother.

Looking to the future, we are all hoping that 2021 will allow Remembrance Sunday in Newhaven to be once more marked with the usual fully inclusive event we are all accustomed to.

NEWHAVEN WELLBEING CENTRE - continuing to offer support throughout COVID19

The Centre has been temporarily closed since March, following advice and guidance from the Government. The Centre Co-ordinator tells us how they have adapted and continued to provide their services.



East Sussex Community Network
Wellbeing Centre (Newhaven)

Throughout the pandemic, we have continued to support the mental health of our clients through telephone contact and using online 'virtual' technology. The feedback we have received from clients and services about how we have adapted our service offer during this time has been really positive.

We continue to offer telephone support and now offer a 'virtual' timetable that is open to clients who are registered with any one of our seven Wellbeing Centres

across the East Sussex Community Network. This includes yoga, peer support and quizzes. Currently, we are in the planning stages of reintroducing small indoor and outdoor groups specifically aimed at clients who are isolated or whose mental health has deteriorated.

All face to face support will be planned with careful consideration of government restrictions and guidelines with mitigation put in place to ensure the environment is safe for both staff and clients.

We have an active Facebook page called 'Southdown Newhaven Wellbeing Centre' (it has a Newhaven beach image) where we post updates regularly and pass on local

information and wellbeing tools and tips.

We are still taking new referrals and there is a downloadable referral form on the Southdown website. Go to www.southdown.org/WellbeingCentresESCN - the form is in the 'Downloads' section at the bottom of the page.

Please call 01273 517641 or email us at newhavenwellbeingcentre@southdown.org for further information or if you would like a referral form to be emailed or posted.

Stay safe everyone and we look forward to hearing from you.

The Newhaven Wellbeing Centre team.

NEWHAVEN'S 'WOOD-WIDE WEB'

*Steven Teale – Friends of Castle Hill LNR
and Advisor to the Greenhavens Network*

Many trees have been planted around Newhaven in recent years, particularly by the town's Tree Wardens and local Councils. These lines of trees act as corridors linking existing trees in hotspots such as at Bollen's Bush, Meeching Down and the 'old-town' area around St Michael's Church, where some of the town's relatively few mature oaks, elms and beeches are found.

It can be a challenge at this time of year to look at a leafless tree and appreciate how much life it holds and how much other wildlife depends upon it. In its winter dormancy we might imagine how it lives life in the slow lane, so much slower than we humans as we speed towards Christmas. A spruce in Sweden is believed to be more than 9,500 years old. That is equivalent to 115 human lifetimes laid end-to-end. It is understandable that we might struggle to fully understand the value of something that exists at such a different pace of life from us.

But trees have needs. Like us they need sunlight, water and nutrition, somewhere to live and a little space. But what about social needs? Peter Wohlleben, a German ecologist and forester, has spent years studying trees. Peter taught me that trees are social organisms that communicate with each other in astonishing ways. Trees send electrical impulses through their intertwined roots, but at a super slow-mo speed of about 8mm per second. That's about 29 metres an hour. Humans do the same but at up to 270 miles an hour! Trees feed and nourish each other through their tangled roots and shared networks of mycorrhizal fungi. They warn of danger: a tree responds by producing chemicals when it senses its leaves being eaten to warn neighbouring trees of the imminent danger. Those trees produce toxins which

make the leaves unpalatable. When leaf-eating insects attack a tree, chemical compounds are produced attracting predators of the leaf-eating insects. This requires the ability to recognise which insect is attacking it in order to attract the appropriate predator, and trees do this by 'tasting' and recognising the saliva of its attacker. Few of us might be ready to accept that trees are sentient organisms, but Peter presents a compelling argument.

There is little disagreement though that trees are special and worth conserving. The recent felling of the 250 year-old Cubbington Pear for the HS2 rail line caused much grief. Newhaven is not a stranger to the sadness caused by the loss of special trees. A magnificent veteran Huntingdon Elm which stood at the former Grays School in Brooks Close, shading generations of schoolchildren, myself included, was felled sometime before the December 2017 fire that destroyed the school.

Trees have long been intrinsically valued, but something occurred towards the end of the last century which appears to have kindled a renewed sense of collective awareness. The devastation wrought by the 1987 gale and the 1992 Rio Earth Summit and its images of catastrophic rainforest clearances for palm-oil plantations are two likely reasons.

The Woodland Trust's Ancient Tree Inventory lists only two special trees in Newhaven, and one of those is the lost Huntingdon Elm. Efforts are underway to discover and record any that might be worthy of Notable, Veteran or Ancient status and for inclusion in the Inventory. One candidate was recently found at Meeching Down – a huge Wild Cherry (*Prunus arvensis*) which was probably blown over in 1987, but has continued to grow upwards. A true phoenix of the woods, no doubt sustained by the embrace of neighbouring trees.



Sick or injured wildlife – call East Sussex Wildlife Rescue and Ambulance Service
07815 078234 • www.wildlifeambulance.org

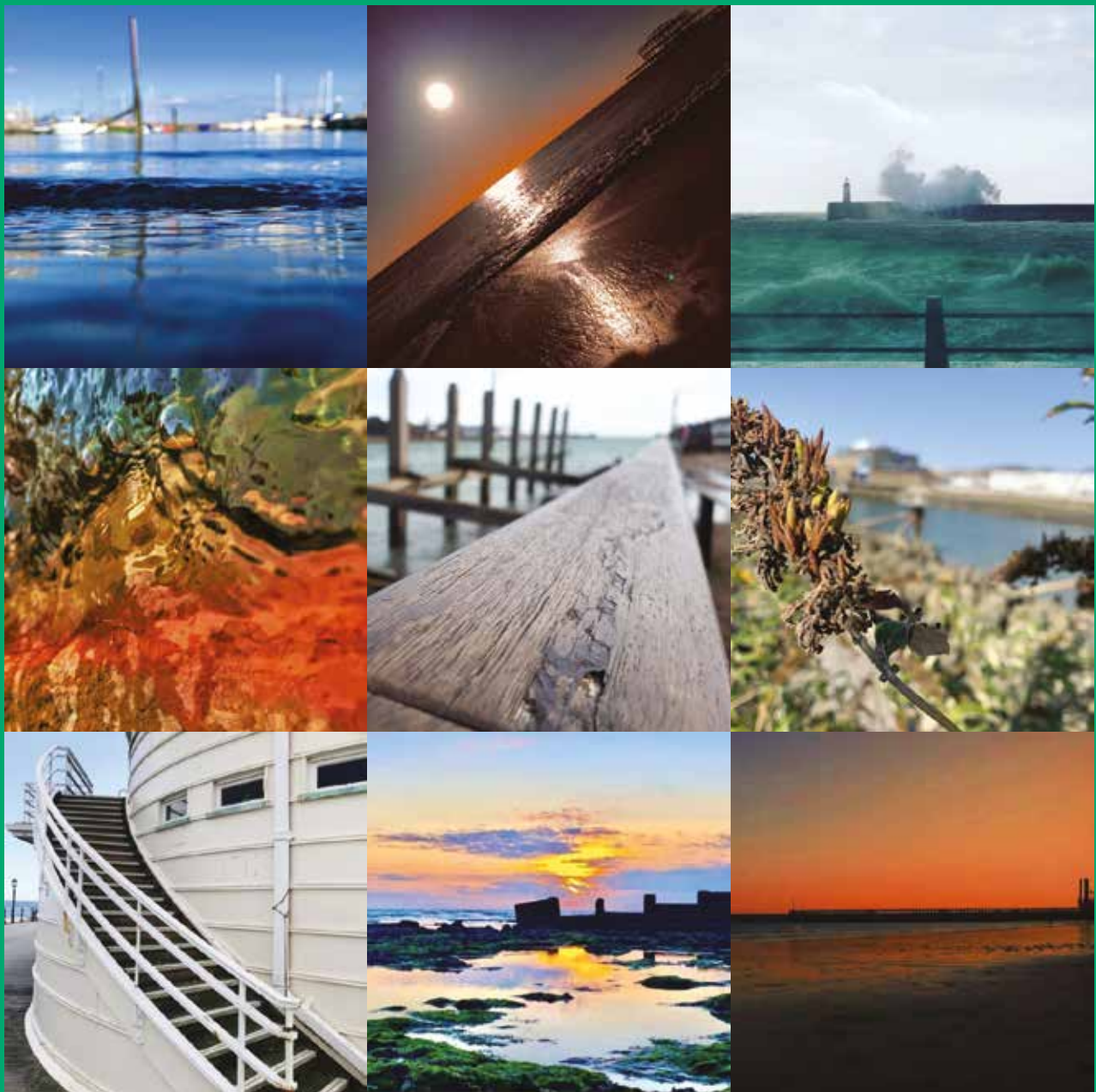
YOUNG PHOTOGRAPHERS AT SEAHAVEN ACADEMY

The Year 10 Photography students at Seahaven Academy have been looking at Harbour and the Elements. This includes observing and capturing aspects such as texture, focus, line and colour. We have been looking

at different areas where we can take photographs of the harbour and coastal scenes, which has mainly focused on Newhaven and Peacehaven as well as Brighton and Worthing. This means we have a variety of different locations to choose

from. It has been a rewarding and interesting project and fantastic to see the range of outcomes.

**Millie Weir and
Charlotte Christensen**



HELP KEEP THE WHEELS TURNING AT COMMUNITY TRANSPORT FOR THE LEWES AREA

Normally CTLA delivers more than 80,000 passenger-journeys a year to those in the community who have difficulty getting out and about. Covid has interrupted that, but many still rely on us for home food or medicines deliveries or to take them to medical appointments, especially where they do not have friends and families to help.

You can help. When ordering with Amazon please shop via Amazon Smile and select Community Transport for the Lewes Area - CTLA as your chosen charity. Alternatively support can be shown by using the Easy Fundraising search engine when you shop online, over 4,300 sites will donate to

CTLA as your chosen charity and it won't cost you a penny, so please sign up now!

Joining our CTLA 100 club monthly draw is another fantastic way to show your support and maybe scoop a cash prize too!

If you or someone you know needs our help or you can spare a few hours to volunteer, speak to us today on 01273 517332 or fill out and submit our contact form on the web at www.ctla.org.uk.



CTLA's Nikki getting vital home food and medicine deliveries to our members.



GRANTS FOR LOCAL ORGANISATIONS

Did you know that Newhaven Town Council gives grants to local organisations?

Twice a year, in February and October applications are invited from clubs, societies and organisations whose activities benefit the people of Newhaven.

Grants made recently include £3000 to the Affinity Rowing Club towards a floating pontoon; £500 to Just Friends, an established charitable society for older people starting a branch in Newhaven; £500 to the Rotary Club of Newhaven to enable them to provide food hampers at Christmas for elderly and vulnerable residents; £594 to Denton Cricket Club towards the purchase of high ball stop netting, a health and safety measure, and £297 to Newhaven Day Club towards

the replacement of their central heating boiler.

There is another chance for local organisations to apply for grants in the New Year. Application forms will be available on the town council website www.newhaventowncouncil.gov.uk news in January. The deadline for applications will be mid-February 2021.

Pictured: Newhaven Baptist Church who received a grant in a previous round of grant aid towards projects at Christmas.

Lewes District Citizens Advice

Seven things to check if you're at risk of redundancy



1. Check if your redundancy is fair. There are rules to protect you from being discriminated against, and for being unfairly picked for redundancy. See www.citizensadvice.org.uk/work/leaving-a-job/redundancy/check-if-your-redundancy-is-fair/ for more information.
2. Check how much redundancy pay you get. You're entitled to statutory redundancy pay, which is the minimum the law says you're entitled to, if you've been an employee for two years.
3. Furloughed? Make sure you get 100% redundancy pay. If you were furloughed and then made redundant, your redundancy pay should be based on your normal wage.
4. Check your notice period. If you've worked for your employer for at least a month you're entitled to a paid statutory notice period.
5. Check your holiday pay. You'll be paid for any holiday you have left over when you leave.
6. You might be entitled to paid time off to look for work. If you've worked for your employer for two years at the end of your notice period, you're likely to be entitled to 'reasonable' time off to apply for jobs or go on training.
7. Check if you've got legal help via your home insurance. Often people get 'legal expenses cover' as part of their home insurance package, but many don't realise they can get free legal help to challenge their redundancy.

You can visit Citizens Advice's pages www.citizensadvice.org.uk/work/leaving-a-job/ for further information and advice.



Citizens Advice Helplines

- **Adviceline** call 03444 111 444. Monday- Friday 9am - 5pm.
- **Email advice** www.eastsussexcab.co.uk
- **Chat online** to an advisor on our website citizensadvice.org.uk/contact-us.
- **Consumer Helpline** on 0808 223 1133
- **Universal Credit Help** to Claim line 0800 1448444.

EU CITIZENS MUST APPLY TO THE EU SETTLEMENT SCHEME (EUSS) BEFORE 30 JUNE 2021

If you are from the EU, or from Switzerland, Norway, Iceland or Liechtenstein and you want to continue living and working in the UK, you should apply to the EU Settlement Scheme.

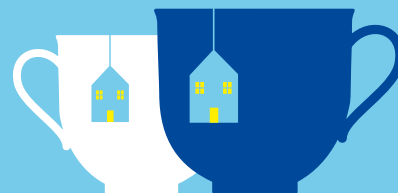
If you have EU family, friends, neighbours or colleagues, please tell them about the scheme, which is free to apply for.

Apply online at www.gov.uk/settled-status-eu-citizens-families.

Or call the EU Settlement Resolution Centre 0300 123 7379 if you need help.

The scheme guidance is available in different European languages at www.gov.uk/guidance/settled-status-for-eu-citizens-and-their-families-translations.

EU CITIZENS LIVING IN THE UK PROTECT YOUR RIGHTS BY APPLYING TO THE EU SETTLEMENT SCHEME



The EU Settlement Scheme protects the rights you currently have in the UK including access to healthcare, benefits and pensions.

Find out more and apply at:
gov.uk/eusettlementscheme

Irish citizens or those with valid indefinite leave don't need to apply

HM Government

What's On.

1st January – 31st March 2021... subject to Covid-19

HILLCREST CINEMA

Please come back to the cinema in 2021 as your ticket goes directly to helping the Hillcrest with its running costs and the Hillcrest is going to need your ongoing presence and support in these trying times ahead. We look forward to seeing you in 2021 with another line up of interesting viewing!

KNIT AND NATTER



Like many groups, the Knit and Natter group met twice but had to stop again. They normally meet at the Hillcrest Centre on Mondays from 2-4pm but will not be starting again until legislation permits.

THE FRIENDS OF TIDE MILLS

The Friends of Tide Mills meetings are (at the time of writing) suspended but the group hopes to recommence from December and then as normal from January onwards.

NEWHAVEN TWINNING ASSOCIATION



When restrictions end, Newhaven Twinning Association meet every Sunday morning from 10.30 to 12.30pm (weather permitting) to play Petanque (French Boules) sessions at West Quay Petanque pitch (opposite the Hope Inn).

Also planned are:

- Virtual Quizzes on Fridays 29th January and 26th February, 7pm start.
Contact alison.thomas54@outlook.com.
- Mini Market and Easter Egg Tombola on Saturday 20th March at Meridian Hall, Peacehaven.
Contact norman.hopson@btinternet.com.

QUALIFIED REIKI & SOUND HEALERS



Mike & Janet Bond hope to provide their yoga classes and healing sound baths again early in 2021. Call 01273 512306 or email samtosha4u@btinternet.com.

DENTON WOMEN'S FELLOWSHIP

Denton Women's Fellowship has plans for talks by Ian Everest on 23rd February and the Co-op "Tax, Care and Toyboys" on 23rd March. Contact: Ann Saunders 01273 514482, email pip39pip@gmail.com.

NEWHAVEN YOUTH FOR CHRIST (YFC)

Newhaven Youth for Christ (YFC) is a Christian youth organisation working in the town to provide open youth clubs, detached youth work, one to one mentoring and support to young people. During the November lockdown the youth work went online. At the time of writing, we are unsure what youth work will be operating in January, so please check website newhavenyfc.org or get in touch with Centre Director Sara Alexander on 07763 333998 for more information.

MEECHING WI

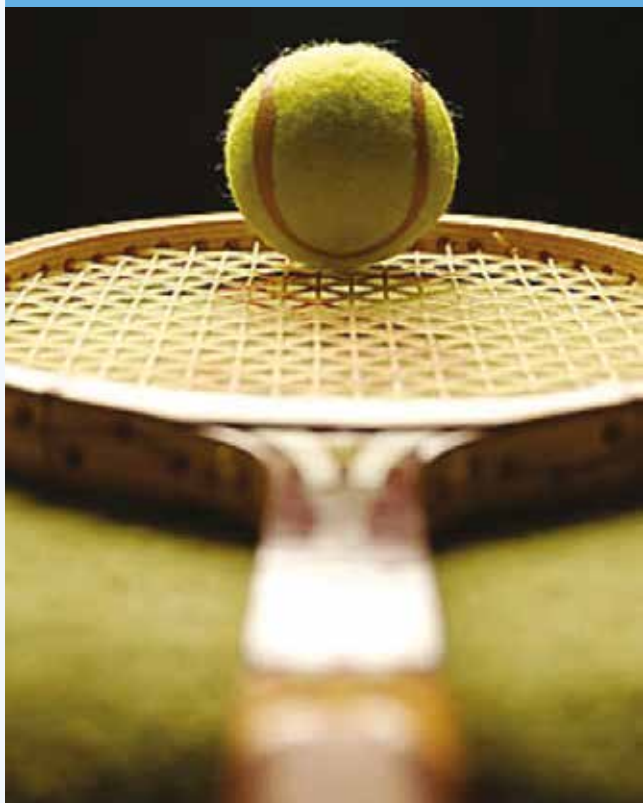


Meeching WI normally meets on 3rd Thursday of the month at Meeching Hall, Fort Rd. Contact 01323 890122.

NEWHAVEN & PEACEHAVEN U3A

Newhaven & Peacehaven U3A have kept in touch with each other by phone, Zoom and newsletter. If you are interested in joining U3A, contact Sharon on 01273 589953.

NEWHAVEN TENNIS CLUB



Newhaven Tennis Club offers the following sessions and activities throughout the winter to members and non-members (who are considering becoming members); guest fees £5.00. Please contact Bob: 01273 512162 or Clive: 07526 267560, or email: mailrkjackson@yahoo.co.uk.

Every Saturday

Junior group coaching sessions 9.00am – 12.00pm.

Every Saturday

Adult sessions 1.00 – 5.00pm.

Every Sunday

Mix of adult and junior coaching: 10.00am – 2.00pm.

Every Tuesday

Adult club sessions 1.00pm – 4.00pm.

Club Members can use the courts any day of the week during daylight hours. New members welcome; very competitive adult fees and very low children's fees (annual costs £2.00-£5.00 depending on age) extended into autumn/winter.

NIPPERS



NIPPERS at East Side Social Centre
(nippers1973@outlook.com):

After school club 4th January to 12th February; 3pm – 6pm daily, collections from local schools.

Holiday play scheme 15th to 29th February; 7.30am – 6pm daily, various sessions available.

After school club 22nd February to 31st March; 3pm – 6pm daily, collection from local schools.

NEWHAVEN HISTORICAL SOCIETY



Newhaven Historical Society has received a substantial amount under the Government's Grant Funding Scheme and been able to employ local firms to completely refurbish the reception area of the museum; this has made it much more welcoming for visitors and a better environment for our dedicated volunteer stewards to work in. We also plan to purchase some new museum standard display cases and refresh our exhibits for the 2021 season, hopefully reopening early April 2021.

Check website: www.newhavenhistoricalsociety.org.uk or www.facebook.com/museuminnewhaven for up to date news.

We always need volunteers to act as museum stewards and to help with preparing displays, undertaking research and sorting archives. If you have an interest in local history and some time to spare please contact us – details are on our website.

Londis

Newhaven

We're really proud of the products and services we offer and place our town at the heart of everything we do!

Let's Celebrate
CHRISTMAS
Together!

2^{FOR}
£12



**1/2
PRICE**

£1.49
£2.99

300g, 170g



Offers available until 03/01/2021 **drinkaware**



Londis Newhaven
46 High Street
Newhaven
BN9 9PD

Monday -Saturday
7am-11pm.
Sunday
8am-10pm.
Open Christmas Day