



Newhaven *Matters*

Autumn 2021 // Issue N° 31

© Martin Sinnock



Welcome to the Autumn edition of *Newhaven Matters*, the free newsletter for Newhaven residents produced by Newhaven Town Council.





Contact your local Town Councillor

DENTON WARD



Bill Giles
t: 07720 399189
e: Cllr.Bill.Giles@
newhaventowncouncil.gov.uk



Charlie Carr
t: 07952 525079
e: Cllr.Charlie.Carr@
newhaventowncouncil.gov.uk



Angela Simmons
t: 01273 515189
e: Cllr.Angela.Simmons@
newhaventowncouncil.gov.uk



George Taylor
t: 07479 077776
e: Cllr.George.Taylor@
newhaventowncouncil.gov.uk



Viki Lees Martin
t: 07943 696244
e: Cllr.Viki.Leesmartin@
newhaventowncouncil.gov.uk

NORTH WARD



Steve Saunders
t: 07976 371116
e: Cllr.Steve.Saunders
@newhaventowncouncil.gov.uk



Lesley Boniface
t: 07979 763281
e: Cllr.Lesley.Boniface@
newhaventowncouncil.gov.uk



Paula Woolven
t: 07710 426 321
e: Cllr.Paula.Woolven@
newhaventowncouncil.gov.uk

CENTRAL WARD



Christoph von Kurthy
t: 01273 514540
e: Cllr.Christoph.vonKurthy@
newhaventowncouncil.gov.uk



Paul Boswell
t: 01273 515566
e: Cllr.Paul.Boswell@
newhaventowncouncil.gov.uk

SOUTH WARD



Graham Amy
t: 01273 514942
e: Cllr.Graham.Amy@
newhaventowncouncil.gov.uk



Kim Bishop
t: 07793 358790
e: Cllr.Kim.Bishop@
newhaventowncouncil.gov.uk



James MacCleary
t: 01273 514452
e: Cllr.James.MacCleary@
newhaventowncouncil.gov.uk



Joe Emery
t: 07735 061165
e: Cllr.Joe.Emery@
newhaventowncouncil.gov.uk



Marlene Amy
t: 01273 514942
e: Cllr.Marlene.Amy@
newhaventowncouncil.gov.uk



Sean Macleod
t: 07780 944934
e: Cllr.Sean.Macleod@
newhaventowncouncil.gov.uk



Heather Pinky McLean
t: c/o 01273 516100
e: Cllr.Pinky.McLean@
newhaventowncouncil.gov.uk



Julie Carr
t: 07757 722927
e: Cllr.Julie.Carr@
newhaventowncouncil.gov.uk

AUTUMN 2021



Hello everyone, I hope you've all managed to enjoy what summer we have had. There's certainly been plenty for the children to do with football summer schools, art workshops and performing arts among the usual summer holiday provision. Of course, not forgetting our older residents we now have a new social group with the launch of Just Friends this month. Founder and Chair, Frederick talks about it later in this edition.

By the time you read this the new Youth Centre on Denton

Island will have been officially launched and having visited briefly earlier in the year I'm sure it's going to be a great asset for the younger members of our community.

The weather behaved on the occasions we needed it to including the Nippers Fun Day, the Gin & Fizz event and the Dieppe Raid commemorations. I was extremely sad not to visit Dieppe again this year but hopefully next year we will join the 80th Anniversary event and I'm sure plans are already being made for the event in Newhaven.

I was very pleased that the Town Fund was finally announced, although slightly under the £25 million that was proposed I'm sure the £19.3 million will make improvements to the town in years to come. West Beach promenade is looking great with the new

Lobster Shack and shellfish outlets and fingers crossed for funding to improve it even more in future.

I've been very busy attending events and launches and on Monday 23rd August I held my first fundraising event in aid of the Nebula. If you run a community group or charity in Newhaven and would like help with raising funds please get in touch via email.

I'm delighted to see that the Fishermen's Memorial Fund is doing so well. The families, supported by Maria Caulfield, have been working very hard with various fundraising activities which I'm happy to be supporting. There is a lovely 2022 calendar available which has images of our harbour, all proceeds will be going to the fund.

Lesley Boniface
Town Mayor of Newhaven

If you would like to advertise, have a story you would like included in future issues, or an event you would like included in the What's On section, please email Nicky Still nicky.still@newhaventowncouncil.gov.uk or phone her on 01273 516100.

Contents

Grants Available for Local Organisations	04	Fishermen's Memorial	15
Newhaven Cemetery	04	Haven Harmonies	15
Town Council Meetings	04	Mayor's Charity Cake Sale	15
Just Friends	05	Newhaven Tree Wardens	16
Older People's Day	05	Poet-tree	16
Head of the Ouse Regatta	06	Looking After Your Property	17
Coat of Hopes	07	Wind In The Willows	17
SCDA News	08	Newhaven Art Club	18
Remembrance Sunday	09	Brewhaven	19
Wilder Gardens	10	Newhaven & Peacehaven u3a	19
Super Seedy Saturday	10	Rotary Club	20
Yoga	11	Opening of Sidings	20
Newhaven Historical Society	12	Newhaven Green Centre	21
Citizens Advice	13	Re-Cycle Project	21
Our Newhaven	14	What's on	21
The Village to Raise a Child project	14		



A scene from this year's Denton Community Challenge



Town Council meetings

Members of the public are once again welcome to attend town council meetings in person. The following meetings are planned for this quarter. Keep an eye on our website for news of each meeting coming up, with the date and time and a link to join via MS Teams if you would prefer to attend online.

Tuesday 12th October
Full Council.

Tuesday 26th October
Planning & Development Committee followed by Regeneration & Strategic Development Committee.

Tuesday 9th November
Promotion, Partnership & Finance Committee.

Tuesday 23rd November
Planning & Development Committee followed by Environment & Amenities Committee.

Tuesday 14th December
Planning & Development Committee followed by Promotion, Partnership & Finance Committee.

GRANTS AVAILABLE FOR LOCAL ORGANISATIONS

Funding will shortly be available from the town council's annual small grants scheme. Local voluntary organisations are invited to apply for funding for any project or scheme which will benefit Newhaven people. There are two tiers – small grants of up to £500 and large grants of £501 - £3000.

Some of the grants given so far this year include:

- £500 to Denton Community Challenge towards a family fun day for the whole community.
- £500 to Newhaven Baptist Church towards equipment for running their foodbank in the town.
- £328 to N.I.P.P.E.R.S. to provide summer sessions

for children to assist in their 'Super Star' programme.

- £240 to Our Newhaven for their web hosting costs
- £3000 to Sailhaven CIC towards their overall project costs of £16000 to renovate a yacht donated to the association to facilitate the provision of sailing to the youth of the town.

Application forms and further details about the scheme are on the news page of the Town Council's website www.newhaventowncouncil.gov.uk. Alternatively, you can email us at admin@newhaventowncouncil.gov.uk or call 01273 516100. The deadline for applications is Sunday 24th October 2021.

NEWHAVEN CEMETERY

Many local residents are familiar with the cemetery along Lewes Road which is owned and maintained by the town council. However, you may not have been aware of the regulations governing its use.

For example, did you know that you need a permit to place a memorial of any kind on a grave or cremated remains plot? Or that you can't place a memorial until 18 months after a burial? This is because some subsidence is to be

expected and it takes time for the ground to settle. Reputable stonemasons are aware of the common pitfalls and will advise you, ensuring that your chosen memorial is safely constructed and installed to comply with industry standards. The council also recommends that you purchase insurance for your memorial.

For a full set of the regulations governing use of the cemetery, visit www.newhaventowncouncil.gov.uk/town-council-services/newhaven-cemetery.

You can also call or email the town council for help and advice at any time.



JUST FRIENDS

*Founder and Chairman
Frederick tells us about a new
branch of the charity that has
just opened in Newhaven.*

Just Friends is an Independent Constituted Charity and the Trustees are dedicated to "help combat the effects of loneliness". Membership is open to anyone living alone, including carers, and we are not looking for romance, a partner or a relationship - Just Friends. We are proud to say there is NO membership fee, NO age limit and NO expectation.

We successfully held our launch meeting in Newhaven on 9th August and the response has started a new branch in Newhaven that will serve as a hub to include Seaford and Peacehaven. We were delighted to welcome the Mayor to our launch meeting and were so pleased with the support received. Branches



have a designated day of the week and Newhaven's is Monday. Being a member also entitles you to visit and enjoy other branches in Eastbourne, who meet on a Tuesday, and Bexhill who meet on a Friday.

Newhaven is meeting on the first and third Monday of the month at Elim Hall, Meeching Rise, from 10am until noon. Apart from our Monday activities we will be organising some events along the lines that have been enjoyed by the other branches such as tea parties, steam train visits, lunches, coach excursions, theatre visits and more. We can do this when we are successful in our applications for grants and so far we have a good track record.

We, that is the members, are all aware of the impact of loneliness which is SAD - Stress, Anxiety and Depression. To see people who have lost their self-confidence/esteem and recover to take part once again in the community is such a huge reward and makes all the hard work worthwhile. Like other charities, we are always looking for volunteers and this can range from 1 hour a month to more hours dependent on the volunteer.

Our leaflet does say **DON'T BE SHY - GIVE US A TRY** so why not come along and enjoy friendship. just-friends.uk

Older People's Day 2021 We're Back!

Older People's Day is an opportunity to celebrate the many contributions that older people make to society. It is traditionally observed internationally on 1st October each year. Kate Davies of the Meridian Mature Citizens Forum tells us what is happening locally this year.

After the almost impossible 'celebration' last year when most of the events were online the Forums said - No! We want our Older People's Day back as a booklet with events that people can go to and enjoy with both old friends and new. To be fair we couldn't have attended any events last year,

we couldn't go anywhere.

Now, fingers crossed, we can enjoy an action-packed booklet which is available in September. There are also some online events which proved to be popular last year; give them a try.

This year, Meridian Mature Citizens Forum have decided to re-visit their last OPD events - a visit to Battle and a film matinee at the Hillcrest Centre. All details and costings are in the booklet.

This year the Forum asks you to look out for people who may not know anything about Older People's Day or may have picked up a booklet at the library and not realised that it is an open invitation for all.



You don't have to be a Meridian member but it would be nice if you were. For further information contact: katedaviesofpiddenhoe@gmail.com 01273 516207.



HEAD OF THE OUSE REGATTA

28TH AUGUST 2021

© Martin Sinnock

The River Ouse has a growing rowing community, so a Head of the Ouse Regatta was an opportunity to get this community together, along with other maritime partners to celebrate and enjoy our river in a friendly way. This year Lewes Rowing Club, Lewes Pilot Gig Club and Affinity Rowing Club competed and also gave raised money for two amazing Charities (Limbpower and Invictus Foundation), with support from Newhaven NCI and the Mayors of Lewes and Newhaven.

But instead of a dry boring summary of the day, why not read about the event in the words of one of the Affinity rowers, Matt Coyne:

As a club it was our first "Head of the Ouse" in our beautiful Cornish gig Grace and I don't think any in our crew knew really what to expect with the near 10,000m row. How long would the row take? Would we make it? Could we row that far? Would we come dead last? So many questions.

I think our crew were all pretty happy that we weren't racing (to start with anyway), but more that this was going to be an epic experience for our gig club and to see just what

was possible for us after a very sporadic 18 months of rowing together. We watched the other crews start, one certainly looked more, how shall we say, confident than us as they took off across the line. You could see a few nerves creeping into our boat with some cautious cheers as we crossed the start line, wondering if we should have been rowing like they had begun.

And that was it... we were off. We were in our first race together. Wait a minute... we were RACING.

Sat in bow, about a third of the way through the course, I fixed a quick glance behind me, and I could see we were making progress, gaining on the other boats who started ahead. My old competitive hat was turning on as I realised, with this epic crew, we might just have a chance at fighting for the lead. We were getting closer, a few boat lengths now, closer again, one boat length to go... then we had to wait for the bridge before we'd push again.

It was absolutely amazing to have some of our Affinity family and crew at Southease Bridge there cheering us on. Working hard with our crew

and seeing our pals ecstatic cheering was just the push we needed to get us through to the finish. "One more bend" we all shouted (sadly I knew it was a few more), as we snaked our way to the finish line at Lewes, and that was it... before we knew it we'd pushed ourselves over the line and kept going... we'd finished. And we'd won!

As much as the row was an amazing experience and the win was truly epic, it was the coming together of an amazing group of people, already a few years ago now, that pulled together this amazing mini community called Affinity. It's this community and the event organising crew, that got us all to the start line today. I'm really proud and honoured to have rowed with such an awesome crew.

Interested in knowing more?
Check out the local rowing clubs:

Lewes Rowing Club
www.lewesrowingclub.co.uk

Newhaven Gig Rowing Club
www.ngrc.co.uk

Lewes Pilot Gig Club
www.lewespilotgigclub.co.uk

Affinity Rowing Club
www.affinityrowingclub.co.uk

COAT OF HOPES

A community created patchwork coat, carrying people's hopes on pilgrimage from Newhaven to Glasgow for Climate Summit COP 26.



A COAT MADE BY ALL FOR ALL

On 30th August the “coat of hopes”, a travelling work of community created performance craft, instigated by Lewes artist Barbara Keal, set out from Newhaven East Pier on a nine week walk to the UN Climate summit COP26, in Glasgow. Worn by many

and varied “coat pilgrims” the initially blank “undercoat” will gather patches made of blanket embellished by local people along its 500 mile route.

Patches will be added to the coat at regular “stitching stop” events along the way. Each patch will be unique and carry its maker’s remembrances, griefs, prayers and hopes for their local landscape in the

face of climate and ecological breakdown to the delegates at COP26, where they will be invited to try on the coat and feel the weight and the warmth of people’s hopes. Patch makers include a wide range of people: young mothers, men in prison, school children, refugees – every person is invited to make a patch.

The first patch, made by Newhaven’s Town Crier, was sewn to the coat on Newhaven beach before its departure for Lewes. He sent it on its way with this specially written cry:

Oyez! Oyez! Oyez!

Pilgrims of this Good Earth,
please hear what I say,
As a message of hope leaves
Newhaven today,
And to Glasgow will surely
make its way.

The blue heart of our world is
broken,
Its old Green Man lies unwell,
Our planet is burning,
Its wild heart is dying,
As we near the last toll of the
bell.

But we’ll continue to fight for
this wild world,

To protect all its life, old and
new,
And we’ll stand, shout and
march here together,
And prove what has always
been true –
That commitment and love
shall win through.

People of Newhaven, let us
stand with every community
on the planet in supporting
the message that the Coat
of Hopes takes to the world
leaders at COP 26.

God Bless the Coat of Hopes.
Peace and love to the world.
God save the Queen.



Would you like to get involved? Request a kit by going to www.coatofhopes.uk, clicking on ‘Get Involved’ and then ‘Make a Patch’. You will be sent a free kit with everything you need to know and some materials. It will then be sewn on at one of the stitching events later in the journey. Follow the Coat’s journey [@coatofhopes](https://twitter.com/coatofhopes).



CELEBRATION AT NEWHAVEN YOUTH CENTRE OPENING!

SCDA celebrated at the Newhaven Youth Centre launch event on Denton Island on Thursday 19th August. Construction of the brand new Youth Centre was completed in March 2020 and Covid restrictions have meant postponing the opening event until now. However, as restrictions have gradually lifted, local young people have begun to enjoy using this unique, purpose built space.

We were pleased to welcome representatives from, and give thanks to, our generous funders including the National Lottery Community Fund, LandAid, Sussex Community Foundation, Rampion and Newhaven Town Council.

We also welcomed the Lord Lieutenant and High Sheriff of East Sussex, the Mayor of Newhaven, the Chair of Lewes District Council and SCDA trustees.

We were also pleased to receive the Sussex Heritage Award, given in recognition of achieving the aim of the project, which was to create a forward looking building with exemplary sustainability credentials and to add a specific youth facility to the community centre. Built on a brownfield site, formerly an electronics factory, there were specific challenges. The end result provides a wonderful bespoke space for young people to enjoy!



COMMUNITY FRIDGE OPENS ON DENTON ISLAND!

Free, healthy food that was otherwise headed for landfill is available thanks to a new project based at Denton Island Community Centre. The Community Fridge, just inside the front door, is stocked with food and anyone can donate or can take food for free. Visit Denton Island Community Fridge as often as you like – it is open from Monday to Friday 9am to 5pm.

For more information about what foods you can donate, please email food@sussexcommunity.org.uk or pop along to Denton Island Community Centre – there is full guidance on the fridge door.

OPEN DAY!

We enjoyed a wonderful day at Denton Island Community Centre Open Day on 19th August, and were thrilled to open the centre for local families to come and see what activities go on and how they can get involved. The sun was shining and everyone

had a chance to take a look around the whole centre and experience the beautiful new gardens. From pedalling on the smoothie bike to making beautiful dragonflies to take home the children and families in our community had a wonderful day!





REMEMBRANCE SUNDAY

14TH NOVEMBER 2021

The annual service and parade for Remembrance Day takes place this year on Sunday 14th November. As usual there will be a service at St Michael's Church, starting slightly earlier this year at 9.30am.

Following the service, the parade will form up in Neill's Close, before marching down Meeching Rise, across and down the one-way into Meeching Road, down the High Street and finally along Bridge Street to the Memorial Green. At 11am there will be a two minute silence followed by prayers and wreath laying.

Over the last few years, in commemoration of the 100th anniversary of the First World

War, school children read the names of Newhaven casualties who died as a result of that war, and laid wooden crosses for each of the casualties at the Memorial Green. At the time of going to press, we were not sure whether the children would still be involved. However, one thing is for sure - given last year's restrictions many people will want to turn out to pay their respects in the traditional way.



CTLA
TRANSPORT FOR YOUR COMMUNITY

CTLA is an award winning charity providing affordable, accessible transport to the residents and groups of the Lewes District and Surrounding Areas



Our services include:

- Dial A Ride
- Travel Club for days out
- Community Group Hire
- Community Shopping Service
- NEPT – Non-Emergency Patient Transport
- Scheduled Bus services 131,132, 246, 248, 249

Membership is **free** and joining is easy – Call **01273 517332** and speak with one of our friendly Customer Service Advisers or contact us via our Website on www.ctla.org.uk

Follow us on   

Membership subject to qualifying criteria

Community Transport for the Lewes Area – registered charity 1110215 – company with registration 04409570

WILDER GARDENS



The Wilder Gardens project has trained 27 Wilder Garden Champions in first aid, health and safety, and surveying bats, moths, bees, bugs and butterflies. People have made new friends in their community and helped wildlife at the same time. Many have been rewilding their gardens in the centre of town and telling us about local wildlife sightings. We have been thrilled and at times overwhelmed with enquiries from the public

wanting to know what changes to make to help our wildlife. Some have sown wildflowers in pots for the first time and learnt how to make water bars for bees, some have stopped mowing their lawns and discovered they have lots of wildflowers. Others have dedicated large areas of their gardens to rewilding and learnt how to survey wildlife. If you are interested in creating wildlife havens in your own space and making friends in your community get in touch at infowildergardens@yahoo.com.



SUPER SEEDY SATURDAY SEED SWAP

On Saturday 23rd October the Hillcrest Centre will be the location of the Greenhaven's First Havens Seed Swapping Event.

Come along and find out about the work of the Charity which encourages communities to work together to promote positive changes to people's lives and their communities and the green spaces we all love.

Greenhavens will be asking its members and locals to come along with any seeds for swapping and sharing to make our green spaces blooming marvellous in the future. We will be open from 11am to 3pm.

There will be local craft stalls to browse and activities for the children as well as the café being open for refreshments.

Greenhavens Network is a network of over 100 community groups that join together to deliver great projects across the Lewes District. Through sharing skills and knowledge we help each other, connecting people and wildlife.

Many of the supporters and local charities will be in attendance to promote the great work they do across the Havens.

We really hope you will come and join us for a fun filled few hours and help support our wonderful volunteers and members.



For more details on the event please check out our website: greenhavens.network.

KNOW YOGA, KNOW PEACE, NO YOGA, NO PEACE

Study of the ancient texts inform us that Yoga is over 5,000 years old.

Some may remember it was introduced to the West in the 60's by Richard Hittleman, long before the Beatles were taught meditation on their visit to India in the 70's!

Many regard the practice as a form of slow keep fit, however there are 5 forms of Yoga: Hatha Yoga, Raja Yoga, Jnana Yoga, Bhakti Yoga and Karma Yoga.

- A Hatha Yoga (physical practice) session involves performing postures (Asanas) whilst incorporating breath and movement followed by relaxation.
- Raja Yoga (meditation) is seen as the ultimate goal of regular practice; indeed "Mindfulness Meditation" has become

extremely popular in the West and is recommended by the medical profession as a successful therapy for those experiencing anxiety/stress or tension, especially following the past lockdowns.

- Jnana Yoga (knowledge) is a by-product of regular Hatha Yoga sessions as students become interested in learning more about "how yoga works" and are keen to investigate the personal transformation they experience after only a few sessions.
- Bhakti Yoga (devotion) is a natural development enhancing positivity in thoughts and actions, achieved via regular "Mantra Chanting".
- Karma Yoga (being of service to others without looking for

rewards) "as you sow – so shall you reap", great joy is gained via being considerate and always willing to help others. This is the philosophy behind Yoga.



Would you like to develop your understanding of this ancient science? Contact Janet Bond (British Wheel of Yoga Senior Teacher Trainer - Reiki Master & Sound Healer): email samtosha4u@btinternet.com or call 01273 512306.



- ✓ FREE DELIVERY ON ORDERS OVER £20.
- ✓ VEGAN OPTIONS AVAILABLE.
- ✓ GLUTEN FREE OPTIONS AVAILABLE.
- ✓ USE CODE '10%' ON OUR WEBSITE (ORDERS OVER £25).



☎ 01273 513308
🌐 [HTTPS://VICEROYNEWHAVEN.CO.UK](https://viceroynewhaven.co.uk)
🏠 4 BRIDGE STREET, NEWHAVEN, BN9 9PJ



DENTON ISLAND ONLY TWO LEFT ON THIS ISLAND OF RUIN AND DECAY

The residents of Denton Island were told to quit their premises in 1949 by Newhaven Urban Council as the properties were unfit to live in. By September 1955 only two residents remained, this is their story.

SUSSEX EXPRESS-HERALD

9th September 1955



Once inhabited by over 60 families, Newhaven Denton Island's population has been reduced to two. They are Mrs M Willingham, a widow of 2 Sefton-terrace and Mr Percy King, a bachelor of 8 Reeds-cottages. Like other tenants on the island at the time, they both received notices to quit in 1949 as their houses had been condemned by Newhaven Urban Council. Whereas the other residents have been re-housed no alternative accommodation has been found for Mrs Willingham and Mr King.

When Mr. King received his quit notice, he thought he would have to find lodgings, but preferred a home on his own and a garden; he decided to stay. To keep him company he has a dog, a

cat, tame jackdaw, rabbits and canaries. All around him are falling down houses and his own home is damp due to the demolition of the house next door. He pays 7s 1d a week rent.

Mrs Willingham says she would gladly move if she could find another house. Her house for which she pays 10s 4d a week rent is close to the river. During a heavy thunderstorm last month her kitchen floor was under water. Last February the flooding was so bad she called the Fire Brigade to pump out the water.

Mr. King can remember the time in 1918 when heavy flooding caused all the families on the island to live upstairs and many pigs were drowned in their styres.

And what are Newhaven Urban Council doing about the island? "The question has not been considered for the last two years" said an official. "The idea of turning it into a recreation ground has been shelved because of excessive costs." There has been a suggestion that the island could be turned into a mecca for light industry

- there is one factory there now – but no-one apparently knows who is responsible for the dredging of the River Ouse on the west side of the island. The river there is silted up and is nothing but a mud flat at low tide.

If it was dredged and proper land stagings built it would make an ideal anchorage for small boats, such as yachts. The island covering some 13 acres is now mainly used as a refuse tip, and the gaunt empty, semi-demolished houses are ugly monuments of decay and neglect. The smell from the refuse tip pervades the town and rats roam about unmolested.

Some of its former inhabitants say the island is one of the healthiest places in the town, and many would like to return if there is suitable housing.



The aerial photograph of Denton Island was probably taken in the 50's. The white building to the left of the old bridge would later be replaced by H.R. Electric Motors. Going back to the 20's to the left of the bridge would have been Catt's Cottages. To the right of the bridge was Sefton Terrace which followed the old river round to the 'new cut', later the North Quay. The 'Huts' and Reeds Cottages were slightly inland from the bridge. Note, Denton Island was not an island until the 'new cut' was made (more about that in the next issue).

Several businesses have had a home on Denton Island: H. R. Electric Motors, Fergusons, Fludes and Co-op Dairies to name a few. In 2002 there was the Denton Island regeneration project. It is almost impossible to look at Denton Island as it is now and imagine how it was in the late 19th and early 20th centuries.

Citizens Advice warns of perfect storm of energy bill rises and Universal Credit cut

New analysis from Citizens Advice shows how rising energy bills will coincide with Universal Credit cuts this autumn, creating a perfect storm for families. The charity's research is released as Ofgem announces £139 rise in default tariffs and £153 increase for prepayment meter customers.

The rise which takes effect in October will hit family budgets just at the same time as the government's planned cut of £20 a week to Universal Credit, which covers six days energy costs for a below average income household, affecting 6 million homes. It will also coincide with the end of the furlough scheme, which the

charity warns could lead to further job losses and more families being pushed onto benefits.

The charity's new analysis shows that nearly 2 million households are already behind on their energy bills, even before the new price rise and planned Universal Credit cut - an increase of around 410,000 from before the pandemic. More than one in four (28%) households in which someone receives Universal Credit are behind on their energy bill. Fuel debt was the most common debt problem so far, the charity says the numbers affected could worsen considerably later this year.



Anyone requiring support or assistance should contact Citizens Advice on

- Universal Credit Help to Claim line 0800 1448444
- Adviceline 0808 278 7892 Monday - Friday 9am to 5pm.
- Email advice www.eastsussexcab.co.uk
- Chat online to an advisor citizensadvice.org.uk/contact-us.

La Baguette Shop



For freshly baked genuine French Bread, continental and traditional sweet and savoury pastries, delicious home-made soup and snacks.

Open Monday to Saturday
31 High Street Newhaven • 01273 516129

**Has your tax bill
made your
hair stand
on end?**



Then call Tasker Osman & Co on 01273 512749 to arrange a **FREE** no obligation meeting with one of our partners to discuss your tax & accountancy affairs



Tasker Osman & Co.
Financial Accountants

Website: www.taskerosman.co.uk
Phone: 01273 512749
Email: jon@taskerosman.co.uk
Address: 10 South Way, Newhaven
East Sussex BN9 9LL

Partners: Kevin Osman FFA/FIPA, FAIA, FFTA, Jon Sanders FFA/FIPA, FMAAT, FFTA



The picture above is of St Michael's church which, it is said, was an old Norman church built around 1120. It is one of the first Norman churches to be built in England and is a copy of a church at Yainville in Normandy. What is exceptional in this church is the arrangement of chancel, tower and nave.

On the outside the nave was the same width as the tower but on the inside, due to the thickness of the tower walls, two compartments were formed and together with the apse forms the only existing example of the type in Britain.

In the churchyard are two memorials, one to Thomas Tipper, a local brewer. Thomas owned the Bridge Inn and his brewery was at the rear. The other memorial is an obelisk to the loss of the ship HMS Brazen which floundered on the rocks off Newhaven. 73 of the seamen are buried within the graveyard.

A piece of stone from the tower was sent to New Haven, Connecticut in 1938 and was placed in the wall behind the high altar.

Our Newhaven is an easy to use website project set up in 2007 and is run by volunteers. The aim of the project is to build a living history of Newhaven and the surrounding areas through the words and photographs of people who have and do live in the town.

You can contribute online at www.ournewhaven.org.uk or write your memories down and leave your photographs, postcards, slides or negatives for Our Newhaven, c/o Newhaven Town Council Offices, 18 Fort Road, Newhaven. We will return your images as soon as possible.

THE VILLAGE TO RAISE A CHILD PROJECT, (VRAC) IN NEWHAVEN



The VRAC project exists to support young people and their families to improve their well-being, and overcome the barriers they face in engaging in education.

The VRAC project will provide up to 12 months of free support to the VRAC participants, (selected young people and their parent/carer). The VRAC project aims to work collaboratively with young people and their families and/or carers, schools and selected services around the young person, to produce a sense of belonging, stronger educational engagement, and more enjoyable experiences. It aims to support the services

that people use to work together as much as possible.

VRAC's free support includes:

- The Wellbeing Team service
- PACE extended learning time (delivered by SCDA)
- Smooth Moves school transition support, (delivered by Priority 1-54 training and workshop providers: priority154.com)

The VRAC Wellbeing Team will support selected young people, and their parents or carers, in a variety of ways, including:

- Create, offer and signpost to appropriate opportunities
- Listen to concerns and experiences
- Provide young people with

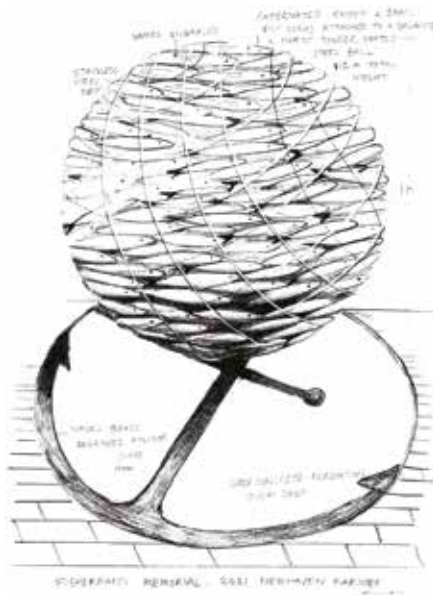
- free counselling sessions
- Suggest (and signpost to) activities and/or services
- Support solution-finding
- Take a wide view towards supporting families and young people.

East Sussex Community Voice is delivering VRAC in both Newhaven and Hailsham in East Sussex.

If you think that VRAC could help you, or someone you know, please contact the VRAC project to hear more.

Email: donna.lonsdale-o'brien@escv.org.uk
Call: 07398 671431

FISHERMEN'S MEMORIAL



No-one can fail to be aware of the tragic loss of the fishing boat 'Joanna C' and her crew, and the depth of feeling expressed by the fishing community and local residents. Both our Mayor and local MP Maria Caulfield are currently in dialogue with the affected families together with local artist/sculptor Christian Funnell, whose memorial design has been agreed with the families.

A Crowdfunding page has been set up to finance its production and installation by Christian, and the community is busy fundraising to reach its target of £20,000. The families are keen for this memorial to be erected on the Marina Promontory by the Lifeboat Station, where there are currently several temporary commemorative pieces to the 'Joanna C' crew, and where the community gathered en masse some months ago to mark the tragedy. Subject to permission, fabrication and installation of the memorial is anticipated for Spring of 2022.

The family of lost Newhaven fisherman Robert Morley have led the fundraising, and one of them said: "We really appreciate everyone's support in the local community, we wouldn't have been able to achieve our goal without it."

You can donate to the fund at www.gofundme.com/f/memorial-for-our-lost-fisherman.



Way back in May 2020 we defied Mr Virus stating that he was definitely not going to defeat us. Well, we have been proved right! After many stops and starts due to Covid-19 restrictions we have returned to rehearsals at the home of our choir, the Hillcrest Centre. What a joy to be together again doing what we love, singing and making music together. So if you would like to join us on Monday evenings from 7 – 9pm under the excellent leadership of our musical director Rosie Brown do come along. No auditions and no need to read music. The first week is a taster session and then after that the fee is £6 every time you attend.

havenharmonies.wordpress.com or email Marian Stanley – marianstanley43@gmail.com.

MAYOR'S CHARITY CAKE SALE

The first of my mini fundraisers for local charities was a cake sale for The Nebula Mental Health Group. What a great start it was! Cakes were donated by local bakers including Honey Bakes, A Ray of Cupcakes, Simply Marvellous Cakes, The Garden Kitchen Company and Lindylou's Bespoke Cakes. A massive thank you to them for all their donations. Thanks to everyone's generosity we made £250 for the Nebula

which will go towards room hire for meetings.

The Nebula Mental Health Group is a free, peer-led group set up by Pinky McLean-Knight. Meetings are held every Monday at 2pm at the Hillcrest Centre. No need to book to join, just turn up.

Thank you to Havens Community Hub for hosting.

If you're interested in a similar event for your group or charity please get in touch by email at Cllr.Lesley.Boniface@newhaventowncouncil.gov.uk.





NEWHAVEN TREE WARDENS

Making Newhaven
green and leafy

Autumn is just around the corner and with it comes the tree planting season! Newhaven Tree Wardens will be out and about planting trees again this year. If you have any suggestions for sites where we could plant some trees, please email us at: BN9Trees@hotmail.com.

Or if you're on  Facebook,  Twitter or  Instagram, you can contact us there, and why not give us a follow: [@BN9Trees](https://www.instagram.com/BN9Trees).

Newhaven Tree Wardens also have a scheme to help you plant a tree in your garden. The 'Front Garden Scheme' allows us to offer a limited selection of trees, at a heavily discounted price, for any Newhaven resident who would like to plant a tree in their front garden.

Why the front garden? So everyone who passes by your home can see and appreciate the beauty of your tree. All we ask is that you look after it with care and keep it alive! If you're interested, please get in touch with us, we'll even dig the hole and plant the tree for you!



Poet-tree

Local poet Rich Hume wrote this lovely poem for us to celebrate the planting of the Christmas tree on Denton Island last year, which was read out at the Carols at the Bandstand event just before Christmas.

OUR TREE

We celebrate this time of year, this tree represents the reason,
Marking the return of light, the dawn of love, the turning of the seasons,
From solstice dark to solstice light, Gaia turns in heaven's heaving,
The tale of light's rebirth, renewal, foretold by prophets legion.

Our tree will watch the seasons spin through light's great ebb and flow,
She'll watch the heaven's turn, gyrate, she'll feel the gales blow
She'll withstand the dryness, and the dark, she's resilient, ever so,
That cycles through time's passage turn, bringing change once more,
she knows.

Just as our tree watch-guards the year, we watch-guard for each other,
Sure permanent in light and love, just like the sun, our brother,
Despite the gales, despite the frost, we thaw our hearts as lovers
Of newly rising light that thaws the heart of Earth, our Mother.

We celebrate warm light's return, in days of heart-lit joy
And screaming fun from every pore, for every girl and boy,
We dash around crying love-words loud, delivering parcelled joy,
Proving we are folk of light, that Christmas is more than toys.

Resolute we make a statement here, and state our firm intention,
To include the folk who need a break, for Covid forced abstention,
From normal life and blocked the light, and ruined the duration,
But here we are, undaunted yet, full fixed on celebration.

Forget the chores, the daily bores, the doobery-flips, mind hassle,
Together drawn in merriment's halls, full ready for the tattle,
Of remember-whens and do-you-believes, as loosened tongues do rattle,
In Christmas fun, children's mirth exclaimed, as we sing of lo'ing cattle.

The light returns, Gaia spins anew, things change as time goes by,
We mustn't forget the important things that make a fruitful life,
Each other, every soul we meet, every single chance or time,
To spread the word, the love, the cheer, and welcome in the light.



LOOKING AFTER YOUR PROPERTY

A guide by Meeching Estate Agents (Part 1)



One of the biggest issues facing many residents is black mould and damp. Before the advent of double glazing and central heating, older properties (of which Newhaven has many fine Victorian examples) had sash windows and open fires. Today that's not very cost-efficient or kind to the environment, but before people worried about those things, the draughty windows and open fires let a house breathe and condensation wasn't an issue.

Today, with a lot of measures taken to minimize heat loss and draughts, us humans still give off the same amount of moisture that our ancestors did, but these days it can't escape 'up the chimney' and instead collects on a cold surface. That may be a wall, or for some of us, a single glazed window (remember those days?!) and over time, this condensation, which is nice clean water, can give rise to the growth of mould.

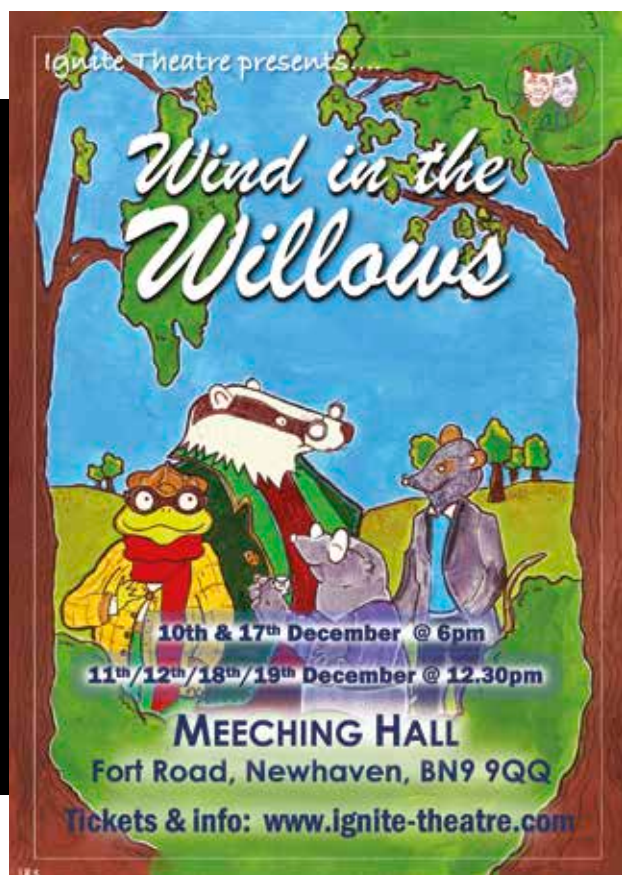
Coincidentally, if you notice any dirty coloured stains on walls, this unlikely to be condensation, but damp penetration from outside.

There are several ways of dealing with mould, obviously wipe it off regularly and treat the area with an anti-mould spray. Next, make sure you keep your home adequately heated and ventilated and avoid drying washing over the radiators – that's a guaranteed way to encourage mould growth.

If you suffer persistently despite your best efforts, a dehumidifier might be the answer. Modern machines are very quiet and cost efficient and work excellently to keep condensation to a minimum.

If you would like to know more about maintaining your home and are interested in a free valuation, why not call Meeching Estate Agents on 01273 515566.

Next time – property maintenance.



WIND IN THE WILLOWS

Newhaven's new theatre company Ignite Theatre are pleased to announce their Christmas production of Wind in the Willows, following the hugely successful production of Memory of Water in the summer. The stage will be brought to life with animated projections and live music. Tickets will include the opportunity for children to have their face painted and keep animal masks so that audience members can be part of the exciting world of Toad Hall and the winter forest. Snacks and drinks will be available so arrive in good time for some Christmas activities and wonderment before a truly magical performance.

If any members of the community would like to be involved in backstage, stage set or stewarding, email hello.ignite.theatre@gmail.com.

NEWHAVEN ART CLUB

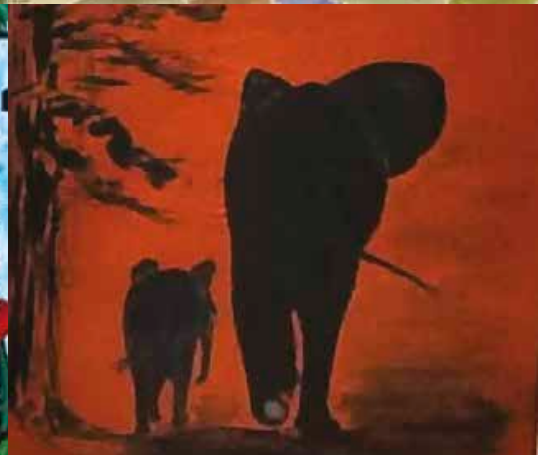
Newhaven Art Club is stronger than ever with regular meetings, shows and projects in person and online when necessary. The club has been

a great source of comfort, friendship and inspiration to its members during recent times. Weekly meetings (in person) resumed at 2pm at Peacehaven Evangelical Church hall from September 2021.

We are always keen to welcome new members whatever their ability. You don't have to be a Picasso or Monet, just keen to give art a

go surrounded by supportive friends who encourage you to learn and enjoy art.

Check out the club's new website for more details at www.newhavenartclub.co.uk or ring Dawn Wells (chairperson) on 01273 516792 or email us at info@newhavenartclub.co.uk.





The inaugural Sussex Craft Beer Festival at Newhaven Fort on October 16th is on track to sell-out with hundreds of enthusiasts making short work of remaining tickets on sale.

The team that brought the hugely popular Sussex Gin & Fizz Festival to Lewes have been thrilled by the levels of interest in Brewhaven and the number of tickets sold since the online box office opened.

BREWHAVEN: CRAFT BEER ARMY ON MARCH TO FORT

Beer enthusiasts warned not to miss out!

Handpicked breweries will showcase their beers and sell direct to those attending the festival, along with a host of local food producers serving delicious treats.

Councillor James MacCleary, Deputy Leader of Lewes District Council and Newhaven councillor, said:

"Tickets are selling fast and while Newhaven Fort is the largest defensive military structure ever built in Sussex, an army of beer drinkers will soon fill it up.

"The day promises something for everyone with family friendly entertainment planned in the afternoon and a more festival feel for adults during the evening.

"We have microbreweries springing up across our area and I am really keen to support our local brewers. I hope this

will become an annual event that may even encourage someone to start up a brewing project down here on the coast!"

The Fort café will also be serving soft drinks, ice cream, snacks and sandwiches and younger visitors can also take advantage of the adventure playground. Live music will be ringing round fort walls day and night and you can expect a few sea shanties when the sun goes down.

Ticket numbers are limited to ensure a safe and spacious experience for everyone – get yours now at www.visitlewes.co.uk/brewhaven.

They cost just £10, with £5 tickets available for under 18s at the afternoon session only.

Note: please travel by public transport if possible, as there is limited parking at Newhaven Fort.



The local branch of u3a returned in August to hold its first monthly meeting since restrictions, joined by 17 new members. Popular days out also resumed, with excursions to beautiful gardens and Arundel, and the club is now taking bookings for the fun-loving Lunch Bunch. As theatres re-open, tickets have been reserved for several shows in Eastbourne and Brighton.

Group activities such as singing, ukulele, art group, Scrabble, Bridge, books, discussion and French are coming back too. New leaders are needed for photography, poetry and philosophy. Learning is so much easier when you do it with others!

Monthly meetings are on 1st Thursday afternoon of each month, either in the Meridian Centre, Peacehaven or Riverside Hall, Newhaven. There are guest speakers and bookings can be made for lunches or shows. There's usually a raffle and refreshments, the occasional quiz. Come along if you are free.



The committee and members run everything. Your skills and enthusiasm would be most welcome! Details: Sharon Ahearn 01273 589953 (call 9-5pm please). www.facebook.com/u3anewhavenpeacehaven or www.u3asites.org.uk/newhaven-peacehaven. Email: u3anp@outlook.com



Many people have asked "what is Rotary?" and some told us what they thought Rotary is.

The following is an attempt to correct misconceptions:

Rotary is NOT a secret society, a branch of Freemasonry, a political or religious organization or a cult.

We do not just collect money for our administration (everything we collect goes out to charities or to those in need - our subscriptions cover any overheads).

We are part of a worldwide organisation of over 1.2 million people in 35,000 clubs.

Members provide humanitarian service, encourage high ethical standards in all vocations and help build goodwill and peace in the world. The Rotary motto is "Service above Self".

What do we do? As a club we organise events for members and friends and the wider community (eg quiz nights, senior citizens Christmas party). We have stalls at local fetes and arrange occasional outings.

We can run youth events such as RYLA, Young Citizen and Youth Speaks; support youth groups with Rotaract, Interact and RotaKids. We give donations to local charities and to schools. Recently we have raised money for Newhaven Scouts - ABC Fund - CTLA - RNLI Newhaven - Peacehaven & Telscombe FC - Kempton House - Parkinson's UK -

Care for Carers - Starlight - Dorothy House - Telscombe Hall - Peacehaven Scouts - Mencap (Newhaven) the Air Ambulance and many more, including the purchase of equipment for those with disabilities.

However, Rotary is not all about good works. Friendship and fellowship are important too. We are always happy to welcome new members and if you would like to find out more about us, contact the secretary on 01273 516018 or email info@newhavenrotary.co.uk.

www.newhavenrotary.co.uk or find us on Facebook.

So this is the Rotary Club of Newhaven Coast West, founded by local people with a vision over 52 years ago and serving the community ever since.

OFFICIAL OPENING OF SIDINGS IN NEWHAVEN

Dignitaries gathered to mark the official opening of Sidings, the new harbourside attraction in Newhaven and one of a number of regeneration projects that are planned in the town.

The Sidings is located in the area between the former UTC building and Railway Club, boasting the 'Sidings Bistro' and designed to accommodate further development phases for other businesses and community organisations; Newhaven Gig Rowing Club will soon move into the Sidings.

Councillor James MacCleary, Deputy Leader of Lewes District Council and ward councillor for Newhaven South, said:

"The Sidings is a really exciting addition to a waterside lifestyle that more and more people are enjoying in Newhaven, and with so much more good news in the pipeline, there's never been a better time to live in our wonderful town."

The opening follows hot on the heels of the successful

£19.3 million bid for funding that will kick-start a number of ambitious regeneration schemes across the town.





NEWHAVEN GREEN CENTRE

Newhaven Green Centre is a new project which aims to help people living in Newhaven share resources. If we share more then we waste less, we need to buy less, and so we have less impact on the environment.

Our first stall at the Seaford Environmental Fair in August attracted a lot of interest and we are now in the process of applying to become a registered charity.

From September we will be holding stalls at the Newhaven street market, starting on Thursdays. We will be chatting to people about easy ways to reduce waste and can collect a

few of your items such as used corks and plastics which can't go in your doorstep collections (for example toys and some food packaging). We just request that everything you give us is clean and dry.

In the longer term we aim to start a Sharing Library. This will work like a normal library, where members can borrow items from a collection, but instead of books we will be offering things which you only use occasionally. For example, if you're moving home why buy brand new boxes and bubble wrap when you can use someone else's? We'll be setting up a service where we can take your strong boxes and packaging off your hands when you have moved home and distribute them to people who are about to move.

The sharing library will start with simple items and in the longer term we hope to offer a full range of items such as toys, car seats, games, camping equipment, catering equipment and many more things.

If you want to find out more, you can visit us on our Facebook page (www.facebook.com/newhavengreencentre) where we'll post our 'weekly tips' and you can join our email list if you prefer.

If you might be interested in volunteering, helping at the stalls, want to join our mailing list or just want more information please email us at info@newhavengreencentre.com.

We look forward to hearing from you!



Donate Volunteer Buy

The **Get Socially Active/Recycle** team refurbishes unwanted bikes with the support of volunteers and people wanting to gain work experience.

- Donate your unwanted bikes
- Volunteer your practical skills and valuable time
- Buy one of our newly refurbished bikes

Bike servicing also available.

The **Re-Cycle Project** is keen to support any unemployed or economically inactive people over 16 to become more active in their community, gain valuable skills and experience, build confidence and develop their health and wellbeing to move towards the world of work.

We are currently seeking anyone over 16 to take part in our Re-Cycle project based in Newhaven where they will work with an experienced bike technician and development worker to renovate and restore bikes for sale to the local community. We have a proven track record of placing participants in work experience and then finding them paid employment.

sussexcommunity.org.uk

www.facebook.com/ReCycleNewhaven

Call us now to find out more 01273 516347
or email recycle@sussexcommunity.org.uk

What's On.

1st October – 31st December 2021... (subject to any lingering Covid-19 restrictions)

HILLCREST CENTRE

Newhaven Country Market

Every Thursday 10am - 12.30pm. Sweet and savoury baked goods including cakes, pastries, bread, pittas, chutneys, marmalade and jam. Indian food, spices and chutneys. Free range eggs. Crafts, knitwear, children's clothes, gifts, jewellery, cards and bespoke gift bags. Seasonal fruit and vegetables. All goods locally sourced and produced. Free parking. Cafe. Easy access. Orders taken.

Haven Harmonies Community Choir

7 - 9pm every Monday. No auditions, no requirement to read music. First session free then £6 every week. For more details go to the choir's web site havenharmonies.wordpress.com or email marianstanley43@gmail.com.

Knit and Natter

Monday afternoons at the Hillcrest Centre from 2 - 4pm. Contact: Jackie Gordon 07434 588503.



Hillcrest Wood Creatives

Formerly known as the Hillcrest Woodcarving Club, currently meet on Mondays, Wednesdays and Thursdays from 9.30am to 3.30pm (with the possibility of the addition of other days and times subject to numbers and demand) for not only wood carving but anything creative using wood. For more information see our website: www.woodcreatives.co.uk, email: enquiries@woodcreatives.co.uk or phone Ted (treasurer) on 01323 741878.

Newhaven Ukulele Group ("Nukehaven")

Nukehaven are at last meeting again. We meet fortnightly at the Hillcrest Centre from 7pm to 9pm. New people very welcome, all abilities welcome. Just turn up with a Ukulele. Dates of meetings this quarter are 13th Oct, 27th Oct, 10th Nov, 24th Nov, 8th Dec and 22nd Dec.

Hillcrest Tea Dances

Please phone Fred Weston on 01323 365416.

NEWHAVEN YOUTH FOR CHRIST YOUTH CLUBS

Sparks Youth Group for school years 4-6, St Michael's Hall, Newhaven, 4.30pm to 5.30pm, Sundays (term time only).

Youth Club for ages 11-18, St Michael's Hall, Newhaven, 6pm to 7.30pm Sundays £1 entry (Nintendo Switch, table tennis, table football, group discussions and Craft - term time only).

Youth Club for ages 11-18 - Tuesdays 6pm to 7.30pm at Lewes Road Hut, £1 entry (Nintendo Switch, table tennis, football, group discussion, craft - term time only).

Newhaven Football Club Thursdays 7pm - 8.30pm; entrance in Court Farm Road between the tennis courts.

Contact details for all these youth groups – Sara Alexander, Newhaven Youth For Christ 07763 333998.

NEWHAVEN & PEACEHAVEN U3A



As restrictions ease, activity groups have been starting up again and we will be holding our monthly meetings at 2.15pm on the first Thursday of the month.

For more information: Call Sharon Ahearn 01273 589953 (please call between 9am and 5pm), or go to: www.facebook.com/u3anewhavenpeacehaven or <https://u3asites.org.uk/newhaven-peacehaven/home>.

Get in touch at our new email address: u3anp@outlook.com.

ZARA YOGA & PILATES

Tel: 07532 418542. Email zarano1@msn.com
www.zarayogapilates.co.uk.

Monday 11am Pilates in Meeching Hall, Fort Road.

Wednesday 5.45pm Yoga and 7pm Pilates in Meeching Hall.

Friday 9.30am Yoga and 10.45am Pilates in Meeching Hall.

FRIENDS OF TIDE MILLS

3rd Sunday of every month - Friends of Tide Mills/Newhaven East Side conservation work and litter clearance morning. If you would like to join us and become a Tide Mills guardian, you will be made most welcome. Meet 9.00am at beach end of the old Tide Mills village road. Contact Jim Skinner for more info: brianjimskinner@gmail.com. Winter/Christmas picnic after December meeting.

QUALIFIED REIKI & SOUND HEALERS



Thursday Morning Yoga for Mixed Abilities, 10-11.30am.

Monthly Sunday Afternoon Sound Bath, 2.30-4pm on 17th October and 21st November, and on Wednesday 15th December at 7pm. Sensational Therapeutic Relaxing & Re-energising Sound Bath Experience in a beautiful Yoga Studio with all equipment provided. Advance booking recommended as participants will be limited to a maximum of 8, to ensure individual support and attention. Delivered by Qualified Reiki & Sound Healers, Mike & Janet Bond. Indulge yourself in some "Quality ME Time". Call 01273 512306 or email samtosha4u@btinternet.com <https://samtosha4u.com>.

PATIENT PARTICIPATION GROUP

Patient Participation Group at Quayside Medical Practice: December 7th Quayside Medical Practice meeting of the Patient Participation Group 6.30pm. For more details please contact the surgery: www.quaysidemedicalpractice.nhs.uk/ppg.aspx.

NEWHAVEN HISTORICAL SOCIETY



The museum, located at Paradise Park, is open from 11am – 4pm on Tuesdays, Wednesdays, Fridays and Saturdays until 30th October. Members free, non-members £3.00, accompanied children free.

Newhaven Historical Society is holding the following talks at the Hillcrest Centre, doors open 7.00pm for a 7.30pm start. Free to members, non-members £5.00.

Tuesday 6th October: 'The Commonwealth War Graves Commission and the Newhaven war graves.' Ian Everest will look at the origins of the Commission and its work in constructing and maintaining the cemeteries. He will also look at Newhaven's war graves and the 'missing' German military graves from World War Two.

Tuesday 7th December: 'A sporting history of Sussex – from the amazing to the bizarre.' Matt Homewood takes a light-hearted look at the history of sporting events in Sussex, from cricket, football and horse racing to menagerie races and piano bashing!

ROYAL BRITISH LEGION

Royal British Legion meets at the Prince of Wales pub in South Road on the first Thursday of every month; 7.30 for 8.00pm. All welcome. Tel 01273 514258.

DENTON WOMEN'S FELLOWSHIP

Denton Women's Fellowship meets on the following dates in Denton Church hall at 2.30pm:

Oct 26th A talk by Ian Everest on 'Villages of the Ouse valley'.

Nov. 23rd An outing

Dec. 17th Christmas party

New members very welcome (small entrance fee applies). Contact: Ann Saunders 01273 514482, email pip39pip@gmail.com.

GREENHAVENS NETWORK



6th October: online Q&A session with Dave Goulson, 7 - 8.30pm. We are delighted to have Dr Dave Goulson, Founder of Bumble Bee Conservation Society to answer your questions about Wilder Gardens in the Greenhavens. All bookings via Greenhavens Network eventbrite - www.eventbrite.com/e/professor-dave-goulson-qa-session-wilder-gardens-tickets-165036650063.

16th October: Greenhavens Network Workshop: Looking Towards the Future, 10am to 1pm.

Come along to Lewes Road hut in Newhaven and have your chance to influence how Greenhavens works in the future. What do you want in your communities? What should we be focusing on? Do you want to get involved? What green spaces matter to you?

23rd October: 'Super Saturday Seed Swap'. Come and meet your local community groups and swap some seeds, planting a tree for the future of the Havens, 11am to 3pm at the Hillcrest Centre.



The Club offers the following sessions and activities to its members and non-members (who are considering becoming members). Please contact Bob 01273 512162 for membership details and Clive 07526 267560 for coaching details, or email: mailrkjackson@yahoo.co.uk.

All ages welcome. All one-hour group coaching sessions for juniors cost £4.00 (non-members pay an additional £2.00). For non-members, a guest fee of £5.00 applies to all adult club sessions.

Every Saturday

Three junior members' coaching sessions; 9.00am, 10.00am & 11.00am start

Adult club sessions 1.00 - 4.00pm (open to non-members, with a view to becoming members)

Every Sunday

Mix of adult and junior members' coaching 9.00am - 1.00pm

Every Tuesday

Adult club sessions 1.00pm - 4.00pm

Every Thursday

Adult club sessions 1.00pm - 4.00pm

Club Members can use the courts any day of the week during daylight hours.

SCDA YOUTH CLUBS

Junior Youth Club – 8-11 year olds - Mondays 5-7pm – Newhaven Youth Centre, Denton Island.

Wednesday Youth Club – 12-18 year olds - Wednesdays 6.30-8pm – Newhaven Youth Centre, Denton Island.

Friday Youth Club – 12-18 year olds – Fridays 6-7.30pm – Newhaven Youth Centre, Denton Island.

Platform-9 – Free Wellbeing 1:1's – 11-18 year olds – Various appointments – contact us to book: youth@sussexcommunity.org.uk.

Free Wellbeing groups – 11-18 year olds – Newhaven Youth Centre, Denton Island – contact us to refer: youth@sussexcommunity.org.uk.

Free Youth Counselling – 11-18 year olds – contact: counselling@sussexcommunity.org.uk to refer.



Londis

Newhaven



We're really proud of the products and services we offer and place our town at the heart of everything we do!

MERRY CHRISTMAS

OFFER AVAILABLE
04/10 - 10/10/21

£12.99

£14.00



20 x 300ml

OFFER AVAILABLE
11/10 - 17/10/21

BETTER THAN
**1/2
PRICE**

£1.19

£2.99



170g

222g



352g



OFFER AVAILABLE
18/10 - 24/10/21

£1.75

OFFER AVAILABLE
25/10 - 31/10/21

£1.50



drinkaware



Londis Newhaven
46 High Street
Newhaven
BN9 9PD

Monday -Saturday
7am-11pm.
Sunday
8am-10pm.

Offers subject to availability, E&EO