

Newhaven Matters

Spring 2022 // Issue N° 33



Do you recognise anyone from this photo taken in 1977?

Lawes Avenue Newhaven. The Queen's Silver Jubilee 1977 (from Newhaven Historical Society Archives).

Welcome to the Spring edition of *Newhaven Matters*, the free magazine for Newhaven residents produced by Newhaven Town Council.



Contact your local Town Councillor



DENTON WARD



Bill Giles
t: 07720 399189
e: Cllr.Bill.Giles@
newhaventowncouncil.gov.uk



George Taylor
t: 07479 077776
e: Cllr.George.Taylor@
newhaventowncouncil.gov.uk



Charlie Carr
t: 07952 525079
e: Cllr.Charlie.Carr@
newhaventowncouncil.gov.uk



Viki Lees Martin
t: 07943 696244
e: Cllr.Viki.Leesmartin@
newhaventowncouncil.gov.uk



Angela Simmons
t: 01273 515189
e: Cllr.Angela.Simmons@
newhaventowncouncil.gov.uk

NORTH WARD



Steve Saunders
t: 07976 371116
e: Cllr.Steve.Saunders
@newhaventowncouncil.gov.uk



Paula Woolven
t: 07710 426 321
e: Cllr.Paula.Woolven@
newhaventowncouncil.gov.uk



Lesley Boniface
t: 07979 763281
e: Cllr.Lesley.Boniface@
newhaventowncouncil.gov.uk

CENTRAL WARD



Christoph von Kurthy
t: 01273 514540
e: Cllr.Christoph.vonKurthy@
newhaventowncouncil.gov.uk



Paul Boswell
t: 01273 515566
e: Cllr.Paul.Boswell@
newhaventowncouncil.gov.uk

SOUTH WARD



Graham Amy
t: 01273 514942
e: Cllr.Graham.Amy@
newhaventowncouncil.gov.uk



Kim Bishop
t: 07793 358790
e: Cllr.Kim.Bishop@
newhaventowncouncil.gov.uk



James MacCleary
t: 01273 514452
e: Cllr.James.MacCleary@
newhaventowncouncil.gov.uk



Joe Emery
t: 07735 061165
e: Cllr.Joe.Emery@
newhaventowncouncil.gov.uk



Marlene Amy
t: 01273 514942
e: Cllr.Marlene.Amy@
newhaventowncouncil.gov.uk



Sean Macleod
t: 07780 944934
e: Cllr.Sean.Macleod@
newhaventowncouncil.gov.uk



Heather Pinky McLean
t: c/o 01273 516100
e: Cllr.Pinky.McLean@
newhaventowncouncil.gov.uk



Julie Carr
t: 07757 722927
e: Cllr.Julie.Carr@
newhaventowncouncil.gov.uk

CONTACT YOUR LOCAL MP



Maria Caulfield MP
Unit 6 Villandry, West Quay, Newhaven BN9 9GB
t: 01273 513509
e: maria.caulfield.mp@parliament.uk

SPRING 2022



I can't quite believe this is my last introduction – my time as Mayor has gone so quickly.

December was an incredibly busy month with various Christmas concert invitations, lunches, parties and of course the extremely successful Christmas Extravaganza and light switch on. A big thank you to everyone who donated to the Christmas Present appeal which meant that a number

of children across the town were able to open presents on Christmas Day.

January was slightly less hectic, with just the HMS Brazen remembrance service at St Michaels, which this year incorporated celebrating our uniformed youth organisations.

In February, I joined other local Mayors and the Chair of Lewes District Council at Waitrose in Lewes to help with the foodbank collection. It was great to see so much support from shoppers and the whole day saw a record busting 7,500 items shared between foodbanks in Lewes, Seaford and Newhaven.

I also visited Just Friends for their monthly tea party and planted a tree with the

Newhaven Tree Wardens on Valley Ponds.

I have also been very lucky to be able to witness the agreement for releasing some of the Towns Fund money for the planned regeneration works, including the first floor of the library and East Side Recreation Ground, and to see the start of some other great projects, including the renovation of the old "Co-Op building" and the plans for the UTC building being brought back into use. Hopefully, soon we will all hear what the planned uses are for some, if not all, of these sites.

My successor will be elected in May and I hope that they enjoy being Mayor as much as I have.

Lesley Boniface

Town Mayor of Newhaven

If you would like to advertise, have a story you would like included in future issues, or an event you would like included in the What's On section, please email steph.georgalakis@newhaventowncouncil.gov.uk or phone her on 01273 516100.

Contents

The Queen's Platinum Jubilee 2022	04	Nippers	16
Newhaven Historical Society	05	Ignite	17
Artwave	06	An Unlikely Warrior in Newhaven Harbour ...	18
CTLA	06	Our Newhaven	19
Lewes to Newhaven Raft Race	06	Twinning Association	19
Denton Community Challenge	07	Just Friends	20
Possabilty People	08	Inroads Productions	20
Newhaven Tree Wardens	09	Citizen Advice	22
East Sussex County Council Library & Information Service	09	Shop Independent	23
Meeching Amateur Dramatics	10	GuestHouse Story Tellers	24
Newhaven Green Centre	10	Newhaven & Peacehaven u3a	25
Hillcrest Centre News	11	Wood Creatives	26
Creative Newhaven Working Group:		In Your Own Words	27
Newhaven Festival 2022	12-13	Newhaven Gig Rowing Club	28
SCDA News	14	Greenhavens Network	29
Newhaven Speedwatch	15	What's On	30-31
Newhaven Bowling Club	16	Newhaven Art Club	Back Page

In the Winter edition of Newhaven Matters, we incorrectly published Newhaven & District Model Railway Club's email and website. It should be newhavendmrc@gmail.com and www.newhavendmrc.com.



The Queen's Platinum Jubilee

On 6th February this year, Her Majesty The Queen became the first British Monarch to celebrate a Platinum Jubilee, marking 70 years of service to the people of the United Kingdom, the Realms and the Commonwealth.

To celebrate this extraordinary anniversary, events and initiatives will take place throughout the year, ending in a four day UK bank holiday weekend from Thursday 2nd to Sunday 5th June.

The bank holiday will provide communities and people throughout the United Kingdom an opportunity to come together to celebrate this remarkable milestone.

Oyez Oyez Oyez!

If you would like Newhaven's very own Town Crier, Jason Ede to issue your party with a Platinum Jubilee Cry, please email us at admin@newhaventowncouncil.gov.uk.

The Queen's Green Canopy

The Queen's Green Canopy is a unique tree planting initiative which invites individuals, organisations, companies and

community groups across the United Kingdom to "Plant a Tree for the Jubilee".

As part of this initiative, Newhaven Town Council will be replacing the dead trees along the High Street with six new trees that will visually improve the look of the area. In addition to this, the Newhaven Tree Wardens will also be planting a commemorative tree.

If you would like to get involved in planting a tree, please visit www.queensgreencanopy.org.

Platinum Jubilee Beacons

In recognition of the Queen's long reign, on the 2nd June at 9.15pm more than 1,500 beacons will be lit throughout the United Kingdom, Channel Islands, Isle of Man and UK Overseas Territories and one in each of the capital cities of Commonwealth countries.

Various towns and villages across East Sussex will be taking part including Newhaven, so please look out for information on our social media pages and website.

For more information on other places that will be lighting

a beacon or how you can take part, please visit www.queensjubileebeacons.com.

At 2pm local time Town Criers across the UK and Commonwealth have been asked to undertake the Proclamation announcing the lighting of the beacons later that evening, so listen out for Newhaven's Town Crier's announcement echoing around the town!



Hosting your own Jubilee party?

The UK has a long tradition of street parties to celebrate jubilees and other national events, so if you would like to get involved, please visit www.platinumjubilee.gov.uk/get-involved-with-the-platinum-jubilee to get ideas and support. Don't forget to take photos and send them to us!



Newhaven's Royal Visitors

Newhaven has had many a royal visitor in the past, from King Louise Philippe of France on 3rd March 1848 who stayed overnight at the Bridge Hotel on his way to London in exile from France to Princess Anne who visited St. Michael's church and the coastguard station on 15th September 2020. On 7th June 1931 the

Duke of Kent christened the lifeboat Cecil and Lilian Philpott and in 1959 the Duchess of Kent christened the lifeboat Kathleen Mary.

Possibly Newhaven's proudest visits have been from the Queen and Prince Philip. In 1962, the Queen met members of the Newhaven RNLI followed by a visit to the Searchlight home and again their visit to Newhaven in 2013.

NEWHAVEN CELEBRATES

Newhaven has not been slow to celebrate our monarchs' coronations and jubilees, from Queen Victoria and George V to our present Queen.



▲ Queen Victoria's Diamond Jubilee. Celebration outside Bannisters.



▲ George V Coronation 1910. Italian Gardens Peacehaven.



▲ Queen's Silver Jubilee 1977 Southdown Road.

The Queen's Platinum Jubilee



The Historical Society wish to add to their collection of photographs of the above events. If you have any photographs of royal visits to Newhaven or local celebrations of coronations and jubilees, we would be pleased to make copies of them at the museum when it opens in April.

On Friday 3rd July, to celebrate the Queen's platinum jubilee, Newhaven Museum will be displaying photographs of royal visits to Newhaven and photographs of local celebrations and street parties. The museum will be open from 11.00 am to 4.00 pm on that day and entry is free.

The museum re-opens on Tuesday 5th April until Saturday 29th October.

Opening times 11.00am to 4.00pm on Tuesdays, Wednesdays, Fridays and Saturdays.


Newhaven Historical Society needs your help!

Do you have a few hours you can spare to help at our museum, based at Paradise Park?

We have volunteering opportunities for Museum Stewards – just 2.5 hours a week. It is a great chance to meet and help people and to learn about Newhaven's fascinating history. No experience necessary as full training will be given. We also have opportunities to help with maintenance, archive and artefact administration and displays and exhibitions. If you are interested or want more information, please email Marcia at mahoneyball@sky.com.

ART WAVE

Artwave Festival
3rd – 18th September

 www.artwavefestival.org

 @artwavefestival

 @artwavefestival

Artwave is the annual festival of artists and makers in the Lewes District. Every year hundreds of creatives exhibit in Newhaven, Seaford, Lewes and the surrounding villages. This year Artwave will run from 3rd - 18th September, so save the date to discover new work, meet artists and makers, and buy directly from them.



THE LEWES TO NEWHAVEN RAFT RACE IS BACK FOR 2022!

When:

Sunday 31st July – Time 14:40

Where:

Raft race starts from Malling Rec in Lewes (by Tesco) and finishes at Newhaven Marina

How:

Build and decorate a raft that floats and fits under bridges (max height 6'6")

Why:

To have fun and raise money for a good cause of your choice

Theme: Party Time

No. of crew: Min 3; Max 12

Entry Fee:

£75 (up to 4crew);
£100 (5 crew and above)

Prizes For:

Fastest Time / Most Devious Means / Best Names / Best Decorated / Last One Home / Contractors Cup / Environmental Champion

Application Entry Deadline:

30th June 2022

Programme Entry Deadline:

14th July 2022

We will be supporting 2 charities this year: RNLI Newhaven and Sussex Search and Rescue.

Please contact lewesrafttrace@gmail.com to get an application form.

For updates, follow us at [@lewesanddistrictroundtable](https://www.facebook.com/lewesanddistrictroundtable).



CTLA
TRANSPORT FOR YOUR COMMUNITY

CTLA is an award winning charity providing affordable, accessible transport to the residents and groups of the Lewes District and Surrounding Areas

Join us in April!
"Travel Club
Easter Lunch"
Contact CTLA to book!

Our services include:

- Dial A Ride
- Travel Club for days out
- Community Group Hire
- Community Shopping Service
- NEPT – Non-Emergency Patient Transport
- Scheduled Bus services

Join "The CTLA Car Boot"
On
Saturday 21st May
The Dell, Peacehaven,
Booters 8.15
Buyers 9am

Membership is **free** and joining is easy – Call **01273 517332** and speak with one of our friendly

Customer Service Advisers or contact us via our Website on www.ctla.org.uk



Follow us on   

Membership subject to qualifying criteria

Community Transport for the Lewes Area – registered charity 1110215 – company with registration 04409570





DENTON COMMUNITY CHALLENGE 2022 DO IT FOR DENTON!

This year's Denton Community Challenge has been named 'Do it for Denton' by one of the local schoolchildren who entered the competition to design the logo. The all-inclusive family fun day will be held on Saturday 11th June at Avis Road Recreation Ground in Denton, Newhaven from 1pm – 5pm.

This will be the 10th Challenge and is always well supported by many local families and businesses.

There will be all the usual fete attractions including a wide variety of stalls and a licenced bar, plus a BBQ kindly provided by the local 2nd Denton & South Heighton Scouts. Children can let off steam on the trampolines, bouncy castle and climbing wall, while a programme of events in the arena will keep everyone entertained. Sporting activities of all sorts will again be promoted on the day and children can have fun

taking part in some or all of these sports challenges. The aim of the day is to provide a fun and inclusive day for families to enjoy and also to raise awareness of the many sporting groups in our locality. And when it's time to calm down a bit they can have their face painted and enjoy an ice cream!

Teas, coffees and delicious cakes will be on sale in the hall, where you can also browse around the craft fair selling locally made arts, crafts and produce. The Grand Raffle will be drawn later in the afternoon and for the first time since 2019 the grand Tug of War is back, finishing the day on a high!



Email dentonchallenge@gmail.com for more information on the event or check out our Facebook page - www.facebook.com/DentonCommunitychallenge.

Denton Community Challenge is organised by a committee made up of Denton Church and the James Daniels Memorial Foundation and is run by local volunteers.

NEWHAVEN HAS A SPECIALIST ADVICE SERVICE FOR PEOPLE WITH MS

What do Jack Osbourne, actress Selma Blair and Nic Chapman of Pixiwoo have in common? You might not know it to look at them, but they all live with MS (Multiple Sclerosis).

MS is a condition that affects your brain and spinal cord. In MS, the coating that protects your nerves (myelin) is damaged. This causes a range of symptoms like blurred vision and problems with how we move, think and feel. Once diagnosed, MS stays with you for life, but treatments and specialistsⁱ do help people to manage the condition and its symptoms.

The MS Society estimate that there are over 130,000 people with MS in the UK and that nearly 7,000 people are newly diagnosed each yearⁱⁱ.

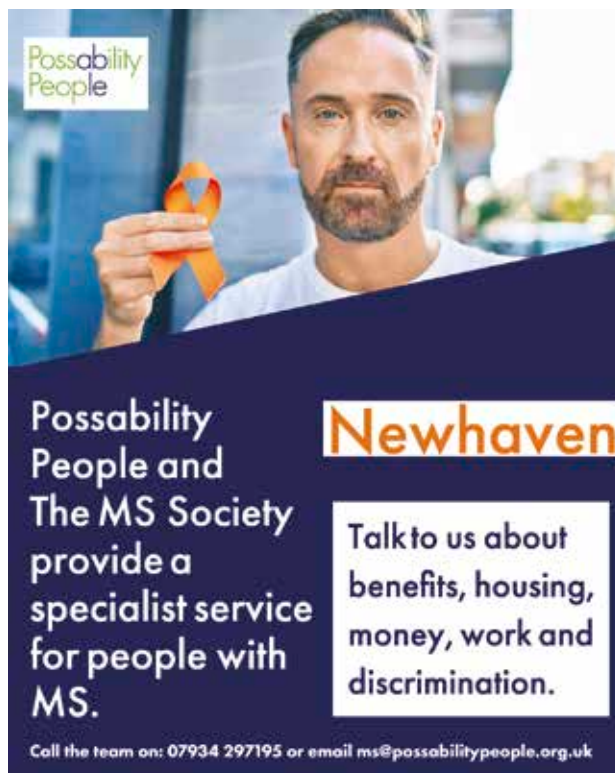
Dealing with the physical effect of MS is one thing, but for many people, it might also lead to a world of uncertainty and complexity around money and finances, housing, work and even discrimination.

At Possability Peopleⁱⁱⁱ we have a specialist advice service for people who live with MS. The team are experts and understand things like what benefits are available to you if you have MS. They can provide support with lots of issues to do with your situation, including filling in forms for benefit applications. If you are turned down, they can even support you through the appeals process. This involves asking for a mandatory reconsideration, and then going to an appeal.

Since the service began in 2018, we have helped 446 people, but only a handful of these are from Newhaven, and we'd like to encourage anyone living with MS, or who has family or friends who do, to contact us if they have any questions or want advice.

One of our service users said:

"We wanted to let you know that the PIP application was successful, with the award being for the higher component in each category,



Possability People

Newhaven

Possability People and The MS Society provide a specialist service for people with MS.

Talk to us about benefits, housing, money, work and discrimination.

Call the team on: 07934 297195 or email ms@possabilitypeople.org.uk

which is wonderful news. We are so grateful for all of your time and help with this Chris, it is very much appreciated."

We provide advice on all disability benefits including Personal Independence Payments, Employment Support Allowance, Universal Credit, Carer's Allowance and Attendance Allowance.

All our Advice Centre staff have received training on MS as a specific condition.

We can be contacted by email: ms@possabilitypeople.org.uk or by phone:

Office number: 01273 894040 or mobile: 07934 297195.

Our office hours are 10-4 Monday, Tuesday, Thursday and Friday. If no one answers please leave a message on the answerphone, including your phone number and we will get back to you.

You can find out more about Possability People on our website at www.possabilitypeople.org.uk.

i <https://www.mssociety.org.uk/about-ms/what-is-ms/do-i-have-ms>

ii The MS Society

iii Possability People is a local charity that supports disabled people and people living with long term health conditions to live independently, with dignity and without prejudice.



Newhaven Tree Wardens

Making Newhaven green and leafy



Hello again Newhaven & Denton!

Well, we seem to have come out the other side of Covid now and even with having to comply with the restrictions of the last two years, the Newhaven Tree Wardens have been out planting trees and shrubs again with the aim of cheering people up and improving area. We've added

to the existing sites along Avis Close, Powell Gardens & The Drove with dog roses, sloes and sea buckthorn so that come the Springtime, there will be a lot more colour and scent. The photos don't look much yet but keep an eye out for the changes. And, at Valley Ponds, we've recently planted some trees to provide Spring and Autumn colour for everyone's enjoyment and well-being.

With this being the Queen's jubilee year, we wanted to mark the occasion. So, we are hoping to improve the Travel Interchange site at the railway station, bus stop and port entrance, that very tired old bit of grass that is currently so unwelcoming! Watch out for a planting and unveiling date in the Summer.

East Sussex County Council Library and Information Services



THE EAST SUSSEX CHILDREN'S BOOK AWARD

Delivered by East Sussex Library and Information Service for schools and families in East Sussex, this scheme aims to promote reading for pleasure to children at the upper age of primary school (8 – 11 years). Read and enjoy our shortlisted books then vote for your favourite to win. There are competitions to enter too! Find out more at www.eastsussex.gov.uk/escba.

NEWHAVEN LIBRARY

- Homework and Activities Club for Primary School at Newhaven Library: Tuesdays 15.30 – 17.00 (Term time only).
- We are also looking for a volunteer to help with this weekly event. Call 0345 608 0196 for details.
- Rhymetime: Thursday 10.30 – 11.00 (Term time only). Aimed at around preschool age. Call 0345 608 0196 for details.

I.T. FOR YOU

Available at Battle, Bexhill, Crowborough, Eastbourne, Hampden Park, Heathfield, Lewes, Rye, Seaford and Uckfield Libraries.

Need help with an important task using a computer? Or maybe you want to learn how to use a computer or improve or refresh your computer skills?

We are offering free 60-minute one-to-one sessions with our volunteers. We can help with email, job searching and applications, CVs, Universal Credit, social media, Microsoft Office, accessing NHS services online and more.

Our sessions are socially distanced and contactless. To ensure social distancing, we cannot use your laptop, tablet or smartphone. We will provide a PC in the Library.

Call 01323 463759 to book your free session or find out more.

IT For You | East Sussex Libraries (spydus.co.uk).

Meeching Amateur Dramatics Presents

HAGGARD

For their next production, Meeching Amateur Dramatics (MAD) will be taking you back to the Regency Period, a colourful and turbulent time in our history.

Set in the 18th Century 'Haggard' tells the story of Squire Amos Haggard, constantly hard up, lecherous, dishonest, and drunk, conceived and brought to life by Eric Chappell of 'Rising Damp' fame.

Haggard is assisted by Grunge, his hapless but loyal servant; and his son Roderick, both of whom are always drawn into Haggard's schemes. The three of them blunder their way through a series of misadventures including a wedding, a brush with pirates, a duel, and the plague! With its parallel to 'Blackadder', this comedy moves along at a fast pace.

MAD will be staging this production at Meeching Hall, Fort Road, Newhaven on four consecutive days: **Thursday 31 March, Friday 1st April, and Saturday 2 April all at 7.45pm and a matinee on Sunday 3 April at 2.30pm.**

Tickets are £10 (concessions £8) and are available from Seaford Tourist Information

MEECHING AMATEUR DRAMATICS, PRESENTS

HAGGARD

A regency period comedy, by Eric Chappell (Rising Damp)



Roderick



Haggard



Grunge



31ST MAR, 1ST & 2ND APR - 7.45 PM, 3RD APR 2022 - 2.30PM
MEECHING HALL, FORT ROAD, NEWHAVEN, BN9 9QQ
Tickets £10 (Concessions, £8)

From Seaford Tourist Information Centre
37 Church Street, Seaford, or Tel 01323 897 426
Or online at: www.meechingamateurdramatics.co.uk

Centre, 37 Church Street,
Seaford, or Tel 01323 897
426, or online at www.meechingamateurdramatics.co.uk or by following the QR code.



Newhaven
Green
Centre

UPDATE FROM THE NEWHAVEN GREEN CENTRE

There have been some exciting developments from Newhaven Green Centre in recent months.

In November, we launched a Crowdfunder campaign to raise money for premises, successfully raising over £6,000 including £2,500 match funding

from East Sussex County Council. Thank you so much to everyone who donated!

This money means that we can actively look for premises (and we hope to have something established by the time of the next publication). As soon as we do, we will be able to offer information & advice, and accept difficult-to-recycle goods for recycling. We will also start stocking a 'lending library', where you will be able to borrow items such as a travel cot, camping and party equipment, rather than buying them.

We'll also be teaming up with Newhaven Uniform Bank to run stalls at schools and community events, to share unwanted but still wearable school uniforms, as well as other items that have been donated.

So, please get in touch if you'd like to volunteer, want to know more about what we're up to, or want to join our mailing list and receive our weekly tips.

www.newhavengreencentre.com
info@newhavengreencentre.com
www.facebook.com/newhavengreencentre



HILLCREST CENTRE NEWS

WE'VE BEEN BUSY AT THE HILLCREST CENTRE OVER THE LAST FEW MONTHS

THE HILLCREST CAFÉ

The Hillcrest Café has had a makeover and is now serving roasts on Mondays for £8, and a choice of lighter meals every weekday for £5, which include Anita's delicious quiches, soups, salads, sandwiches, and her signature pork and apple roll, plus desserts at £4. Bacon rolls are available in the mornings.



THE HILLCREST CAFÉ GALLERY

The Hillcrest Café Gallery will continue as an exhibition space for local artists who can display work for a month at a time. If you would like to submit a piece of art, please send it as pdf, including a description of the project and your details.

VOLUNTEERS

We're always looking for volunteers for the café, people with building, maintenance and other practical skills, and more trustees. If you feel you have something to offer, please get in touch.

DISABLED ACCESS

This is a top priority. We are awaiting the results of a funding application and getting quotes to make the heavy new toilet fire doors self-opening.

NEBULA

You are not alone. The Nebula, a self-funded, FREE mental health support group run by Pinky meets every Monday at 2pm (except bank holidays and Christmas) with free tea, coffee and treats. What is spoken about is confidential and there are check-ins between meetings, and sometimes coffee meets or walks. No need for an invite or a referral. Just come along.

You can contact us about any of the above at: info@hillcrestcentre.co.uk.

A SUCCESSFUL FIRST SOUP AND SOCIAL!



Thanks to everyone who attended Hospitable Environment's first 'Soup and Social' event at the Hillcrest in February. It was great to see so many friendly faces of all ages and backgrounds sharing ideas, conversations and creating a community doodle around the question 'what makes a

hospitable environment for us, our families, our town and our planet?'

Together we ate bread and soup made largely from ingredients donated by the Havens Food Coop based at the Havens Community Hub in Denton. They redistribute perishable and surplus food from local supermarkets, feeding local families who are experiencing food insecurity and diverting tons of waste from landfill in the process.

This was the first evening of its kind hosted by Hospitable Environment, the community arts collective behind the earth oven at the Tide Mills Project 2021. Our hope is that it will be the first of many. We plan to run these events on a monthly basis, building a 'do-ocracy' of community-minded people, and sharing news of local groups and events. All over a free shared meal.

Come and join us at our next one in April, where we will be discussing the past, present and future of creativity in Newhaven and the surrounding area.

To get in touch or to stay posted on upcoming events follow us on Instagram @ [hospitable_environment](https://www.instagram.com/hospitable_environment) or email a.hospitable.environment@gmail.com.



Introducing the Creative Newhaven Working Group and its work



NEWHAVEN FESTIVAL

Newhaven has a new place for discussion and action on all things creative and cultural. The Creative Newhaven Working Group (CNWG), which is chaired by Towner Eastbourne's director Joe Hill, was formed in early 2021 by the Newhaven Enterprise Zone. The group comprises individuals and organisations, from in and around Newhaven, with an interest in developing the town's cultural offer. If you'd like to find out more about the group, check out the webpage newhavenenterprisezone.com/creative-newhaven or email creative@newhavenenterprisezone.com if you'd like to get involved.

The CNWG has put together a Cultural Programme for Newhaven in 2022. The programme aims to support some of the town's amazing creative people and organisations, to put on events and activities in the town, from spring to the end of September 2022. The cultural programme is the first step towards a

community-led approach to arts activity in the town which, we hope, will lead to lots more events and opportunities to take part in culture over the coming years.

This year's programme will include several strands and will provide support for new projects as well as established community arts organisations. The programme will help **Newhaven Art Projects (@Newhavenopencall)** to open a year-round pop-up gallery based on the fantastic work they do with the annual Open Call exhibition. There will be a big increase in the number of exhibitions and workshops and plenty of opportunities to get involved throughout the year.

Since 2018 **Newhaven Festival (@newhavenfestival)** has been a focus for celebration, amazing arts experiences and helpful advice across the year. This year they will run a brand-new pop-up venue on



the Community Courtyard at the Sidings in September, which will lead to loads of showcase opportunities for local talent and be a great place to get together and see a show.

There will be an exciting new competition, that everyone in Newhaven can get involved in, to win the chance to put events on at the Sidings in the summer. Later in the year look out for pop-up artworks that will splash colour around the town. Plus, people in and around Newhaven have been applying to a new arts awards fund, that the Newhaven Enterprise Zone set-up, which will support more events and activities as the year unfolds.

Many of Newhaven's community spaces will benefit from the increase in arts experiences the programme will generate, including the Hillcrest Centre, who have already hosted several preparatory sessions. Alongside the programme there will be opportunities for local businesses to showcase some of the amazing services and products that are produced in the town. The idea is that this year's activities will test and explore what's possible and popular in Newhaven, with a view to building on successes and learning from mistakes, to develop more activity in the town from 2023.

We will be partnering with the Sussex Community Development Association, Hospitable Environment and Haven Young

Creatives (search Safer: Haven Young Creatives on YouTube to see the Haven Young Creatives film 'Safer') to make sure Newhaven's young people are a particular focus of the programme. If you are under 25 and want to be involved in making things happen in Newhaven, look out for opportunities to participate in and devise projects and get in touch! The community will be consulted along the way with group sessions designed to get feedback and we will start to establish structures for more grassroots involvement.

Newhaven's Creative Producer, Nick Stockman, who will deliver the programme on behalf of the Enterprise Zone, says,

"I'm really looking forward to working with so many of the talented people in Newhaven to produce events and activities that the town can enjoy and be proud of."

The cultural programme will sit alongside lots of other shows, installations and events by Newhaven's creative practitioners that the CNWG will help to promote, so it looks like being a bumper year for Newhaven! Look out for more news and information in the summer issue of Newhaven Matters!



For more information and to get involved, whether you are an individual, community organisation or local business, contact Nick Stockman at creative@newhavenenterprisezone.com and follow [@creativenewhaven](https://www.instagram.com/creativenewhaven) on Instagram and Facebook, and [@createnewhaven](https://www.twitter.com/createnewhaven) on Twitter.



NEWHAVEN FISH FESTIVAL AND JUBILEE CELEBRATION PARADE 2022

Everyone is welcome to the Newhaven Fish Festival on 25th June at West Quay, from 10am to 3pm and free of charge!

This annual community event celebrates the fishing industry in Newhaven and is an opportunity for us all to come together and enjoy the day! The Queen's Platinum Jubilee

gives us a double celebration this year and we are looking forward to a series of creative workshops planned for the lead up to the festival.

We are also looking to give local small businesses an opportunity to showcase their stock or services and are encouraging local businesses to be involved, whichever way that they can. Keeping things local and encouraging people to shop locally.

In addition to the day, there will be creative sessions for local people to create costumes and props for the Children's Parade, which we are hoping will be bigger than ever!

All are welcome and there will be much to enjoy, activities for all ages, displays of locally caught fish, food preparation and cookery demonstrations, children's entertainers, live music, art and craft activities, bouncy castles, local artist displays and sports activities.

For more information, call 01273 517250 or email Michelle.Hocking@sussexcommunity.org.uk.

JOIN US IN THE KITCHEN!

GSA Kitchen is an exciting new project based on Denton Island, where you can learn more about food and cooking skills while having fun! To join the project, you will need to be unemployed or economically inactive and live in Lewes District. As well as learning to cook tasty, healthy meals, the team will offer support with practical employability skills to help you into the world of work.

Call GSA Kitchen on 01273 516347, email SCDAEmployability@sussexcommunity.org.uk, or see our website www.sussexcommunity.org.uk/our-services/employment-support/gsa-kitchen to find out more.



SEAHAVEN COMMUNITY FOOD'S NEW ELECTRIC VAN HITS THE ROAD

Seahaven Community Food, part of Sussex Community Development Association (SCDA), has been looking for a way to transport food between their two 'pay as you feel' community supermarkets without increasing their impact on the planet. Now they have a solution! Thanks to funding from Bupa, Sainsbury's, Newhaven Town Council and Peacehaven Town Council, the SCDA project has been able to lease a state of the art electric van to transport supplies, collect donations and deliver food parcels - while keeping emissions low.

Over 120 people a week access food through Seahaven Community Food projects each week - at Newhaven and Peacehaven Community Supermarkets or via emergency food parcels.

The electric van will also be used to support other projects at SCDA, including our charity shops in Newhaven and Lewes, and 'Recycle', a project based on Denton Island, a social enterprise that refurbishes bikes and sells them on.

For more information about the Community Supermarkets or Seahaven Community Food, contact food@sussexcommunity.org.uk or see our website www.sussexcommunity.org.uk.

get more
confident



improve
well-being

develop
new skills

Are you unemployed and need support to move forward in life? Living in Lewes or the Havens?

Our dedicated adviser can support you to improve confidence, well-being and, if you choose, access work, training or volunteering.

Our projects can help...

- Support families to feel stronger
- You plan for the future
- Meet new people
- Connect with your community



"I couldn't have done it without the help I got from the project. I love my job and feel so happy now"

Call us on: **01273 516347**

or email: scdaemployability@sussexcommunity.org.uk

Sussex Community Development Association
Denton Island Community Centre
Denton Island
Newhaven BN9 9BA



The Building Better Opportunities Project is funded by the European Social Fund and The National Lottery Community Fund.

NEWHAVEN SPEEDWATCH

Can you help?

Community Speedwatches are groups of volunteers, supported by Sussex Police, to help keep people safe on our roads.

Newhaven Speedwatch was set up just before the pandemic which has, understandably, limited our ability to carry out much work.

With the relaxation of restrictions, we are now looking for new volunteers to help us make our roads safer.

All new volunteers will receive comprehensive training and safety equipment is provided at each session.

If you are interested in helping us to make Newhaven, Denton and South Highton roads safer then please get in touch with Cllr. Sean Macleod - cllr.sean.macleod@newhaventowncouncil.gov.uk.



COMMUNITY SPEEDWATCH SCHEME

HELP REDUCE DEATH AND INJURY ON OUR ROADS

Community Speedwatch is looking for volunteers to help join our local Community Scheme. Full training will be given for this role by Sussex Police. This is a vital role in helping to reduce anti-social driving and helping to prevent death and injury on our roads.

Community Speedwatch (CSW) is a national initiative where active members of local communities join with the support of the Police to monitor speeds of vehicles using speed detection devices. Vehicles exceeding the speed limit are referred to the Police with the aim of educating drivers to reduce their speeds. In cases where education is blatantly ignored and evidence of repeat or excessive offences is collated (even across county borders), enforcement and prosecution follow.

To join please visit: www.communityspeedwatch.org and go to the register tab, choose join an existing group, should you want further information or wish to discuss further please contact:

Steve O'Connell

Email: CSW@sussex.pnn.police.uk
Tel: 01273 404535 EXT: 561330

NEWHAVEN BOWLING CLUB

KEEP FIT, ENJOY THE OUTDOORS AND JOIN
NEWHAVEN BOWLS CLUB IN 2022



We welcome new and existing players to join our team. We have experienced club members to help you learn or improve your game. We play friendlies home and away around the county, daytime league games and a Monday evening club game for those who work during the week. Our #letsplaybowls sessions for everyone can be arranged at a time that suits you during the day, early

evening or weekends. Enjoy the 2022 summer, outdoors in a friendly and Covid safe environment. This year's open day is planned for Saturday May 14th plus our first roll up is due to start on April 23rd. Look out for exciting events for the Bowls Big Weekend from 27th to 29th May. More information about the club and to keep up to date with the latest news can be found at www.newhavenbowlingclub.com.

www.newhavenbowlingclub.com or contact us on 07401663519. We are also on Facebook & Twitter.

The Green, Fort Road,
Newhaven, East Sussex
Website: www.newhavenbowlingclub.weebly.com
Email: nbowlscsocialmedia@gmail.com

President – Alan Burt
Chairman – Jose Baker

This is...



NIPPERS has been running play and Forest school activities in Newhaven since 1973 at various locations around the town. It was established by a group of parents, youth workers, teachers and the police to provide 2 weeks of activities during the summer holidays.

Currently they operate from East Side Social Centre and it is a registered Charity, run by volunteers who promote play and providing forest and beach school activities. It is rated 'good' by Ofsted and caters for children and young people aged 3-17 years. All staff are DBS checked, First Aid qualified and hold suitable relevant qualifications or are in training.

Currently, they run Out of School Activities after school

Monday-Friday 15.00-18.00 hours; children are collected from local schools and brought to East Side, where play, outdoor activities and tea are provided. The playschemes run throughout all school holidays (except after Christmas) 07.30-18.00 hours – you choose the hours you require. All meals and snack are provided, just bring along a water bottle and appropriate clothing. The children and young people do get dirty, because they play out.

NIPPERS runs many free activities and a fun day during the year, as well as providing childcare for working families and for those in education.

For details: e-mail nippers1973@outlook.com; Facebook NIPPERS or phone 07564 452837.



NEWHAVEN'S THEATRE COMPANY IGNITE WOWS AUDIENCES!

There was a buzz in the air at Meeching Hall in the Christmas run up with a hugely successful production of Ignite's *Wind in the Willows*. The children had a great time despite being raised on CGI. An immersive space was created upstairs where drinks, sausage rolls, ice-cream and bunny ears were served whilst the sound of Xanthe Gresham Knight playing the accordion welcomed folk into the space. Her use of other extraordinary instruments was beautiful.

The story may be familiar and whilst the ambience of a traditional story was upheld, there was a delightful dose of traditional pantomime with little nods to rudeness, a 'dame' and a happy ending. There were many moments of delightful audience participation from the obligatory 'boos & hisses', to everyone joining in a Mexican wave.

The audience enjoyed the ways Ignite overcame a small budget with ingenious and inventive use of props. Making the hedgehog costumes from pasta, a car with a Zimmer frame, a cart with a wheelbarrow, and a bottomless boat was ingenious. A cardboard train riding into the audience scattering bubbles over the children, real tree branches, plus projected images depicting local rivers and coastal scenes also brought the story to life.

Local sound and lighting engineer Cliff Dowding (www.mxsoundandlighting.com), surpassed what we thought possible with his use of LEDs, sound system, smoke machines, truss and projections.

The beautifully cast and incredibly talented ensemble of 9, all locally based, rode a tight ship, helped by Sussex University student Jazmin Field who ensured the transitions, props and numerous costume changes (one actress played 7 parts!) ran smoothly. If one could see the bijou space back-stage, they'd surely agree this was no easy task!

The magic of *Willows* was enabled by kind generosity of the local community and

volunteers, from the seamstresses who worked diligently on tailormade badger costumes and weasel outfits, our make-up artist and the generous locals who donated clothing and SCDA who sold tickets for us. When the cast turned on the Christmas lights with the Mayoress it felt so good to unify all aspects of our local community together.

Seeds are sown for our next production 'Gabriel' by Moira Buffini, running 22nd-26th June and 1-3rd July. This award-winning play is set in a farmhouse, occupied by Nazis in the second world war, an exceptional and powerful play with a strong storyline. Keep your eyes on the website www.ignite-theatre.com, ignitefringe on fb and posters to discover ways of getting involved to further the artistic community in Newhaven.

IGNITE THEATRE PRESENTS

Gabriel

BY MOIRA BUFFINI



*Award winning script - prepare to laugh,
be moved and inspired*

WED 22ND - SUN 26TH JUNE - 7.30PM
FRI 1ST - SUN 3RD JULY - 7.30PM
SUNDAY MATINEE - 2PM

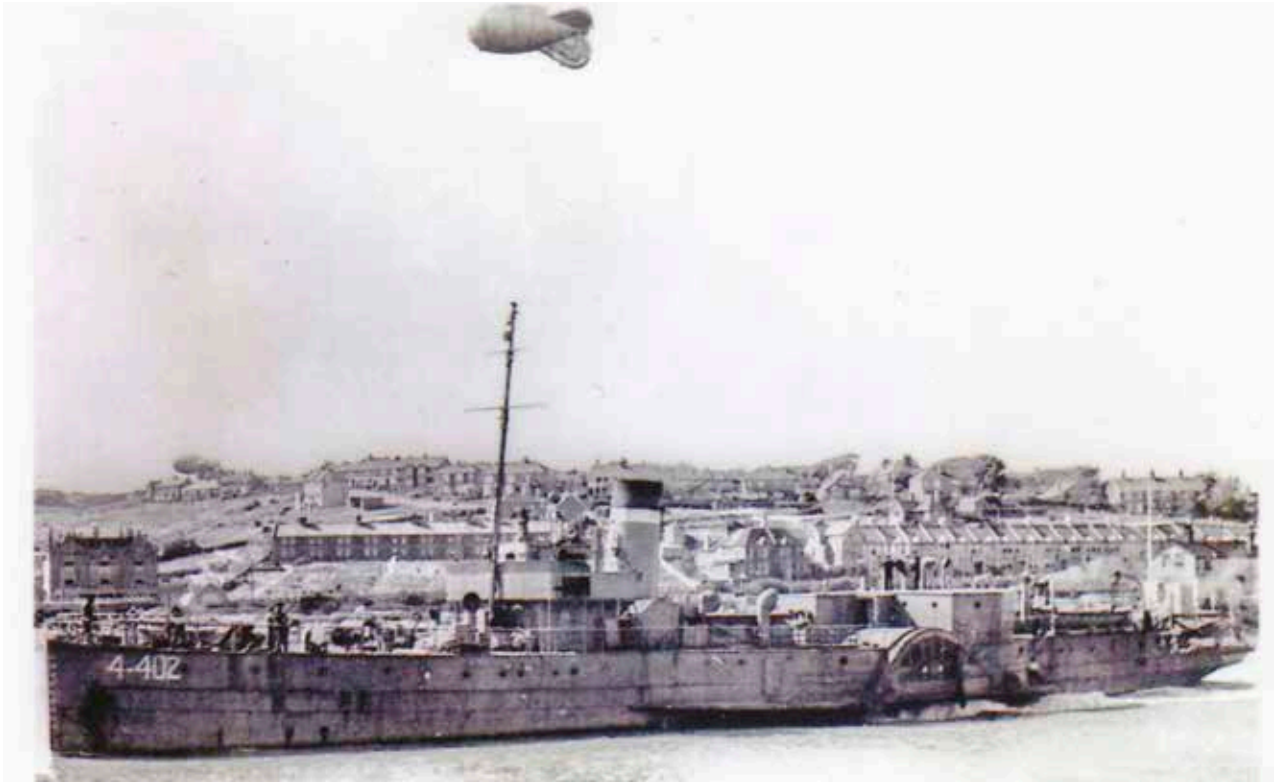
Meeching Hall, Newhaven BN9 9QQ







Tickets £10 from SCDA in Newhaven  CitizenTicket
 or www.citizenticket.co.uk & www.ignite-theatre.com



▲ AA Ship 4.402 Lorna Doone in Newhaven Harbour (Ed Tyhurst - purchased from Mr R Woodmore)

AN UNLIKELY WARRIOR IN NEWHAVEN HARBOUR

By Ed Tyhurst

Many will be familiar with photographs of Newhaven Harbour during the Second World War, home to ships and boats of all shapes and sizes. Even then, when our Royal Navy was considered the largest and most powerful in the world, in times of crisis it could rely on ships not usually considered 'fighting ships' through requisition-pressing them into service. One such "*unlikely warrior*" can be seen in the accompanying photograph to this article, making her way through Newhaven Harbour is the paddle steamer Lorna Doone.

Built by Napier, Shanks & Ball Ltd. of the Clyde in 1891, the Lorna Doone was powered by steam which drove her two paddle wheels, enabling speeds up to 16knts. She measured 220ft long & weighed 410tons. Despite

these seemingly large proportions, like all Victorian passenger ships she was a graceful looking vessel with passenger facilities & comforts both smart and luxurious. In 1898 she was acquired for the Southampton – Isle of Wight service, having before 1898 operated out of Cardiff.

During the First World War the Lorna Doone was requisitioned by the Royal Navy as a Mine Sweeper. Returned to Southampton in 1919, in the 21 years of peace up to 1939, she was one of the best loved 'Red Funnel' steamers of the Solent. Often her decks would be crowded with passengers & tourist excursions, entertained by the on-board band. When war with Germany broke out once more, the Lorna Doone was requisitioned and resumed her Great War role as a Mine Sweeper, pennant number

J.135. In April 1941, she & her crew held their own and fought off an attack by three Dornier 215 bombers of the Luftwaffe. The popular wartime magazine 'The War Illustrated' featured her in a full-page article titled "*How Lorna Doone celebrated her Jubilee*". In May 1942, to meet demand for protection of the Merchant Navy's coastal convoys in home waters, she was converted to an Auxiliary Anti-Aircraft ship. Under pennant number 4.402, she was well equipped for the task-armed with two 2pdr 'Pom Poms', five 20mm cannons & six machine guns, the Lorna Doone could put up a ferocious amount of fire against any raiding Luftwaffe plane. She finished the Second World War as an accommodation ship, returning to Southampton in 1947, unfortunately rather the worse for ware, so reluctantly, she was scrapped in 1948.



OurNewhaven

This view is from Castle Hill, near the Fort. The tug Meeching is seen mid-river, with the bucket dredger Testside. She has just dropped off an empty barge alongside the dredger and is now about to tow the loaded barge out to the dumping ground.

To her left we see the first two pontoons at Cresta Marina and, beyond those, the harbour Watch House, the old Lifeboat House, the RAF Station in Huggetts Field and the Sheet Loft. The North Quay cranes and the Sheerlegs are clearly visible.

At the right are the car ferry berth and the stern of our first car ferry, Falaise. She is in her original first season livery and the metal surround atop the linkspan ramp is still being painted, with lots of primer in evidence. The lighting angle tells us that it's afternoon, but Falaise would always operate the 10.00am sailing. These 'clues' tell us that this must be in the few weeks in May 1964 after she arrived, but before she inaugurated the Newhaven-Dieppe car ferry service on 1st June.

Our Newhaven is an easy to use 'living history' website, with hundreds of pages of memories and well over a thousand images, many exclusive to the site. You can add your own images, stories and memories to the site by creating your own page at www.ournewhaven.org.uk – there's an online tutorial for new users – or you can email them into us at info@ournewhaven.org.uk and we'll create the page for you. Alternatively, you can drop them off at the Town Council Offices in Fort Road. We'll collect them, create the page and return the items to you.



LA
CHAPELLE
SAINT
MESMIN

NEWHAVEN TWINNING ASSOCIATION

Newhaven Twinning Association members have been invited to Newhaven's twin town of La Chapelle Saint Mesmin in May for a long weekend to celebrate ten years of successful twinning.

Members will stay with families in La Chapelle, and the committee there has promised a memorable time.

La Chapelle Saint Mesmin is situated on the banks of the River Loire, in the Département of Loiret, not far from Orléans.

JUST FRIENDS

"farewell to loneliness"

In the Autumn edition of Newhaven Matters, Founder and chairman, Frederick introduced us to Just Friends, a community group he set up to combat the effects of loneliness. Since then, the Newhaven Branch has gone from strength to strength. In the article below, Frederick updates us on what activities they have planned for this year.

"Having started our meetings at Elim Hall, we are excited to announce that we have expanded into The Newhaven Day Club and are starting increase our activities calendar beyond the first and third Monday of every month. So, what are we up to?"

Every first and third Monday from 10am to Noon, we hold a social meeting at the Day Club.

On the second Monday of the month, we have a very friendly walking group and on the fourth Monday there is the lunch group, where we try to eat at a different place each month!"

In addition to our Monday meet ups, we have organised the following:

- 7th April** Coach excursion to Chichester
- 28th April** Bluebell steam railway excursion
- 12th May** Wine Tasting excursion
- 18th May** Coach excursion to Arundel
- 2nd June** Queen's Platinum Jubilee Event

15th June Bodiam Steam Train Excursion

23rd June Excursion to Hythe



For more information, please visit our website just-friends.uk or email us info@just-friends.uk.

To become a member, you must live alone, or be a Carer. There is no membership fee, no age limit and no expectation.

As we say on the leaflet, we are not looking for romance, a partner or a relationship - Just Friends.



TWO PAIRS OF EYES

19TH – 22ND MAY AT 8PM

Inroads Productions will be presenting an immersive ghost story show, Two Pairs of Eyes, at atmospheric Newhaven Fort in May 2022.

40% of the population say they have seen a ghost – does that include you?

What are ghosts – and what does it mean to be haunted?

Like our previous shows there, Home Fires and The Port, the Beast and the Traveller, this will be a promenade production by Sara Clifford/ Inroads, featuring live theatre, music, song and dance. Rooted in Newhaven's local stories, this show will be a shiver up the spine and a celebration of life.

We have been inviting local residents to take part in creative workshops, learning new skills and gaining experience that will lead towards participation in the production itself as ghostly soldiers, nuns, grave diggers and fishermen, singers and drummers to participate alongside our core professional cast.

Will you dare to join us in summoning the ghosts? Will the Drummer Boy come if we call him?

Supported by Arts Council England, Farnham Maltings, Newhaven Fort, the Chalk Cliff Trust, Newhaven Town Council, Lewes District Council and East Sussex Arts Partnership.

Tickets will be free but will need to be booked and Newhaven residents will have priority booking.

If you can't get to the live show, there will be a digital experience you will be able to explore after the show ends.

For information and bookings, please check the website www.inroads.org.uk or email Sara at inroadsproductions@mac.com.

BREWHAVEN



A FESTIVAL OF CRAFT BEER AT NEWHAVEN FORT 30.04.22 & 01.05.22

Taste & buy direct from local producers with live music, DJs, local food, bars and a cafe.

Family-friendly PM sessions: Sat 30th April & Sun 1st May, 1 - 5pm.
Evening session: Sat 30th April, 6 - 10pm - strictly over 18s only



Check visitlewes.co.uk for ticket information and to find out who's taking part

Lewes District Citizens Advice

Q. My energy account is being transferred to a new supplier because the old one has gone under. What will happen? Should I cancel the direct debit to my old supplier? My partner has a disability and we're on the priority services register and we get the Warm Home Discount. Will we still receive these from the new supplier?

A. You still have gas and electricity if your supplier goes out of business. Ofgem announces who is taking over your account. Wait for your new supplier to contact you. But if you don't hear within two weeks, contact them. While you're waiting to hear, log in to your online account if you have one, check your balance and download any bills. Take meter readings (a screenshot is handy), keep old bills, and note your account balance. If you don't have an online account, ask your new supplier for your balance. Don't cancel your old direct debit: your details move to your new supplier. Wait until your new supplier contacts you before setting up a new direct debit. If you're a private customer in credit, your money is protected. Your new supplier must refund any money owed - including accidental direct debit payments to an old supplier. When your new

account is set up, your new supplier puts you on a new tariff. If they don't state that it's their cheapest deal, contact them to make sure you're on the best tariff. Don't switch tariff or supplier until your account has been moved, because it might be harder to get any money owed. You can switch without an exit fee, though it may be best to wait until deals are available. Your new supplier will tell you if you get the Warm Home Discount. If not, this may be a reason for switching to a supplier that can offer it. If you were on the priority services register, for extra services, ask to be added to the new supplier's priority services register. Your new supplier might not be able to get automatic readings if you have a smart meter, and you'll need to take readings yourself. If you top up using an app, this could stop working. Ask your new supplier how to top up.



Anyone requiring support or assistance should contact Citizens Advice on

- Universal Credit Help to Claim line 0800 1448444
- Adviceline 0808 278 7892 Monday - Friday 9am to 5pm.
- Email advice www.eastsussexcab.co.uk
- Chat online to an advisor citizensadvice.org.uk/contact-us.

TRUSTEES NEEDED

Business Planning and Fundraising Support

Lewes District Citizens Advice is looking to recruit 2 volunteers to join our trustee board, which oversees the strategy and governance of our work across Lewes District.

For one of these roles, we are hoping to find someone with knowledge of Business Planning and who could support this function. We are

also looking for someone who has fundraising experience, who would help our District Manager to identify funds and make fundraising applications.

If you would like to make difference to your community, and work in an interesting environment then we would love to hear from you. We ask that you are able to commit

a few hours a month to the bureau and are free to attend quarterly trustee meetings.

For further information, please email districtmanager@lewesca.onmicrosoft.com or telephone 01273 007556 for an informal discussion and an application pack.



SHOP INDEPENDENT A SUCCESS!

Three Shop Independent at Christmas campaigns successfully took place in Newhaven, Lewes and Seaford for three weeks leading up to 22nd December. The aim was to support local businesses to rebuild following the pandemic.

Newhaven has a growing selection of unique small businesses and independent shops in the High Street, along the harbour and tucked

away on the industrial estates. Thirty-six of them participated, generously donating prizes for two unique gift hampers. These amazing gifts were displayed throughout December in Clare Smith Floristry's window. They included, among many other things, speciality food, drink, toys, and numerous vouchers.

Shoppers could collect a stamp card from Dees' Newsagents, Newhaven library and many participating businesses. Five proofs of purchase were necessary and, once completed, the cards

entered a prize draw at Dees' Newsagents.

Newhaven's Mayor, Cllr. Lesley Boniface, picked the winning entries at Clare Smith Floristry on 22nd December. She commented "It has been great to have something to help local businesses, especially during these difficult times. The response has been fantastic".

Two lucky winners each received a super gift hamper, just in time for Christmas.

This campaign was generously funded by the European Regional Development Fund.

La Baguette Shop



For freshly baked genuine French Bread, continental and traditional sweet and savoury pastries, delicious home-made soup and snacks.

Open Monday to Saturday

31 High Street Newhaven • 01273 516129

Are you hiding from your tax & accountancy problems?



Contact Tasker Osman & Co on 01273 512749 to arrange a FREE no obligation meeting with one of our team to see how we can help



Tasker Osman & Co.
Financial Accountants

Website: www.taskerosman.co.uk

Phone: 01273 512749

Email: jon@taskerosman.co.uk

Address: 10 South Way, Newhaven East Sussex BN9 9LL

Partners: Les Tasker FFA/FIPA, FAIA, FFTA & Kevin Osman FFA/FIPA, FAIA, FFTA.
Associate Partner – Jon Sanders AFA/MIPA, FMAAT, FFTA.

The GuestHouse Storytellers



The GuestHouse Storytellers are one of the most successful storytelling clubs in the country, and a non-profit organisation run by a committee of volunteers.

The club meets on the second Tuesday of every month (except July and August) at The Hillcrest Centre in Newhaven, with most of their evenings being open evenings where anyone can book a slot to tell a ten-minute story on whatever theme has been chosen for that month. Tellers vary from the well trained and experienced, to complete first-timers.

These are some of the comments by those having attended their first oral storytelling performance:

"It was incredible. I felt I was right there in the story. I could see the pictures, hear the voices, even smell the flowers and feel the breeze on my skin."

"I was completely transported to a different world. When the story ended it took me a few minutes to come back to the room where we were."

It is hard for an adult to remember the childhood experience of being immersed in a well told story. Why not come along and try it?

April 12th at 7:30pm Storytelling for Adults

The GuestHouse Storytellers present "Women and Power: stories from Orlando Furioso" - told by professional storyteller Marion Leeper with songs by Jessica Law

Meet the peerless knight Bradamante, fighting her way through the dilemmas that face every powerful woman.

Stories based on the Italian romance Orlando Furioso, 500 years old, but as edgy and modern as if it was written this morning. A mixture of knock-about comedy and heart-breaking tragedy, it covers subjects that were important to the court ladies of sixteenth century Ferrara: terrorism, immigration, weapons of mass destruction, and the perfect recipe for fish pie. But underneath the mad adventure and throwaway humour it raises questions about the ways women can and should wield power.

Tickets: £8 in advance through our website: www.guesthousestorytellers.com/coming-soon/book or £10 on the door. Age 12+.

May 10th at 7:30pm Storytelling for Adults

The GuestHouse Storytellers present 'Faraway and Long Ago' (open evening for stories from the floor)

A chance to tell your favourite stories, whether fairy or folk tales, tales of ancient heroes and heroines, goddesses and gods, or of our ancestors, or you could even tell your own life story disguised as a fairy tale or epic.

To book a slot to tell a story (max 10 minutes) contact: rondaarmitage@hotmail.co.uk

Booking not necessary. Tickets: £5 on the door. Age 12+.

June 14th at 7:30pm Storytelling for Adults

The GuestHouse Storytellers presents our very own local professional storyteller, Jamie Crawford, with "The Green Man of Knowledge"

From the year's midnight to the longest day...

After a dream featuring a Green Man figure, on his fifty-ninth birthday in December 2021, storyteller Jamie Crawford decided it was time to have a go at telling a British wonder tale that had long intrigued him. *The Green Man of Knowledge* takes the listener on a magical foray into realms of love and loss, initiation and guidance, delusion and recovery, innocence and understanding. It's the first big new story Jamie has embarked on for a number of years so please do come and join him on a mid-summer storytelling adventure!

Tickets: £8 in advance through our website: www.guesthousestorytellers.com/coming-soon/book or £10 on the door. Age 12+.



Newhaven & Peacehaven u3a has much to offer "young at heart" Newhaven residents. They host more than 30 interest groups ranging from senior keep fit to playing the ukulele via discussion, Mah-jong, gardening, and walking. They are keen to support members wishing to start more groups like the new one for flower arranging.

Monthly Meetings this spring: In April (7th) The Dowager Lady Crabtree will entertain with "How to Grow Old Disgracefully". In May (5th) Ed Tyhurst will inform with "D Day and Beyond – Newhaven: Invasion to Celebration". And for June (9th) members will hear Amanda Elmes on the South Downs National Park. While James Taylor will amuse with "Brilliant British Humour in the Forgotten Art of Picture

Postcards 1840" for the July (9th) meeting.

Monthly Meetings are currently at The Meridian Centre in Peacehaven, as this offers the size of hall needed for the growing membership numbers, but they hope to hold some meetings in Newhaven as well. At each meeting, information is given out about groups and activities. There is always a raffle and refreshments while members socialise. The u3a is happy to welcome potential members to these meetings.

The Friday Lunch Bunch will be out to the Royal British Legion, Seaford in April. The Theatre Group will be off to see Noel Coward's "Private Lives" in April, "Lights Out Over London" in June, "The Best Exotic Marigold Hotel"

in September and "The Cher Show" in November. Members are also looking forward to their day outings to the Bluebell Railway and Sheffield Park Garden in April and lunch in France at Le Chateau des Tourelles in July.

A highlight of the year will be marking the Queen's Platinum Jubilee with a special 3-course lunch at the EBM Centre on June 4th.

This year marks the 40th anniversary of the u3a. The charity has at its heart a self-help ethos where members share expertise and enthusiasms. It is for those no longer in full-time work or raising a family. It gives members the opportunity to meet new people and enjoy a wide variety of interests.

Members are kept informed with monthly emailed updates and a printed Newsletter three times a year. The Phone Pals help to keep those without emails up to date. You can also visit their Facebook page, website <https://u3asites.org.uk/newhaven-peacehaven/home> and YouTube channel.

Although the annual subscription is £15, those joining from March to August pay only £7.50.

You can contact the u3a by at u3anp@outlook.com or phone Sharon 01273 589953 or Sally 01273 513707 (9am to 5pm).





Wood Creatives

Wood Creatives, formerly known as The Hillcrest Woodcarving Club, have gathered in numbers as a result of their recent publicity drive. We continue to improve our equipment and facilities at our workshop within The Hillcrest Centre, Bay Vue Road, Newhaven, BN9 9LH.

Towards the end of 2021 we sadly saw the passing of our most senior member Jim Harman, who had been woodcarving there since 1968. Jim's daughter has made a kind donation of his cherished carving tools to the club and we much appreciate his gesture. The club also received a fabulous wood lathe as a donation from The Barrett family of Seaford after the loss of their son Jono Barrett, a fellow woodturner and mutual creative spirit.

In the two years period that has been affected by Covid, the Wood Creatives have responded to a downturn in membership by reaching out into the local community and forging some new links for the future. Recently, we have been speaking to a number of new

initiatives including Seaford Environmental Alliance, The Skate Society, Wilder Gardens Project and Save Seaford Swifts to name a few. We hope to be in a position to engage and help with future projects using our skills and workshop facilities. Our aim is to forge wider links to other community activities and make lasting relationships whilst welcoming new ideas to utilise our Wood Creative facilities.

This merry bunch of some 30 men & women are growing steadily. As our numbers increase, we have the capacity to open on other days and we may consider evenings and weekends if demand is high enough. We undertake a variety of projects from relief carving to sculpture. Recently we have decided to broaden the range of work and include many other forms of woodworking and creativity with wood. We hope to develop more woodturning activities and perhaps dedicate one day a week purely for this activity – watch this space.

Our club at present operates on Mondays & Thursdays

between about 9.30am & 3.30pm. The current fees are £30 per month, with half price for the unemployed (tea & biscuits are free). For beginners the club provides a good selection of carving chisels as well as hand & electric tools, for use in the club. We also “provide” a secure, safe, friendly and helpful environment with advice & support from experienced members.

During lockdown Wood Creatives was forced to close, reopening cautiously when it was judged to be safe. A few people decided against returning and our numbers fell alarmingly. Happily the current management team (Ted Gordon – treasurer, Jeremy Adams – secretary, Joe Boylan – publicity) have built up the membership to pre lockdown levels. We are however very keen to welcome new members to our club, if interested please pop by on a Monday or a Thursday to look us over & have a guided tour. Otherwise please contact Joe on 07768 331038.

IN YOUR OWN WORDS

Poetry, Prose and Verse from our community

If you are a creative wordsmith and would like us to consider publishing your work in *Newhaven Matters*, please email steph.georgalakis@newhaventowncouncil.gov.uk.

SCISSORS PAPER ROCK

Winter. Pre-dawn, still dark. Dark, and still.
Duvet-snared feet match sleep's fog tangled in my waking brain
as dispersing dreams flicker out like dying moths round a
guttering candle.
Where's that coffee!

White ice-coatings on car-tops.
Unprotected windscreens await scraper and heat-blast from
within.
Frost covers pavements and driveways unkissed as yet by
tyre or sun.

Is that just a hint, a touch, of fox's footfall?
Spectral shadow, winter warrior proudly arrayed in
ermine-like glory,
seeking early breakfast long before screaming gulls wake
and ascend
into formations of ferocious flying-bombs to beak-batter her
under shelter.

Gazing down from the Galaxy, that ultimate predator, mighty
Orion
– astride the heavens, bow fully drawn in eternal expectation –
admires her stalking prowess, one hunter's homage to another.

Starkly naked trees seem asleep but
– in their hidden root-ball wombs awash with amniotic
fungal fluid –
silently compose Demeter's long- yearned-for Symphonies
of Spring,
promises of rebirth, regeneration and hope.

Her orchestras – massed mycological musicians – tune up,
about to pulse out drumbeats across our universal netherworld
heralding unstoppable, exuberant, global resurrection.
L'chaim!

Meanwhile, pity the city's grim, grimy, growing army of homeless
rough sleepers.
Will they survive yet another night of icy ordeal in cardboard-
strewn doorways?
Under our own comfy, cozy, complacent, clean quilts, we –
the lucky ones –
can only imagine their suffering. There, but for the grace...

Shame on us?

Copyright © Peter Black 2022

OYEZ! OYEZ! OYEZ!

WORDS FROM NEWHAVEN TOWN CRYER

**A General Cry for
Newhaven Town VI.**

Oyez! Oyez! Oyez!

Newhaven, Newhaven,
The old town of Meeching,
Where sea birds are crying
And salt air is bracing.

The ferry is docking
Small yachts tack their way
From calm river harbour
To the swell and salt spray.

The old town of Meeching,
This haven, Newhaven.
Its white coastal cliffs
The home of wild Ravens.

Our towns natural tempo
Is set by our river.
Blue vein of Newhaven
Where war ships
endeavoured.

Where lifeboat is stationed,
Fishing boats sail out
To the depths of the Channel
From safe harbour's mouth.

This haven, Newhaven,
Salt water meets fresh.
The sea and the river
The calm and the crest.

God bless Newhaven. God
save the Queen.



Newhaven Gig Rowing Club

Newhaven Gig Rowing Club was established in 2016. From humble beginnings they have gone on to grow bigger and become firmly rooted in the Newhaven Community, with full water access at all times and safe floodlit harbour as well as at sea rowing.

In the summer of 2021 NGRC moved into their new clubhouse which is based at The Sidings on Railway Quay. Lewes District Council has supported the Gig club wholeheartedly with their move to Railway Quay, and future 5 year plans are being implemented to grow further. While NGRC have their gigs moored at Newhaven Marina, the new gig clubhouse has opened up many new possibilities for the club. While social events will be held there, a new indoor rowing training base has also been set up. This means that rowers have opportunity to still train off the water in bad weather, when it is not safe to go out on the water, adding race fitness training at a fraction of the cost of gym membership at no extra cost.

With the doubling in size, and significant demand shown so far this Spring again,

Newhaven Gig Rowing Club needs to add new Gigs to their fleet. While currently they have 1 wooden gig and 1 plastic, they are about to launch a Crowdfunder campaign on Facebook to help buy their next training gig. This will be used for training new members, race crews, as well as new coxes to learn to take the helm and undertake their in-house coxes training program. The aim is also to set up a Juniors section. They are aiming for £12,500. Further information on this will be post to their Facebook page - Newhaven Gig Rowing Club Sussex.

Newhaven Gig Rowing club has invested in its coxes too. With funds secured from Sports England, 4 coxes jumped at the chance to do their British Rowing Club Coach qualifications. NGRC hosted the event with 7 other coxes from other local and farther flung clubs joining them. The course covered cold water survival, safeguarding, first aid, overboard recovery amongst many other technical subjects. They had one and a half days in the classroom and 2 ½ days on the water in very challenging conditions. The 4 coxes will also be assessed in

the near future on how they have put into action what they learnt. This certainly does give Newhaven Gig Rowing Club members and future members reassurance that they are in safe and knowledgeable hands.

Newhaven Gig Club is always open to new members to Join. Please do check out their website to sign up www.ngrc.co.uk/getting-started/ Beginners membership at only £5 and your first row is free, then only £3 per a row after that. Full membership, once passed as competent crew is then £60 a year or £5.50 is paid monthly. Rows are still only £3.00 for full members.

If you would like your Company to have the opportunity to have a training day out for Staff and Managers please email them at admin@ngrc.co.uk.



A NEW "GREENHAVENS NETWORK"



As the winter months come to an end and spring is here Greenhavens Network has reformed and is ready to continue connecting communities with nature.

Our committee has changed, and we have two new coordinators, Jessie Rodriguez, who will continue her fantastic Wilder Gardens Champions programme and training and Miriam Thundercliffe, who will be administrator and point of contact for training and supporting local groups. Both are local mums, who are committed and passionate about community and nature.

Although the last two years have been tough, our love for nature has increased. The vital need to create wildlife corridors that both increase biodiversity and give us better mental and physical wellbeing is essential for all. As the new Greenhavens Network moves forward, our focus is on building on existing groups and connecting community to new opportunities and training.

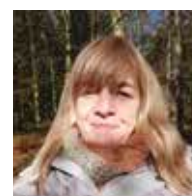
Newhaven has a wealth of history and strong community roots with some fantastic long-standing groups working hard to preserve its green spaces, protecting our wildlife areas and ensuring Newhaven's importance as a port town seeped in history. Newhaven has also seen new groups

created with the fantastic Newhaven Green Centre opening soon, Forest Schools and fantastic community events being held. Community spirit is never lacking in Newhaven and the need for us as a community to preserve our green spaces ever more important.

As climate change accelerates it is important that we can all offer wildlife a haven in our area/garden/park, no area is too small to start a wildlife corridor. These are vital to maintain insect, butterfly and bee numbers and help maintain biodiversity, not to mention the joy and connection to nature it brings us. Jessie Rodriguez will be talking on creating Wilder Gardens at the Greenhavens meeting on the 23/3/22 at Lewes Road Hut, Newhaven 7-9. Do come along to see how you can get involved and training we can offer you.

Greenhaven's Network is a grass roots community group committed to supporting and running workshops and training to serve the community in any way it can. We strongly believe by connecting with groups, supporting and creating events to increase our knowledge and love of nature we can together make an impact.

We have a huge database of existing local groups you can contact and become part of. Whether it's a couple of hours a week or a bigger commitment there will be a group for you so do check out groups on our webpage www.greenhavens.network. Volunteering in whatever way you can is a great way of making new friends, learning new skills and



▲ Miriam
Thundercliffe



▲ Jessie
Rodriguez

improving your mental health and well-being.

We would love to hear from you, tell us what you the community would like to see from your green spaces? What training would you like to enable you to connect to nature more? How can we support you in your project? We want to work for the community with the community so please get in touch at contact@greenhavens.network.

So, from all of us at Greenhavens we warmly welcome you to our new group and hope to forge new connections and see you at one of our events this year.

Here's some dates for your diary!!

23/3/22 - "Wilder Garden Champions" Jessie Rodriguez will talk over the successes from last year, get some dates in the diary for future training of Wilder Garden Champions! For all nature lovers last year's training was fantastic so come along and see how we can help you become a wilder garden champion. Lewes Road Hut. Newhaven. 7pm-9pm

08/6/22 - Annual General Meeting. The Depot Lewes. Speaker to be arranged.

11/10/22 - Martin Allison will be giving us a Fungi Walk! Times and Location to be arranged.

Keep an eye on our Facebook page and website for new dates in your diary.

What's On.

1st April – 30st June 2022

Information is correct at time of going to press. Further details can be found at club websites or www.newhaventowncouncil.gov.uk/events.

CTLA Car Boot Sale

21st May: 9am (buyers at 8.15am) The Dell, Peacehaven
www.ctla.org.uk.

Denton Community Challenge

11th June: 1pm-5pm. Avis Road Recreation Ground, Denton
www.facebook.com/DentonCommunityChallenge.

Denton Table Tennis Club

Every Wednesday: 7pm-9pm and Friday 10am-12pm at Denton Church Hall, Heighton Road, Denton BN9 0LY. All ages and abilities welcome. Contact Rosemary on 01273 611384.

Friends of Tide Mills

3rd Sunday of every month: (9am at beach end of the old Tide Mills Village Road). - Friends of Tide Mills/Newhaven East Side conservation work and litter clearance morning. If you would like to join us and become a Tide Mills guardian, you will be made most welcome. Meet 9.00am Contact Jim Skinner for more info: brianjimskinner@gmail.com.

Denton Women's Fellowship

Denton Church Hall

April 26th: 2.30pm AGM and Mystery Event
May 24th :2.30pm Tax, Care and Toy Boys
June 28th :1.30pm Fish & Chips Dinner

Anyone interested in our meetings would be very welcome. Please contact Ann for more information on 01273 514482

Hillcrest Centre

Please check with groups their sessions are running

Ballroom Dancing

Every Friday: 6.30pm – 8pm
To book phone 01273 476565

Book Club

Every Monday: 7pm - 9pm To book email oldbezzas34@gmail.com.

Craft Market

April 9th: 10.30am-3pm. Pop up craft markets. A combination of crafters from Newhaven Country Market as well as new crafters. A good variety of crafts will be available.

GuestHouse Storytellers - Storytelling for Adults

April 12th: 7:30pm – Women and Power: stories from Orlando Furioso.

Tickets: £8 in advance through our website: www.guesthousestorytellers.com/coming-soon/book or £10 on the door. Age 12+

May 10th: 7:30pm - Faraway and Long Ago (open evening for stories from the floor). A chance to tell your favourite stories, whether fairy or folk tales, tales of ancient heroes and heroines, goddesses and gods, or of our ancestors, or you could even tell your own life story disguised as a fairy tale or epic.

To book a slot to tell a story (max 10 minutes) contact: rondaarmitage@hotmail.co.uk Booking not necessary. Tickets: £5 on the door. Age 12+.

June 14th: 7:30pm - The GuestHouse Storytellers presents Jamie Crawford, with The Green Man of Knowledge.

Tickets: £8 in advance through our website: www.guesthousestorytellers.com/coming-soon/book or £10 on the door. Age 12+

Haven Harmonies Community Choir

Every Monday: 7pm to 9pm. No auditions, no requirement to read music. First session free then £5 every week. For more information visit havenharmonies.wordpress.com or email marianstanley43@gmail.com.

Hillcrest Stitchers

Every Tuesday: 1.30pm – 4pm. To book phone 01273 515259.

Knit and Natter

Monday afternoons: 2pm – 4pm.
Contact: Jackie Gordon 07434 588503.

Life Drawing

Wednesday: 10.30 – 1pm
To book email julianlebas@yahoo.com

Meridian IT

1st Monday of month: 10am-12pm
Newhaven Ukulele Group ("Nukehaven")
6th and 20th April: 7pm to 9pm
4th and 18th May: 7pm to 9pm
1st, 15th and 29th June: 7pm to 9pm

We are a fun and informal ukulele group. Everyone is welcome, from beginners to more advanced players. Just turn up with a ukulele! For more information, call Sue 07745 394220.

The Nebula Mental Health Group

Every Monday: 2pm. A free, peer-led group run by Pinky McLean. No need to book, just turn up.

Open Call Art

Every Thursday: 9.30am – 1.30pm. Drop in

Pilates Classes

Tuesday (Once a month): 11.30am – 12.30pm
To book contact Tash on 07831 120600

StreETFunk

Every Friday: 5.15pm-6.15pm 5yrs+ www.streetfunk.co.uk

Studio in Line (Line Dancing)

Thursday: 7pm - 9pm Contact Territa: 07931 930770

Soup and Social

April – TBC. Email a.hospitable.environment@gmail.com for more information.

Tea dance

Every Thursday: 1.30am - 5pm
To book email graham@grahamstevens.co.uk

Tai Chi

Every Monday: 9.30am - 10.30am
Please book in advance www.taichieffect.com Tel: 07429 007691

Weight Watchers

Every Tuesday: 5pm – 7pm www.weightwatchers.com

Wood Creatives

Monday, Wednesday and Thursday: 9.30am - 3.30pm For more information visit www.woodcreatives.co.uk email: enquiries@woodcreatives.co.uk Or contact Ted on 01323 741878.

Just Friends

Every first and third Monday: 10am to 12pm. Social Meeting at Newhaven Day Club.
Every second Monday Walking group
Every fourth Monday: Lunch Group
For more information visit <https://just-friends.uk/wp/>

Newhaven Art Club

Every Monday: 2pm. Peacehaven Evangelical Church Hall. For more information www.newhavenartclub.co.uk or ring Chris Cook on 01273 875928 or email NewhavenArtClub@hotmail.com

Newhaven & District Model Railway Club

For more information, please visit <https://newhavendmrc.com> or email newhavendmrc@gmail.com or 07715 993675 for Paul Strickland (Club Secretary).

Newhaven & Peacehaven u3a (open to new prospective members)

Please visit <https://u3asites.org.uk/newhaven-peacehaven/home> or www.facebook.com/u3anewhavenpeacehaven for more information.

Newhaven Day Club Spring Clearance Sale

2nd April: 9.30am – 11.30am Newhaven Day Club

Newhaven Fish Festival

25th June: 10am – 3pm. West Quay

Newhaven Fort

2nd June: 9.45am. The Platinum Jubilee Beacon – Lighting of the Beacon

Newhaven Historical Society & Museum

5th April - The museum re-opens for the summer season. Open on Tuesday, Wednesday, Friday and Saturday, 11am to 4pm until the end of October.

5th April: 7.30pm (doors open 7pm) - AGM followed by a talk and show of 'Old Photos of Newhaven' at the Hillcrest Centre. Free to members, £5.00 to visitors.

3rd June - Queens' Platinum Jubilee: Special display of photographs of royal visits and past jubilee celebrations at the museum. Free admission.

7th June: 7.30pm (doors open 7.00). Talk by actor, historian and interpreter Tony Harris, entitled 'My life as Henry VIII – an historical romp at the Hillcrest Centre.

Newhaven Library

Tuesdays (Term Time only): 3.30pm – 5pm. Homework and Activities Club for Primary School

Thursdays: 10.30am – 11am (Term time only). Rhymetime: Aimed at around preschool age.

Call 0345 608 0196 for details.

Newhaven Tennis Club

The Club offers the following sessions and activities to its members and non-members (who are considering becoming members). For more information, please visit www.newhaventennisclub.co.uk.

Newhaven Twinning Association

22nd April: 7.30pm – Quiz at 3rd Newhaven Scout HQ in Fort Road, Newhaven.

24 June: 7.30pm – Quiz at 3rd Newhaven Scout HQ in Fort Road, Newhaven.

Cost is £5 per person. Bring your own nibbles, drink and a glass. Prizes for the winning team.

Reserve with Norman Hopson on 01273 588193 or at norman.hopson@btinternet.com

Newhaven Youth for Christ

Sparks Youth Group for school years 4-6, St Michael's Hall, Newhaven

Youth Club for ages 11-18yrs, St Michael's Hall, Newhaven

Youth Club for ages 11-18yrs, Lewes Road Hut

Newhaven Football Club

For more information, please www.newhavenyfc.org or speak to Sara Alexander Tel: 07763 333998.

Nippers

NIPPERS Easter playscheme and Forest School:

April 4th - 8th and April 11-14th : 7am – 6pm. Various sessions available; all meals provided.

NIPPERS After School Club: 3pm – 6pm. Children are collected from their schools.

April 19 - 29th

May 3rd - 27th

June 7th – 30th

NIPPERS May/June Half Term Jubilee Play Scheme:

May 30th – June 1st : 7am – 6pm

All activities are based at East Side Social Centre, Norton Terrace, Newhaven and the local community.

Quayside Surgery

June 7th : 6.30pm meeting of the Quayside Surgery Patient Participation Group. To find out more details please go to the surgery's website www.quaysidemedicalpractice.nhs.uk.

SCDA Newhaven Youth Centre

The location for all of these is Newhaven Youth Centre, Denton Island, Newhaven, BN9 9BA.

Mondays: Youth Club: 5-7pm (term time and summer holidays). 8-11 year olds

Tuesdays: L.A.S.T. Project: 5.15-6.30pm. A free youth led LGBTQ+ and allies safe space for 12-17 year olds.

Wednesdays: Youth Club: 6.30pm - 8pm (term time and summer holidays). 12-18 year olds

Thursdays: Wellbeing Groups: 5.30pm - 6.30pm – a free 6 week programme for young people 11-18 years old who want to positively improve their wellbeing, confidence and more: (referral needed via youth@sussexcommunity.org.uk).

We can also offer 1-1 wellbeing support on a 6-weekly appointment basis. Contact youth@sussexcommunity.org.uk to find out more.

Fridays: Youth Club: 6pm - 7.30pm (term time and summer holidays). 12-18 year olds

Newhaven Young People's Forum – a voice group for young people to create youth-led projects and make changes for young people locally – 11-18 year olds – contact: nypf@sussexcommunity.org.uk to find out more.

Please contact: youth@sussexcommunity.org.uk to find out more or enrol on to these sessions.

Theatre

Meeching Amateur Dramatics presents Haggard at Meeching Hall, Fort Road, Newhaven

31st March – 2nd April: 7.45pm

3rd April: 2.30pm

www.meechingamateurdramatics.co.uk

Inroads productions presents Two Pairs of Eyes at Newhaven Fort 19th – 22nd May: 8pm

www.inroads.org.uk

Ignite Theatre presents Gabriel at Meeching Hall, Fort Road, Newhaven

22nd – 26th June: 7.30pm

1st – 3rd July: 7.30pm

3rd July: 2pm

www.ignite-theatre.com

'Time Out' Friendship Group

Every Third Wednesday each month, at St. Michael's Church Hall. (Easy access from Second Avenue BN9 9HN)

Tea and chat, art and crafts, board games, future outings, speakers. Donation: £1.00

Contact Gloria on 07926 967359 for further information.

Zara Yoga & Pilates

Meeching Hall, Fort Road, Newhaven

Monday: 11am - Mat based Pilates

Wednesday: 5.45pm - Hatha Yoga

Wednesday: 7pm - Mat based Pilates

Friday: 9.30am - Hatha Yoga

Friday: 11am - Matbased Pilates

Tel: 07532 418542. Email zarano1@msn.com

www.zarayogapilates.co.uk

NEWHAVEN ART CLUB

Newhaven Art Club are a long standing fun, creative group in the area and we are stronger than ever.

We are a club run by its members for the members with local meetings, in person and online if necessary.

We currently meet weekly at 14.00 at Peacehaven Evangelical Church Hall, 24

Mayfield Ave Peacehaven BN10 8RE.

We have fun learning and making new friends among fellow local artists and the club has particularly been a great creative source of comfort, friendship and inspiration during recent times.

We also have inspirational club visits and demonstrations along with demonstrations from professional artists to get our creative juices flowing.

We have a busy program of events and projects including Spring and Summer exhibitions and shows in the area where

members can exhibit and sell their work if they like.

We are always keen to welcome new members whatever ability. You don't have to be Picasso or Monet just keen to give art a go surrounded by supportive friends who encourage you to learn and enjoy art.

Check out the club's new website for more details at www.newhavenartclub.co.uk or ring Chris Cook on 01273 875928 or email us at NewhavenArtClub@hotmail.com.

