



Newhaven Matters

Autumn 2022 // Issue N° 35

**Bonfire returns to Newhaven
– full story on page 27**



© Beverley Chumbley

Welcome to the Autumn edition of *Newhaven Matters*, the free magazine for Newhaven residents produced by Newhaven Town Council.



Contact your local Town Councillor



DENTON WARD



Bill Giles
t: 07720 399189
e: Cllr.Bill.Giles@
newhaventowncouncil.gov.uk



George Taylor
t: 07479 077776
e: Cllr.George.Taylor@
newhaventowncouncil.gov.uk



Charlie Carr
t: 07952 525079
e: Cllr.Charlie.Carr@
newhaventowncouncil.gov.uk



Viki Lees Martin
t: 07943 696244
e: Cllr.Viki.Leesmartin@
newhaventowncouncil.gov.uk



Angela Simmons
t: 01273 515189
e: Cllr.Angela.Simmons@
newhaventowncouncil.gov.uk

NORTH WARD



Steve Saunders
t: 07976 371116
e: Cllr.Steve.Saunders
@newhaventowncouncil.gov.uk



Paula Woolven
t: 07710 426 321
e: Cllr.Paula.Woolven@
newhaventowncouncil.gov.uk



Lesley Boniface
t: 07979 763281
e: Cllr.Lesley.Boniface@
newhaventowncouncil.gov.uk

CENTRAL WARD



Christoph von Kurthy
t: 01273 514540
e: Cllr.Christoph.vonKurthy@
newhaventowncouncil.gov.uk



Paul Boswell (Town Mayor)
t: 01273 515566
e: Cllr.Paul.Boswell@
newhaventowncouncil.gov.uk

SOUTH WARD



Graham Amy
t: 01273 514942
e: Cllr.Graham.Amy@
newhaventowncouncil.gov.uk



Kim Bishop
t: 07793 358790
e: Cllr.Kim.Bishop@
newhaventowncouncil.gov.uk



James MacCleary
t: 01273 514452
e: Cllr.James.MacCleary@
newhaventowncouncil.gov.uk



Joe Emery
t: 07735 061165
e: Cllr.Joe.Emery@
newhaventowncouncil.gov.uk



Marlene Amy
t: 01273 514942
e: Cllr.Marlene.Amy@
newhaventowncouncil.gov.uk



Sean Macleod
t: 07780 944934
e: Cllr.Sean.Macleod@
newhaventowncouncil.gov.uk



Pinky McLean-Knight (Deputy Mayor)
t: c/o 01273 516100
e: Cllr.Pinky.McLean@
newhaventowncouncil.gov.uk



Julie Carr
t: 07757 722927
e: Cllr.Julie.Carr@
newhaventowncouncil.gov.uk

CONTACT YOUR LOCAL MP



Maria Caulfield MP
Unit 6 Villandry, West Quay, Newhaven BN9 9GB
t: 01273 513509
e: maria.caulfield.mp@parliament.uk

AUTUMN 2022



Autumn is now upon us, and I hope you've all had a lovely summer. I for one am keeping fingers crossed for a very mild winter. The Deputy Mayor, Cllr. Pinky McClean-Knight and myself were very honoured to represent Newhaven on 18th/19th August in Dieppe for their annual commemoration - the 80th was a very big event, with French Ministers of State, Canadian politicians and such like.

Coming up, we have some great fundraising events for my chosen charity, Havens Community Hub. There is a fancy dress 007 fun casino night on 22nd October, with many classic games and £2,000

of Newhaven pounds to play with. All profits will go to the charity. If you're interested, book via our website - details in this magazine - and next year will see the return of the Newhaven Pram Race!

Another important date for your diary is Remembrance Sunday - 13th November.

Please come along and pay your respects to the fallen. This will be the 1st civic function without Rev. Martin Miller - we wish him well in his retirement after many years of service at St. Michael's.

Cllr. Paul Boswell
Town Mayor of Newhaven

If you would like to advertise, have a story you would like included in future issues, or an event you would like included in the What's On section, please email Steph Georgalakis steph.georgalakis@newhaventowncouncil.gov.uk or phone on 01273 516100.

Copy deadline for the Winter Issue is 16th November 2022

Contents

Town Council Meetings	04	Meeching Amateur Dramatics	18
Grants available for Local Organisations	04	u3a	20
Dieppe Raid 80th Anniversary Events	05	Keep up with Good Health	21
Wood Creatives	06	Tea time crossword	21
The Arts in Newhaven	08-09	News from Newhaven Green Centre	22
Hillcrest Centre News	10	Newhaven Tree Wardens	22
It's ok to not be ok... The Nebula	11	Community Green Heroes	23
Soup & Social	11	The Great Newhaven Bank Robbery	24-25
Newhaven Art Club	13	Of Booze and Bridges	26
Haven Harmonies	13	Just Friends	27
The Friends of Castle Hill	14	Bonfire returns to Newhaven	27
Praise for Community Rail Volunteers	14	SCDA News	28
Citizens Advice	15	It Takes a Village to Raise a Child	29
Funded Regeneration Projects	16-17	What's On	30-31
Ignite Theatre's Performance of 'Gabriel'	18		



News from your Town Council

Town Council Meetings

As members of the public, you are welcome to attend Town Council and Committee Meetings, either in person or via MS Teams. Information on each meeting will be published on our website, including the MS Teams link as we approach each meeting. For further information, please visit www.newhaventowncouncil.gov.uk or email admin@newhaventowncouncil.gov.uk.

Tue 11th October
Planning & Development

Tue 18th October
Full Council

Tue 25th October
Planning & Development

Tue 8th November
Regeneration & Strategic Development
Promotion, Partnership & Finance

Tue 22nd November
Planning & Development

Tue 13th December
Environment & Amenities
Promotion, Partnership & Finance

Tue 20th December
Planning & Development

Tue 17th January
Full Council

Tue 31st January
Planning & Development
Regeneration & Strategic Development

GRANTS AVAILABLE FOR LOCAL ORGANISATIONS

The next window for applications to the council's discretionary grants scheme for the year 2022/23 is now open.

If your organisation can address one or more of the following criteria then you will be able to apply for either a Small Grant (£0-500), or Large Grant (£501-3000).

- Charitable and non-profit making organisations based in Newhaven. Established for charitable, benevolent, social, cultural, recreational, or philanthropic purposes with a clearly stated social ambition for the community of Newhaven
- National Charitable organisations, but only to local branches where the grant can be seen to directly benefit Newhaven residents
- A Newhaven based club/association/charity/sports club serving a specific section of the community or the community as a whole. A more socially inclusive group will likely be more successful in their application
- A social enterprise which can demonstrate that their initiative(s) will have a positive and sustainable impact on Newhaven
- Able where appropriate, to demonstrate that Child and Vulnerable Adult Safeguarding measures are in place, usually in the form of an appropriate policy that requires those working directly with children and vulnerable adults to be DBS checked and approved

Deadline for submission of applications 23rd October 2022.

Some of the grants recently provided have included:

- 2nd Newhaven Rainbows & 1st Newhaven Brownies
- Hillcrest Wood Creatives
- National Coastwatch Institution, Newhaven Station
- Denton Island Bowls Club
- Family Support Work
- Just Friends
- Newhaven & District Model Railway Club
- Newhaven Baptist Church
- Newhaven Day Club

"Our committee and club members and all those who use our club want to thank you for all the funding and monies you have kindly donated to our club over the last year. We have been able to completely replace the conservatory/snooker flooring so that it now matches the main hall laminate... we also replaced our very dangerous patio garden, making it safe for all our members"

Shirley Harrop, Newhaven day Club Secretary

The council also has a budget for Events Grants each financial year for groups and organisations wishing to run an event in Newhaven for the benefit and opportunity of Newhaven residents, and an application can be made anytime during the year. Contact the council offices on 01273 516100 for an Events Grant Application Form.



DIEPPE RAID

80th Anniversary Commemoration Events



This year was the 80th Anniversary of the Dieppe Raids. Where over 6,000 Canadian, British and American Soldiers left us here in Newhaven on the moonless calm night of the 18th August 1942 and after a bitingly short battle, only a third of them escaped (barely) home. It is known as the raid that enabled us to successfully plan the D Day landings. But the cost was paid in the souls of the Sons, Brothers, Fathers, Uncles and Friends who did not come home again, they are all still there in Dieppe. I was honoured to attend the various ceremonies as Deputy Mayor along with Newhaven's Mayor, Cllr. Paul Boswell.

Unless you have been, I don't think any of us really realise the sheer SCALE of the event over in Dieppe. Heads of state from both France and Canada, Army, Airforce and Navy bigwigs, police escorted convoys from one memorial to another, wreath laying, bagpipes

playing amazing grace (that had me blubbing like a baby) seeing the immaculately kept graves of unknown soldiers, night vigils, beach front ceremonies, speeches, readings, prayers, and theatre from people around the world. Entire French government departments and overseas foundations of young people whose sole mission is to remember the fallen. And remember them they do. Representing our small seaside town, it feels strange to be treated as one of the VIPs.

On Sunday 14th August we had our yearly small, dignified commemoration ceremony, with wreath laying and a small parade in Bridge Street. We were joined by members of the various Armed Forces Associations, the Polish Veterans Association and Royal British Legion, dignitaries from Sussex and Dieppe, local mayors, and officers from the Canadian Forces Support Unit and the US Navy. We were also fortunate enough to have some of the families of the Canadian Veterans – who were present at The Raid.

We would like to express our heartfelt thanks to everyone who took part this year and helped make this special event an extraordinarily special one. Our sincere thanks to the staff at Denton Island Indoor Bowls Club and The Kitchen Garden Co. for providing a lovely venue and fantastic food.

If I do get elected next year, and if I am voted in by my colleagues on the council as

Mayor It will be me overseeing how we remember in 2023.

We must remember, because if we don't? We are doomed to repeat history and that cannot and must not be permitted.

Pinky McLean-Knight
Deputy Mayor



The Brighton and Eastbourne branches of the Royal Engineers association were both present and laid wreaths at Sunday's 80th remembrance service and parade held at the Green Newhaven. The Royal Engineers and the Royal Canadian Engineers are very much the same corps even wearing the same cap badge, which is why their attendance at this service is so important to them in honouring the memory of the lives lost on the Dieppe raid in 1942. These young men left for Dieppe from Newhaven and came from Canada to fight for freedom here in Europe. Their memory and sacrifice must never be forgotten.

Michael Hay, Royal Engineers Association. Brighton Branch

WOOD CREATIVES

"We aim to make from wood something as marvelous as the tree it came from!"

Based in Newhaven, Wood Creatives are a diverse group of men & women who love creating and making things from wood. We are steadily gathering in numbers from Seaford, Newhaven and beyond. We continue to improve our equipment and facilities at our workshop within The Hillcrest Centre, Bay Vue Road, Newhaven.

Our members make items from the wide variety of wood available to us using a variety of techniques. These include relief carving, sculpture, lathe turning, scroll sawing and pyrography – just to name a few. We are always open to new ideas and techniques that broaden the scope for working with the wide variety of timbers available and to include the many craft skills involved in working creatively with wood.

Recently, we have been talking to a number of new initiatives including Seaford Environmental Alliance, The Skate Society, Wilder Gardens Project and Save Seaford Swifts to name a few.



We are fortunate to be able to engage with community groups and help future projects with our skills and workshop facilities. We hope to forge wider links to community activities making lasting relationships and welcome new ideas to our Wood Creative facilities.

We are always keen to welcome new members to our club, so if you are interested, please pop by on a Monday or a Thursday and have a guided tour. Wood Creatives are at The Hillcrest Centre, Bay Vue Road, Newhaven, BN9 9LH.

For further information, please contact Joe 07768 331038 or visit our website www.woodcreatives.co.uk.

CASINO NIGHT

In aid of Havens Community Hub

JOIN US FOR A NIGHT OF FUN GAMBLING

Saturday 22nd October 2022

7pm

Denton Island Bowls Club

£25 per head
- Includes buffet & 2,000 Newhaven Pounds

BLACKJACK, POKER, ROULETTE & BACCARAT

Come dressed as your favourite Bond character
Prizes for best costume & biggest winner of the night

Booking Via
Meeching Estate Agents
or
Newhaven Town Council Offices

Newhaven PRAM RACE

Fun for all the family!

Easter 2023 sees the return of the Newhaven Pram Race. If you would like to enter, please register with the Town Council by calling 01273 516100 or email admin@newhaventowncouncil.gov.uk

To sponsor the event or have a stall on Huggett's Green contact Newhaven Chamber of Commerce office@newhavenchamber.co.uk or tel: 01273 517544

Photographs by Ivor Gillett and Robert Horscraft

Looking for a new castle?

*Sell or Let your
home through
Jarlands this
summer!*



Property listed on all major portals

Professional photography, floorplans & virtual tours

Open 7 days a week

Branches in Newhaven & Peacehaven

Call Jarlands today to secure 20% discount!

jarlands

01273 586222

aria / propertymark

PROTECTED

naea / propertymark

PROTECTED

www.jarlands.com

THE ARTS IN

NEWHAVEN ART SPACE

The Town's New Contemporary Art Gallery

A new contemporary art gallery and project space has opened in Newhaven town centre, at 24 High Street, providing a focal point for contemporary art and enabling free access for everyone to enjoy the best new work from contemporary artists from the region and beyond.

Newhaven Art Space is the brainchild of Helen Turner and Nick Marsh, the experienced artists and educators behind Newhaven Art Projects and the long-running Newhaven Open Call, which has seen dozens of artists exhibit their work at various pop-up locations around the town.

Invited curators and educators will deliver a rolling calendar of exhibitions bringing notable artists to the town, while also offering a programme of art workshops and other events. All this activity will be free to attend and increases access to both art and education, building on the work that

Nick and Helen, together with local artist Nick Bush, have undertaken in the town over the past several years.

The emergence of Newhaven Art Space rejuvenates a high street property that has laid empty for some time, transformed by the artists, with support from local company Boutique Modern, from a shell of a retail unit, into a highly professional gallery space.

The gallery opened in September with an exhibition of work by the founding artists and will be open Thursday - Saturday each week. Visit newhavenartprojects.co.uk to keep updated on the gallery news and full programme of events.

A new temporary exhibition space will open during October in the old Peacocks building in the town square, featuring work from Newhaven residents as part of the Internationally renowned Photo Fringe. Workshops took place over the summer to produce collages on the theme of 'Newtopias'. The collage work will be displayed in the retail unit windows accompanied by a group exhibition in the upstairs space



▲ Nick Marsh *Hullabaloo*

as part of the Fringe. Go to photofringe.org for updates.

These two Newhaven projects and many others are resourced by the Newhaven Enterprise Zone with support from Towner Eastbourne.

Check out the Creative Newhaven webpages on NewhavenEnterpriseZone.com for more information and to find out ways to get involved in the Newhaven Creative Programme, whether you are an individual, community organisation or local business. Be sure also to follow @creativenewhaven on Instagram and Facebook, and @createnewhaven on Twitter to be the first to hear about events and new opportunities.

THE SEA MAGIC EVENT AT THE SIDINGS



In August 600 people enjoyed an afternoon of free performance, activities, and spectacle as producers 18 Hours sprinkled sea-faring

sorcery over Newhaven's latest event site. Kicked off by the shock and awe of the Raven Drummers there was a mermaid in a show globe, the Norcross Dancers, Ignite Theatre, hula-hooping, and the mayor presented prizes for the most mesmerising mermaids. It was a great way to kick-off events on the Courtyard which is available to hire by contacting creative@newhavenenterprisezone.com.



© Phoebe Wingrove



© Kathryn Martin
for Newtopias

PHOTO FRINGE 2022: REAL UTOPIAS

Photo Fringe, the biennial open-platform photography festival, returns for its tenth edition this October.

Independent photography exhibitions and presentations of work selected by Photo Fringe from open call, will show in galleries, pop-up venues and outdoor installations across Brighton & Hove and Sussex, from Worthing seafront to Newhaven Town centre and beyond. At the Photo Fringe website, photographers of all career stages, from recent graduates to established talents, will create digital exhibitions responding to the festival's theme.

Festival Director, Claire Wearn says "Our theme this year is Real Utopias. It's a call to action for Photo Fringe exhibitors and audiences to explore how photography can help imagine a brighter, greener, fairer world".

In Newhaven, the results of summer photo-collage workshops at the Hillcrest

Community Centre will be displayed in an outdoor town-centre exhibition. For Newtopias, local residents working with artist Kathryn Martin have used material from the Newhaven Museum archive collection, personal photographs and found images to reimagine life in Newhaven. Sharing stories and exploring personal ambitions, the project aims to connect the past, present and potential futures of the town and its community.

In the former Peacocks building in Newhaven, photography collective (re)structure will present an exhibition of their work together with a programme of talks and workshops to engage local residents and visitors alike.

Photo Fringe 2022 runs 6-30 October and is supported by by Arts Council England, Art Fund and Brighton & Hove City Council. The Newtopias project is supported by The Chalk Cliff Trust, Creative Newhaven and Lewes District and Eastbourne Borough Councils.

Find out more about participating photographers, exhibitions and events at photofringe.org.



BAR AT THE BANDSTAND

The well attended Bar at the Bandstand took place back in July. Sussex gin, fizz, cider, beer and wine was flowing, against the backdrop of some of East Sussex' finest bands and singers. This event is certainly putting Newhaven on the map, and we can't wait for next year!



NEWHAVEN FESTIVAL

This year's Newhaven Festival has brought a real eclectic mix of events, from talks, poems, dance, and interactive experiences through to walks, dance performances and cabaret, there truly has been something for everyone.

One of those events was Matthew Bourne's world renowned NEW ADVENTURES dance company. In true New Adventures style performed through music and dance, High Tide by Daisy May Kemp and Ding Dong by Sophia Hurdley were lively, characterful, and full of happiness.



HILLCREST CENTRE NEWS

WE'VE BEEN BUSY AT THE HILLCREST CENTRE OVER THE LAST FEW MONTHS

August saw the start of a new monthly Flea Market, reviving - at least in spirit - the old Flea Market at the end of Meeching Road. There were more than 20 stalls with many small local businesses, makers, bakers, craft brewers, plus a car boot sale in the car park. We'll always reserve a few super affordable pitches to help fledgling local businesses get going, and we offer a free pitch every month for community groups or projects to help spread the word. If you'd like a spot contact thestanleyroadstore@gmail.com. Huge thanks to SCDA who helped us with a Small Sparks grant to get the market up and running.



In the cafe gallery we enjoyed a photographic exhibition of Tentative Words Change Everything by Nathan Coley, whose illuminated artwork was at the West Beach earlier in the year. We loved Lightbox



by Gallit Shaltiel through Artwave, and dozens of local residents took part in the Newtopia photo montage workshops during August, using images from the archive at Newhaven Museum (and lots of magazines!) to reimagine the town as they'd like to see it. We're looking forward to seeing their creations at the Newtopias exhibition in the old Peacocks building in October as part of Photo Fringe. Coming up, in November Jo Hunt will be showing her Night Skies in the cafe, and in December there will be a Christmas art sale. Contact kathryn@hillcrestcentre.co.uk if you'd like to be involved.

We hosted several events as part of the fifth Newhaven festival - including the Art Historian and TV Presenter Andrew Graham Dixon, and the inimitable Miss Hope Springs with her 'Ritz to the Pits' musical memoir - and

are looking forward to more evening events through the autumn.

The Hillcrest Cinema is back on the 4th Saturday of the month (22nd October, 26th November), as are our Beetle Drives. Come along with all the family and play this simple and fun game.

We are now hosting a Ukrainian Hub offering weekly activities and support for Ukrainians who are currently residing in and around Newhaven. If you have Ukrainian house guests, please contact info@hillcrestcentre.co.uk to find out more.

Not sure if it's too soon to talk about Christmas, but we're taking bookings for delicious Christmas lunches in the cafe. Get in touch for dates and to book a place at the table.



There's something for everyone at the Hillcrest. Check the website for details and to find out about everything that's going on. We look forward to seeing you soon.

IT'S OK TO NOT BE OK... THE NEBULA

Sadly, in the UK depending on the service you seek, lots of people feel they must reach that 'critical moment' before any real help is offered. Ironically, we are encouraged more than ever before to speak up about our mental health and to ask for help. Yet services are often overwhelmed. So, in 2018, I decided to start a mental health support group. The Nebula.

We are a self-funding group, reliant on donations and offer free, peer led, medium impact mental health support and aim to stop people reaching their tipping point.

As the group is peer led, it means that everyone in that room has a very good idea of how you feel. I have seen first-hand many times over the years how this magic happens. It fills me with immense pride that when people have initially come to the group, unsure of what they would find, they have left us with a weight lifted.

We now have a strong group of 'regulars' who come along and we are getting to a point where

The Nebula needs to grow. However, for this growth to happen we desperately need funding. If you feel you could financially contribute in some way, we have a GoFund me page www.gofund.me/d0f07619.

The Nebula is a drop-in service, therefore if you feel you could benefit from joining the group, please pop along, you'll be made to feel welcome. We meet on a Monday, 2pm until 3pm at the Hillcrest Centre. Free tea, coffee and biscuits provided!

Love Pinky x
Deputy Mayor of Newhaven

SOUP & SOCIAL

Thanks to everyone who came out to our fifth Soup & Social and to see the Nathan Coley photographic exhibition at the Hillcrest Centre in August. We had great fun making pizza for you all and need to say a huge thank you to the Salibi family for making us some delicious mezze to serve.

Coming up soon from Hospitable Environment at Hillcrest, keep an eye out for our next free Soup and Social

evening in collaboration with Creative Newhaven, the arrival of the wood-fired community bread oven, and a new making space where we'll be holding a series of workshops in coming months. Lots of opportunities to gather together, roll up our sleeves and get our hands dirty!

Follow us on instagram @hospitable_environment and look out for our posters to see what's on next.





CTLA
TRANSPORT FOR YOUR COMMUNITY

CTLA is an award winning charity providing affordable, accessible transport to the residents and groups of the Lewes District and Surrounding Areas

Our services include:

- Dial A Ride
- Travel Club for days out
- Community Group Hire
- NEPT – Non-Emergency Patient Transport
- Scheduled Bus services 131, 132, 246, 248, 249

Membership is **free** and joining is easy – Call **01273 517332** and speak with one of our friendly Customer Service Advisers or contact us via our Website on www.ctla.org.uk

Follow us on   

Membership subject to qualifying criteria*

Community Transport for the Lewes Area – registered charity 1110215 – company with registration 04409570

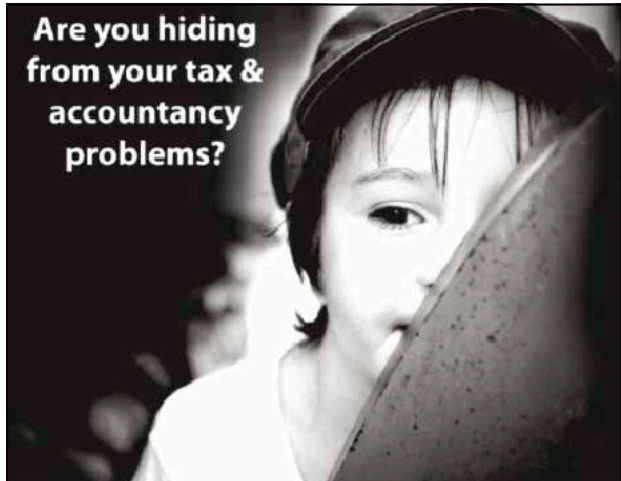
La Baguette Shop



For freshly baked genuine French Bread, continental and traditional sweet and savoury pastries, delicious home-made soup and snacks.

Open Monday to Saturday
31 High Street Newhaven • 01273 516129

**Are you hiding
from your tax &
accountancy
problems?**



**Contact Tasker Osman & Co on 01273 512749
to arrange a FREE no obligation meeting with
one of our team to see how we can help**



Tasker Osman & Co.
Financial Accountants

Website: www.taskerosman.co.uk
Phone: 01273 512749
Email: jon@taskerosman.co.uk
Address: 10 South Way, Newhaven
East Sussex BN9 9LL

Partners: Les Tasker FFA/FIPA, FAIA, FFTA & Kevin Osman FFA/FIPA, FAIA, FFTA.
Associate Partner – Jon Sanders AFA/MIPA, FMAAT, FFTA.



NEWHAVEN ART CLUB AUTUMN 2022

WEEKLY SESSIONS

We are recommencing our fun and friendly weekly in person art sessions every Monday from September 5th at Peacehaven Evangelical Church Hall, 24 Mayfield Ave

Peacehaven BN10 8RE. Art session times are 14.00-16.00 admission £2 inc. tea.

We have an interesting programme and demonstrations and galleries scheduled. We always welcome new visitors to come along and have some creative fun with us.

AUTUMN EXHIBITION

Following the success of our spectacular Spring Exhibition we are holding an Awesome Autumn Exhibition on the 24th-30th October at The Flint Gallery – The Crypt Seaford.

Exhibition is free entry - 10.30am-4pm.

Full information is on our website at newhavenartclub.co.uk or you can contact us via newhavenartclub@hotmail.com.



Haven Harmonies

A Community Choir Based in Newhaven

Well, it is certainly lovely to be singing and rehearsing again each week and catching up with our old and some new friends, with a few new members joining in recent weeks. We've been busy recently working on some new songs for our repertoire including our version of Play Me, a lovely Neil Diamond song and Joker and the Queen, which is a beautiful song by Ed Sheeran, we think our arrangement makes it even more so and we have several more songs being prepared for rehearsal in the coming weeks. As well as learning some new songs we've managed a couple

of performances in recent months. We were honoured to be invited to sing The Commonwealth Song at the Beacon Lighting ceremony to celebrate the Queens Jubilee at Newhaven Fort in June. We also sang a good mix of songs at this years Jubilee Fish Festival, the busiest ever. Our set list included sea shanties such as Blow The Man Down, through to pop songs like Bruno Mars song Count on Me. I think a great time was had by all but I know we enjoyed ourselves.

Looking forwards, we are hoping to be able to get back to performing our sing along sessions at local care and nursing homes, as we miss performing them and I'm sure many of the residents would welcome us back. We're also looking forward to Christmas when we hope to be singing at the Newhaven Christmas

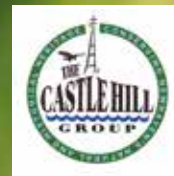
Extravaganza and hopefully at the Meridian Centre Peacehaven.

COME AND SING WITH US...

We rehearse once a week on a Monday evening from 7pm-9pm at the **Hillcrest Centre in Newhaven**. Open to all – no audition required, no need to read music and the **first 'taster' session is free**. If you enjoy what we do and want to join us the weekly subscription is £3 thereafter.

Please contact the Secretary at havenharmoniescommunitychoir@gmail.com for more information.

We sing at special events in the community throughout the year and are available for sing-a-long sessions on request.



THE FRIENDS OF CASTLE HILL

Located on the cliffs at Newhaven, next to Newhaven Fort, the 41-acre Castle Hill Nature Reserve possesses unparalleled views out to sea and is one of the 'hidden gems' of Sussex. The site occupies what was once a late Bronze Age Hill Fort, much of which has long since eroded off the edge of the dramatic 85 million year old chalk cliffs.

Owned and managed by Lewes District Council, these cliffs form part of the Brighton to Newhaven Cliffs Site of Special Scientific Interest,

designated on account of their unique geology and varied natural history. Sitting unconformably on top of the chalk are thick deposits of tertiary sands and clays, approximately 55 million years old. This section of cliff is unique in Europe for the length of exposure and its stratigraphic completeness. The maritime vegetation growing thereon is also very important as it is part of the only example of unimproved grassland on deep tertiary deposits in East Sussex.

A wheelchair accessible path has been built up the hill to an area just below the coastguard lookout tower where everyone can enjoy the stunning view

across Seaford Bay. Benches have been installed in various places.

The Friends of Castle Hill volunteers undertake work parties on the first Sunday of every month. This includes scrub management to maintain and improve flora and fauna diversity and other tasks such as litter picking and step repair. If you feel you may like to help at these events, please meet at the top car park of The Fort at 10.00am. We normally finish about midday. For further information please contact the Chairman, Graham Amy on 01273 514942 or email seahavenpr@aol.com.
Fort Road, Newhaven BN9 9DS
Map Reference: TQ 446 002.

SOUTHEAST COMMUNITIES RAIL PARTNERSHIP CIC



Praise for Community Rail Volunteers

Community rail representatives met in person for the first time in more than two years to discuss progress on bringing people together along the Sussex Downs Line.

Members of the line's steering group gathered at The Sidings bistro in Newhaven for debate and consultation on initiatives at and around the stations from Seaford to Brighton.

The meeting was also a chance for Southeast Communities Rail Partnership to thank the volunteers who have continued

to connect communities with the railway since the start of the pandemic in 2020.

Sussex Downs Line Chair Norman Baker, who is the former MP for Lewes and ex-transport minister, said: "It was great to meet in person once again and to hear about all the progress being made by communities along the line. We were able to thank all the volunteers for their efforts throughout the last two years in keeping our railway stations looking attractive and pleasant."

The group has been meeting online for the last two years although work has continued at stations subject to lockdown restrictions. The previous in-person gathering of the steering group was at Newhaven Town Council's offices in March 2020.

Community Rail steering groups comprise representatives of the train operator Southern, Network Rail, local authorities, businesses, community groups and volunteers. They work in partnership to connect communities to the railways.



Sussex Downs Line community rail group meeting at The Sidings in Newhaven.

Photo Credit: Southeast Communities Rail Partnership

The cost of living is so high now. What can I do?

Prepayment meter customers can request temporary credit from their energy suppliers –they might add this to your meter automatically, but if they don't, you can ask them to do this.

If you run out of temporary credit, speak to your supplier to explain your situation. They may give you extra temporary credit. There may be extra support available if you're disabled, have a long-term health condition, or have children under the age of 5. You'll have to pay back anything extra you get, but you can agree an affordable plan with your supplier.

There's more government support coming from October,

including a £400 payment to help you with your energy bills. If you have a prepayment meter, you'll be given vouchers in the first week of each month from October, via SMS text, email or post. Make sure your energy company has your up-to-date details.

Check you're getting all the benefits you're entitled to - you can use online benefits calculators. On the Citizens Advice website, there's advice on how to reduce living costs and other ways to increase your income.

If you can't afford to buy food, Citizens Advice can help you get a referral for a food bank.

We know this is an extremely

worrying time and everyone's situation is different. Don't struggle alone. If you need further support, contact Lewes District Citizens Advice. on 01273 007557 or email info@lewesca.onmicrosoft.com or call the national advice line.

Anyone requiring support or assistance should contact us on

- Universal Credit Help to Claim line 0800 1448444
- Adviceline 0808 278 7892 Monday - Friday 9am to 5pm.
- Email advice www.lewesdistrictcab.org.uk
- Chat online to an advisor citizensadvice.org.uk/contact-us

TRUSTEE Technology/Digital Change

Lewes District Citizens Advice is looking to recruit a technology volunteer to join our trustee board, which oversees the strategy and governance of our work across Lewes District.

For this role, we are hoping to find someone with knowledge of Technology/Digital Change and who could provide thought leadership on our IT infrastructure/cyber security/digital options and help build and implement this vision.

If you would like to make a difference to your community, and work in an interesting environment then we would love to hear from you. We ask that you are able to commit a few hours a month to the bureau and are free to attend quarterly trustee meetings.

For further information, please email nicolam@lewesca.onmicrosoft.com or call 01273 007556 for an informal discussion and an application pack.

VOLUNTEER IT Support

Lewes District Citizens Advice is looking to recruit an IT support volunteer to help staff and volunteers become fully familiar with our IT systems (including Office 365), help with day-to-day IT issues (for example difficulty logging on, connecting to Wi-Fi etc.) as well as supporting larger IT projects.

For this role, we are hoping to find someone who is passionate about supporting a vital local charity, with good IT skills and a helpful approach.

If you would like to make a difference to your community, and work in an interesting environment then we would love to hear from you. We ask that you are able to commit a couple of days a week to the bureau and are free to attend quarterly trustee meetings.

For further information, please email: businessresourcesmanager@lewesca.onmicrosoft.com or call 01273 007556 for an informal discussion and an application pack.



Update on Funded Regeneration Projects and the Launch of Your Newhaven

Councillor James MacCleary, Leader of Lewes District Council and local councillor for Newhaven: *"After years of working and waiting, we are now seeing our town get the positive investment and energy it needs. Over recent years close to £50m of funding has been secured for Regeneration projects. Lewes District Council has also confirmed its purchase of the former UTC building which has now been renamed Marine Workshops. I'm really looking forward to seeing the building brought back to life by early 2023, with a mix of uses from education*

and training to private businesses and local government services. I want to see it become a real hub of activity for the town alongside the council's redevelopment of the town centre and investment in the adjacent Sidings.

We've also been able to secure additional funding to launch Your Newhaven. This new engagement platform will make sure residents can remain informed and most importantly involved in shaping Regeneration Projects, alongside in-person consultation. Thank you to all who have already signed up and have provided feedback."

Future High Streets Fund (Re-imagining Newhaven) - £5 million

Lewes District Council initially submitted a bid to renovate vacant and underutilised areas of Newhaven Square. A revised business case is currently being submitted to Government, that includes a new project called the Health and Wellbeing Hub. This project would see Quayside Medical Practice, supporting wider regeneration and possible integration with Wave Leisure facilities. Construction is progressing in the former Co-Op building and renovation at Dacre Road Car Park is due to start soon.

RE-IMAGINING NEWHAVEN WILL PROVIDE



Health and Wellbeing Hub
Advanced GP Surgery and improved local leisure facilities in the former Co-op.



Healthy Living & Sustainability
A community supermarket and kitchen on the lower ground floor of the former Co-op.



Creative Hub
Co-working spaces, studios, a café, and a retail area for creative industries in the former Peacocks building.



Urban Living Room
Transforming the upper levels of the under-utilised Dacre Road Car Park.



Wayfinding & Access
Connecting the town centre with key residential and business areas to increase footfall and dwell time.



Town Centre Events Programme
A coordinated programme of events and activities for residents and visitors to enjoy.

Levelling Up Fund

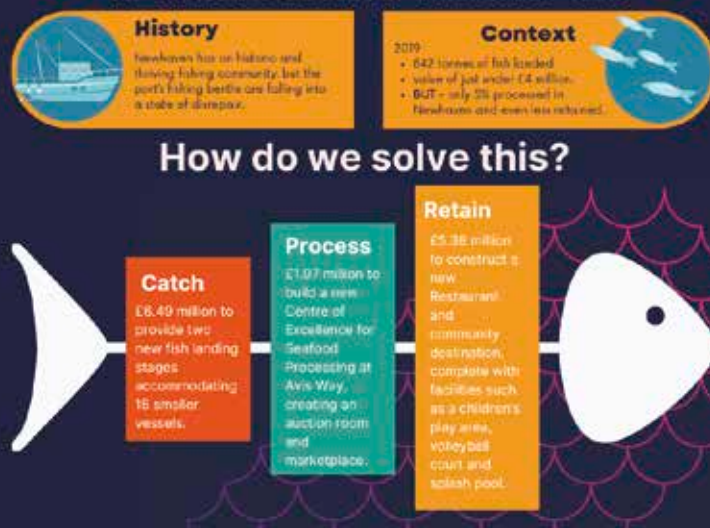
(Capturing the Value of the Catch)

- £12.68 million

Our successful bid to the Levelling Up Fund focused on supporting the local fishing industry. Although the projects are in their infancy, we are pleased to share preliminary plans at this stage.

The bid was submitted by Lewes District Council and required sign off from Maria Caulfield, MP for Lewes. Learn about these projects and so much more at yournewhaven.commonplace.is.

KEEPING WHAT WE CATCH



Newhaven Town Deal

- £19.3m

Following on from Future High Streets Fund success, Newhaven was then selected as part of the Towns Fund; a £3.6 billion fund investing in towns as part of the Government's plan to level up regions. 101 towns were given the opportunity to agree successful Town Deals through a newly established board of local

representatives. Membership is comprised of local councillors, the MP for Lewes and other prominent public sector organisations as well as community, education and business representatives.

The first of these Town Deal projects has been completed; Newhaven FC's 3G pitch is now installed and ready for the start of the 2022/23 season. Much larger projects are on their way. For more information visit yournewhaven.commonplace.is or scan the QR code below.

YOUR NEWHAVEN
Learn about planned projects.
Help shape the future of Newhaven.

1 Scan QR code here

2 Read the story so far

3 Voice your opinion

4 Submit to make a change

Commonplace
Lewes District Council
HM Government

yournewhaven.commonplace.is

Learn about these projects and so much more at yournewhaven.commonplace.is.

Your Newhaven is the definitive site for Regeneration in Newhaven. Learn about funded projects through our interactive funding map and provide vital feedback on what you'd like to see around the town through our consultations. **Scan the QR code or visit yournewhaven.commonplace.is to sign-up and stay informed.**



Ignite Theatre's Performance of 'Gabriel'

Reviewed by Karen Bealby



'Gabriel', written by Moira Buffini and performed by Ignite Theatre in Newhaven in July, was one of the best shows I have seen locally. Stepping into the auditorium, we slipped effortlessly back into the atmosphere of 1930's Guernsey as we watched war-time black and white photos onscreen and listened to music of the period. With excellent direction by Matt Haynes, we were then drawn further in as we watched Lily (the talented Georgina-Rose Robinson) emotionally distraught, in a silent black and white film sequence, discovering an unconscious young man on the beach. The use of sound effects (seagulls, aeroplanes, and, later, Estelle's thoughts) are used with skill to make us feel part of occupied Guernsey, alongside a slide show of Newhaven in the 1940s using stills from Newhaven Museum. And so, the curtain rises on

a cottage kitchen, beautifully detailed, with a cleverly imagined side extension to the main stage depicting a simple bedroom.

The cast were all so talented, creating a true ensemble piece where each of their characters were totally believable as the emotionally charged thriller played out. We watched the gradual breakdown of the determinedly strong mother, brilliantly portrayed by Lisa Fairfield, as she struggles to protect her family against the "force of evil" that is Major Von Pfunz. Jon Terry, as Von Pfunz, moves from a bumbling, drunk buffoon to a truly chilling menace with such ease, his first perfectly spoken English sentence garnering shocked realisation from every audience. His acting gave us a powerfully evil presence throughout. At times Lisa and Jon's performance had me holding my breath.

Estelle, the daughter, is played to perfection by Verity Terry, and her depiction of a child's naïve belief that 'Gabriel' is their saviour is as heartrending as the terrified realisation from Lily about the reality of her situation. The warmth of Helena Jevons as

Mrs Lake, the housekeeper, is wonderfully realised as she shores up all the family in her care, including 'Gabriel'.

Charles Nicholson as 'Gabriel', the lost soul, slips with consummate ease between German and English, his exchanges with Von Pfunz had me mesmerised despite my not knowing any German. We felt Gabriel's confusion and shared his pain.

At times intensely emotional, but also humorous and very real, this production of 'Gabriel' was simply brilliant. Huge congratulations to all involved and thank you.



MEECHING AMATEUR DRAMATICS – M.A.D

Thank you to everyone that came to support our MADs Music Hall variety show 7. It was a great success. Lots of lovely feedback.

From all the crew on the Starship enterprise we salute you!

Keep up to date with M.A.D's latest productions by visiting www.madtheatre.org.

Leadership & Management WORKSHOP

for Business Leaders in the Lewes District

Tuesday 11th October 2022
from 9am to 5pm
Chamber House, 49 Gildredge Road, Eastbourne

As leaders and managers, it's not what we do, it's the way that we do it that matters.

How are you seen, heard and valued as a business owner, manager or team leader?

For your business to be a success, connection and communication between all members of staff and management is the biggest factor in productivity, staff retention and brand building awareness.

There has been a lot of change recently, so this training is critical for the future success of your business.

DURING THE WORKSHOP WE WILL COVER:

- How you feel about yourself as a leader/manager?
- How you interact with your team, suppliers, and customers?
- Dealing with challenges, focussing on your goals, and most importantly being your genuine self



By finding your USP and effectively managing change in a productive way, the doors to your individual success will open. Success takes many forms which we will explore in the training.

Ongoing 1-2-1 support is available following attendance at this workshop.

This workshop is available to business leaders based in the Lewes District. It is fully funded by Lewes District Council and will be delivered by Janette Calverley of Calverley Communications.



To register for this **FREE** workshop, please visit the events page on the Edeal website www.edealgroup.org

Alternatively, you can call 01323 641144 or email info@edeal.org.uk





NEWHAVEN DAY CLUB
01273 512708
Charity Registered No: 257301

Autumn Fayre

TO BE HELD ON SATURDAY
19th NOVEMBER

FROM 9.30am to 11.30

JEWELLERY, BRIC-A-BRAC
TOMBOLA, RAFFLE

TEA, COFFEE, SMALL CAKE £1.20
MUG OF TEA OR COFFEE & SMALL CAKE £1.50
ROLLS WITH CHEESE OR HAM

EVERYBODY WELCOME

**Don't delay –
get your Covid-19
Vaccine today!**

Newhaven Library

 36-38 High Street,
Newhaven BN9 9PD

 **Fridays 1.15pm – 4.15pm**
for everyone aged 18 and over
Saturdays 11am-4pm
for everyone aged 12 and over

1st, 2nd and booster vaccines available
No appointment needed



Haven Young Creatives

FREE Drama Sessions in Newhaven for
8 - 12 year olds and 13 - 17 year olds



Hillcrest Community Centre, Newhaven, BN9 9LH

Every Tuesday starting 20th September for 8 weeks

Haven Younger Creatives: 3.30pm - 5pm
Haven Young Creatives 5.30pm - 7pm

Email havenyoungcreatives@gmail.com to sign up and for more information





This year marks the 40th anniversary of the u3a nationally. 40 years of living, laughing, and learning. In late September members marked the event with an outing to Chartwell, a theatre trip to "The Most Exotic Marigold Hotel", open garden visits and morning coffee and cake with entertainment by Richard Ratcliffe. In September, the public were invited to visit our Art Exhibition at the Hillcrest Centre. Thank you to the Newhaven's Mayor, Cllr Paul Boswell for opening the exhibition. The Gardening Group held a Plant and Produce Sale at the Mencap Riverside Hall with proceeds going to the Ukrainian Crisis Appeal. There were Open Sessions for the public to try out some of the Interest Groups including: Mah-Jong, Social Bridge, Keep Fit, Scrabble and Boccia. More details of these and all Interest Groups are on their website or phone the numbers below. The Ukulele Group also serenaded shoppers at Newhaven Market.

Newhaven & Peacehaven u3a continues to expand its offer to "young at heart" Newhaven

residents. Extra groups added recently are Meditation, Cribbage, Bus Pass Outings, and access to Tenpin Bowling. In September the popular Singing for Pleasure group was re-launched.

Monthly Meetings take place on the first Thursday. In October (6th), it's the Annual General Meeting and one of their popular quizzes. In November (3rd), Andy Thomas will delve into Lewes and Bonfire Night. In December (1st), they kick off Christmas with a buffet provided by members.

Monthly Meetings are at 2:15pm. After the talk there's a raffle, information about groups & events, plus a chance to socialise over a free tea or coffee. The November and January meetings are at the Hillcrest Centre, Newhaven and those in October and December at The Meridian Centre, Peacehaven. Lifts are organised for anyone for whom mobility is an issue. The u3a is happy to welcome potential members to these meetings.

The Lunch Bunch will be dinning out at "The Avenue" in October and lunches are planned for November and January. In mid-December, the u3a will host its annual Christmas Dinner at The EMB Centre.

There are theatre visits planned until Autumn 2023 and new ones added monthly.

Currently taking booking for Cinderella in December 2022.

The charity has at its heart a self-help ethos where members share expertise and enthusiasms. It is for those no longer in full-time work. It gives members the opportunity to meet new people and enjoy a wide variety of interests.

Members are kept informed with monthly emailed Bulletins, a printed Newsletter three times a year and update emails as and when. The Phone Buddies help to keep those without emails up to date.

The annual subscription is £15.



Find out more about Newhaven & Peacehaven u3a by visiting their Facebook page, their website u3asites.org.uk/newhaven-peacehaven or their YouTube channel.

You can contact the u3a by at u3anp@outlook.com or to talk to a person phone Sally 01273 513707 or Sharon 01273 589953 (9am to 5pm).

KEEP UP WITH GOOD HEALTH

by Zara Mojdah Mirfakhraee

Chronic lifestyle related diseases and illnesses are often caused by the way that we live our lives.

Good health is not just about keeping fit physically (although physical exercise is important at any age as it keeps the blood, lymph and fluids flowing which is essential for organ health), but good health is also just as much about awareness of our mental and emotional wellness. This includes taking care of yourself by creating a healthier lifestyle.

Lifestyle changes could mean; learning to eat more healthily (for gut health, this is paramount to our immune system), regularly getting a good night sleep, giving ourselves the gift of time, bringing regular moments of balance and

peace into our lives, as well as establishing healthy habits, healthy thoughts and coping mechanisms for when life throws us curveballs.

Mindful activities can alter your brain map and the way that you think, so that you see things from a different perspective. This ultimately means that these activities can positively lift you and change the way that you see yourself, others, and the world around you. You may think it takes years of dedicated practice before you start to see results, but that's not the case at all. For me, my mindset began to shift within 3 months of starting regular yoga, Pilates classes all those years ago. I gained clarity, I could see my life more clearly and realised that I didn't have to stay in a situation that made me feel negative, unhappy and didn't inspire me.

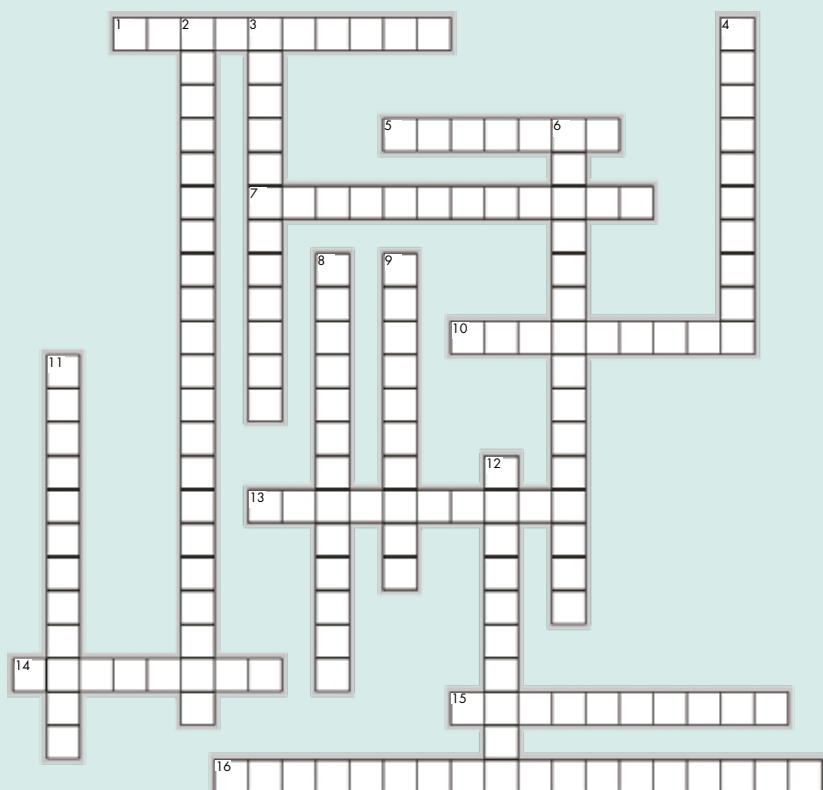
Research has shown that the ability to become more aware and the ability to be able to

regulate your breath cycle is key in terms of lowering stress and becoming more grounded. Both of which are needed to alter pessimistic mood states so that you start to feel happier within yourself. Long-term yoga practice will therefore create long-term changes.

These days, I have a clear and exciting vision for my future, I believe in my own strength to carry through. In a nutshell, mindful activities strengthen our brain-body connection. The integration of awareness, breath and movement can clear blockages and open energy lines within the body. The body then sends messages to the brain that rewire it, making it feel calm, peaceful, content, happy as well strong, positive, and re-inspired.

"To keep the body in good health is a duty, otherwise we shall not be able to keep the mind strong and clear."

Buddha



Teatime Crossword

How well do you know Newhaven?

ACROSS

1. The Lord that Newhaven Fort is in the style of (10)
5. Newhaven's river (3,4)
7. Home of the Newhaven bandstand (6,6)
10. Derelict village on the outskirts of Newhaven (9)
13. Secret intelligence centre, hidden underneath Heighton Hill, just outside Newhaven (3,7)
14. Original name for Newhaven (8)
15. Ill-fated WW2 allied attack on 19th August 1942 (6,4)
16. Home of Newhaven Town Football Club (3,9,6)

DOWN

2. Newhaven's French Twin (2,8,5,6)
3. English historian, writer, and member of parliament that shares his surname with a Newhaven Road? (6,6)
4. Newhaven's oldest church (2,8)
6. Secondary school in Newhaven (8,7)
8. Area where Newhaven Fish Festival is held every year (8,5)
9. Road where Lord Lucan's car was found (6,4)
11. One of the Transmanche Ferries (5,7)
12. Local cliff top nature reserve (6,4)

ANSWERS
Across
1. Palmerston
5. The Ouse
7. Denton Island
10. Tidemills
13. HMS Forward
14. Meeching
15. Dieppe Raid
16. The Trafalgar ground
Down
2. La Chapelle Saint Memstin
3. Edward Gibbon
4. St Michaels
6. Seehaven Academy
8. Huggells Green
9. Norman Road
11. Seven Sisters
12. Castle Hill



SUMMER NEWS FROM NEWHAVEN GREEN CENTRE

We've been keeping ourselves busy this summer, despite the heat!

It was great to meet lots of you at the Denton Community Challenge and Fish Festival in June. AND Our Repair Cafes are going from strength to strength - items we have fixed so far include: Jewellery, clothing, zips, lawnmowers, clocks, loppers, DVD players, toasters and kettles. Here are some of the things that people have said at the repair cafes:

"Everything I brought along got fixed (including 3 clocks!), apart from one thing I need to buy a bolt for. Am really pleased."

"I've been chucking away expensive jeans which had developed holes as I didn't know they could be mended. Now, not only are the holes fixed, I'm more knowledgeable on what's possible to fix them myself in future."

We have a growing team of repairers including phone and laptop repairs, jewellery, electrical, textile and zip repairs, however if you would like to check that we can help before you come along, please email: info@newhavengreencentre.com.

Once you get started, you might find there are lots of things you have lying around the house which need mending: zips on sleeping bags, hoodies, handbags,

electrical goods, clothes needing altering. Do get in touch, and bring them along.

The Repair Cafes are also good fun – there's free tea and cake, and there's a friendly, informal atmosphere that makes it easy to get chatting to people. What better way to spend a Sunday afternoon?

Future Repair Cafe dates include: Sunday 9th October and Sunday 20th November,

They run from 2.30pm - 4.30pm at Meeching Hall, 2A Fort Road, BN9 9QQ.

Everything is free, and we have a donations box.

As well as the repair cafes, we're continuing to run our stalls at Newhaven Library each Thursday mornings 10-12. You can come along to say 'Hello' and find out more about NGC, to chat with us about our plans for the Sharing Library, to bring items for recycling (see our website for more info), and to make use of our free 'bring and take' table, where you can bring things that you no longer want and take other people's items for free.

We are hoping to launch our Sharing Library in September, so watch this space and do send us your email address to join our mailing list.

We're starting to connect with local online sellers to help them to reuse packaging rather than buy it new so please get in touch if you have packaging you'd like to donate or if you sell online and want some. At the moment everything is free (although we're always happy to accept donations!)



Newhaven Tree Wardens

The Queen's Jubilee seems an awfully long time ago now, doesn't it?! But the Newhaven Tree Wardens have planted a celebratory box to remind us and to mark the event.



Here are some photos of before (June 2018) and after down at the travel interchange showing how a barren arid spot of waste ground has been transformed into a planter of sunny cheerfulness for travellers and passers-by to enjoy.

A strawberry tree under-planted with shrubs of red, white and blue surrounded with wild flowers and grasses. Later in the Autumn, we will be planting bulbs to start creating a year-round display.

We will also be planting more wild flowers in the grassy area. Even a bee or two have already found the nectar produced by the flowers there.



Please come and join us by contacting us via Facebook @BN9Trees



www.newhavengreencentre.com
info@newhavengreencentre.com
www.facebook.com/newhavengreencentre

COMMUNITY GREEN HEROES



By *Miriam Thundercliffe*
Coordinator at *Greenhavens Network*

In the last two years, I have had the privilege of working and volunteering in green spaces around the Havens. I see the results of people's commitment to community and preserving the natural habitats around us. It warms my heart to see the passion, care and time people take in looking after each other and the green spaces around them.

In the Havens, there is a wealth of community projects all supporting the need to preserve our green spaces and get the community growing. Fantastic projects like the Denton Community Garden, the Havens Community Hub reducing food waste, preventing it from going to landfill and helping address community need. The group Riverside Park and its planting on land, once wasteland, has seen a huge increase of wildlife in an area that now sees new species and offers a beautiful walking route for all the family. Next to this, the beautiful Valley Ponds, a haven for all things amphibians. All over Newhaven BN9 Trees have been planting fruit trees in people's gardens. Newhaven Green Centre offers a repair café, a sharing library, and ingenious ways to reduce and recycle waste, all working towards fighting climate

change. Up in Peacehaven, the community garden and Orchard provide crucial green spaces offering the local community space to grow food, learn new tips on growing and are a haven for insect species. All run by volunteers aware of the pressing need to have areas that offer care for the earth and a space to grow and share food.

We at Greenhavens, are committed to working with the community in educating adults and families in the need to get your garden/ green space wilder. The past 6 months have seen Jessie and I engaging with community on wildflower walks, Bat Walks, Buglife and Froglife events. All learning and teaching each other on ways in which to make our gardens wilder and doing crucial surveys on what our green spaces contain and ways in which we can increase biodiversity. Fantastic to then see the community go out and use their new knowledge in their green spaces and helping others to go a little wilder. We have a new project coming, the "Gibbon Road Gardeners", where we want to encourage people in the Gibbon Road area to grow their own food, share any excess and develop growing areas on the green spaces surrounding the area.

I know there are families in this area already growing their own, it would be a fantastic opportunity to share skills and knowledge and provide fresh fruit and veg to everyone in this community. We have 5 families already keen to get started and would love more! If anyone is interested in this project, then please contact me at contact@greenhavens.network.

All of these groups/ organisations work from the heart, responding to community and our Earth's needs. Armed with the knowledge we all must do what we can to preserve the natural world. As climate change increases, we must all look to see what we can do to become green community advocates. Our insect loss and lack of wild spaces in England has meant we must look to alternative ways of living in our urban spaces to avoid the catastrophe that will come if our bees and insects become extinct. Our community green champions are all heroes many working voluntarily to preserve and make resilient systems that will support the community and the planet in years to come. To all the Green Heroes out there thank you for providing hope for all our futures.



THE GREAT NEWHAVEN BANK ROBBERY

DARING BANK ROBBERY AT NEWHAVEN: AN EXTRAORDINARY CASE: MANAGER FOUND UNCONSCIOUS; OVER £1000 STOLEN

– headline *Sussex Daily News* September 15th 1896

In September 1896, local residents were shaken to read in the newspapers that Messrs. Barclay and Company's Bank was broken into.

September 14th 1896: A newspaper report states the robbery was discovered when Mrs. Kennard, the wife of the bank manager, whose house is attached to the bank, went into her husband's bedroom and not finding him there searched the whole house without success. Finding no trace of her husband she sent for Mr. Bannister who lives opposite. Mr. Kennard was in the habit of opening the bank doors himself, but they were shut and as the door leading from the house into the bank was locked Mr. Bannister decided to break it down. They found Mr. Kennard unconscious lying on the public side of the counter. Mr. Kennard was immediately taken to his bedroom and a doctor called. There were marks of a hand around his throat but the main injury was concussion, possibly caused by a heavy fall or blow to his head. Mr. Kennard remained unconscious until the following day.

The Police Sergeant Albert Willard (in charge at Newhaven) was called. He found that the door leading into the bank from the street was unlocked; the burglars making their getaway through that exit. First reports said that it was a burglary of the most daring kind, the thieves having obtained accurate information as to the unguarded state of the bank and the habits of its occupants. Sergeant Willard found that the electric wires to the alarm had been cut and the precautions taken by the thieves suggested they were old hands at this business. It appeared they secreted themselves on the premises during the absence of the manager and his family who were at church.

Comments were made that it seemed somewhat singular that a bank should be left unattended at any time. However, this and other questions were left until such time as they could be elucidated when the injured man recovered sufficiently to be able to state the details of the affair.

East Sussex News talks of 'a daring act committed on Sunday night in the very midst of the town and a murderous attack on Mr. J. Kennard the manager. That much is certain, but the remainder of the story is wrapped in the most profound mystery, and those in authority are extremely reticent about the affair'.

It appeared that in the early hours of the morning in question, Mr. Kennard thought he heard a noise in the bank. Having dressed, the manager went downstairs and was surprised to see a light under the door connecting the private premises to the bank. Opening the door, he saw two men in the bank. They blew out the light and immediately launched a murderous attack on Mr. Kennard who was knocked down and rendered unconscious. It appeared that the thieves then continued their nefarious work, removing the keys to the safe from Mr. Kennard's pocket, taking money from the safe and then replacing the keys back in Mr. Kennard's pocket. The money stolen was £420 in gold and £620 in bank notes, however,



Barclays Bank, High Street, 1890

it appears the thieves were disturbed in their work as not all the money was taken from the safe.

Descriptions of the two men were circulated and the Bank offered one hundred pounds as a reward for information leading to the arrest of the thieves and recovery of the stolen money.

Sussex Daily News

Superintendent Smith of Haywards Heath, Superintendent Stevens of Lewes and Sergeant Willard were in consultation yesterday and it is understood that they have a strong clue to the thief and perpetrator of the outrage.

The three police officers asked these questions:

- Why was the bank left unattended when Mr, Kennard and family went to church?
- Why did Mr. Kennard not arm himself before investigating the noise he heard in the bank?
- Why was the commotion from the fight not heard by the managers family?

- Why did the robbers replace the safe keys in Mr. Kennards trousers?
- Why did the robbers not take all the money in the safe?

Within a week it was reported that there never had been a burglary, the whole episode was made up by Mr. Kennard.

East Sussex News 25th September 1896

'Newhaven people, in view of what has recently happened, might well ask the conundrum, "when is a burglary not a burglary?" and it would not be difficult to find the answer. At any rate it has been discovered that the "daring burglary" at the Newhaven branch of Barclay & Company, Limited, was but a figment of the imagination and that the desperate struggle with the intruders was of a mental rather than of a physical character.'

The bank manager, Mr. James Kennard was arrested and sent for trial at Lewes where charges were that between 11th September 1894 and 30th June 1896, he feloniously stole £100, between 11th and

14th September 1896 £507 10s and that on 30th June and 7th September 1896 he made certain entries in his books with intent to defraud his employers.

He pleaded guilty to charges of robbery and falsifying the books and the judge at the end of the trial commented on the fact that he had held a position of trust and integrity which he had misused.

Kennard was sentenced to serve five years penal servitude.

Historical Society Events

4 October 2022 talk by Stanley Barnard at the Hilcrest Centre 7.30 (doors open 7.00) Peacehaven and Telscombe – how they really started.

6 December 2022 talk by Ian Everest at the Hillcrest Centre 7.30 (doors open 7.00) Bishopstone Uncovered.

Newhaven Museum (located at Paradise Park, Avis Road) is open Tuesday, Wednesday, Friday and Saturday 11.00am - 4.00 pm until the 29 October 2022.



▲ Picture courtesy of
newhaven museum

OF BOOZE AND BRIDGES

by Kevin Gordon

Tipper was born in Cocking, West Sussex in 1731 and by the age of 30 was living in Newhaven and brewing beer. His brewery was close to the river, just south of where the Bridge Inn is now situated. Every September he would travel across East Sussex during the hop harvest presumably to buy the core material for his trade. He was also a local exciseman, an amateur lawyer, surgeon and even a musician (he once entertained his friend Thomas Turner, a shop-keeper from East Hoathly on the "German Flute")

We are lucky that Thomas Turner kept an account of his life in a revealingly honest diary between 1754 and 1765. He was not only friends with Tipper but also something of a drinker too. Indeed he regularly visited Tipper at Newhaven. On one occasion he left East Hoathly at 5am in order to breakfast with Tipper. The two men inspected the local fortifications (The new Lunette Battery built to protect the entrance to Newhaven

Harbour) and returned to Tippers home for a lunch which consisted of boiled leg of lamb, lobster, white cabbage and green salad followed by a gooseberry pie and hot baked rice pudding

On 29th May 1763 Tipper and Turner went to Seaford where they had tea which cost 6d. The two men had to pay a penny each for the ferry across the Ouse at Newhaven.

The fact that there was no bridge across the river until Lewes must have irked Tipper because he was one of the driving forces to replace the ferry with a bridge. Trustees for the bridge met at his pub, the New Inn. On Thursday 23rd December 1784 the bridge opened. It was originally a toll bridge, so presumably Tipper eventually got back some of his investment. As the Ouse was busy with traffic the bridge had to be raised to allow sailing ships to pass. It was a bascule bridge, similar in design to Tower Bridge and was designed by John Plaw (1745-1820) of London. On

7th January 1764 a meeting was held in Newhaven to appoint a Toll-Keeper. (Did this mean for the first few days passage was free?) He had to be literate as he had to produce his application in writing and I was amused to read that when on duty he had to provide his own candle. At the same meeting the amount of compensation to be paid to the proprietor of the old ferry (Henry Bates) was also discussed.

Thomas Tipper died on the 14th May 1795 aged 54 years, his bridge, beer and brains all deemed to be worthy of inclusion on his gravestone. His bridge stood for a century but unfortunately a few years ago his tombstone was damaged, however in 1993 it was listed and may it stand for many years to come.

Oh and reader – take note of the last line of his epitaph –

*"Be wise and laugh
more if you can!"*

I will drink to that!



BONFIRE RETURNS TO NEWHAVEN

Meeching And District Bonfire Society was formed in 2020 during Lockdown... over Zoom, as a way of continuing the long-held traditions of community and togetherness. Once we were able to meet face to face, our dream became reality!

We are not your "normal" Sussex stripey jumper/white trouser type society... we are the Johnny Cash of Bonfire and wear Black! Black jeans/trousers and plain Black t-shirts, hoodies or jumpers.

We are in the process of designing Society t-shirts/Hoodies and Jumpers for the future, but for now?

Black is well... the new Black.

We have a bonfire event booked for Saturday 29th October down West Beach Prom with fireworks (more sparkle and fizzing than bangs for our four legged residents), a bonfire under the cliffs and a march from the Bandstand to the beach along the river.

If you want to join? We are on Facebook as Meeching and District Bonfire Society.

Under 16s are free, £15 for adults over 16 and couples are £25.

Email: madbonfire@hotmail.com

Pinky - Bonfire Chief

JUST FRIENDS

Farewell to loneliness

Established in 2018, *Just Friends* is a Sussex-based charity that supports those living alone combat the effects of loneliness. There is no membership fee or age limit. It's not about looking for romance, it's for those looking for - *Just Friends*.

We meet socially on the first and third Monday of the month from 10am until noon at the Newhaven Day Club and have a walking group on the second Monday and a lunch group on the fourth Monday. In addition

to our regular socials, we have events throughout the year.

In the last few months, we have enjoyed coach excursions, a gala day platinum jubilee celebration, a street party, and a tea party; all subsidised through the generosity of both the Town Council and SCDA.

Our future programme includes a Halloween lunch, coach excursions, more tea parties and naturally our annual Christmas Lunch.

We do understand that it is sometimes difficult for someone who has been isolated for some time to take that first step and going into a room of unknown faces can be daunting, but we

have people who will stay with you if you wish and encourage you to join in the chat. You will not be left alone.

The effects of loneliness can be quite devastating leading to stress, anxiety and sometimes depression so take that first step.

You can telephone either Marilyn on 07484 362427, Zoe on 01323 640033 or Frederick on 01323 725882.

As we say on the leaflet
**DON'T BE SHY -
GIVE US A TRY**

Looking forward to meeting you soon.



FISH FESTIVAL FUN!

The Newhaven Fish Festival was a resounding success this year with people attending from all over our wonderful town. Held on a beautiful sunny day, this year's annual community event celebrating all things Newhaven provided an opportunity for local people, organisations and businesses to gather together and celebrate all that the community has to offer creating community pride and a 'feel good' factor.

This year, the queen's platinum Jubilee gave us the opportunity for a double celebration for the town. More people than ever were involved with the parade sponsored by Rampion and the creative workshops that lead up to the event itself were attended by Children and Young people throughout Newhaven.

The stupendous parade was led by our Town Crier, Mayor

and the fantastic Earthquake drummers. It began on Denton Island and marched through the town and down to the West Quay where the event was held.

Children, young people and their parents joined by local community groups and businesses greeted the crowd along with some wonderful creatures of the sea made by Sussex Volunteer Crafters. Thank you to our amazing sponsors Rampion for making the parade possible again this year!

The entertainment kept people dancing and singing until the early evening bringing the community together in a safe and supportive way to celebrate the queen's platinum Jubilee and our wonderful town. The event was generously sponsored by Newhaven Town Council and Veolia and without their contribution it couldn't have been possible. Thank you, Newhaven, for a wonderful day!



FREE ENGLISH CLASSES IN PEACEHAVEN

Come join us and improve your English at our fun Thursday classes! Our lessons are designed to give students an opportunity to socialise in English and cover topics around culture, food,

employment and health with the aim of increasing their social networks and wellbeing.

If you are interested in learning or improving your English, come and join our free English classes on Thursdays at 11:30 – 1pm at Community House, Meridian Centre, Peacehaven, BN10 8BB.


 MAKING IT
HAPPEN

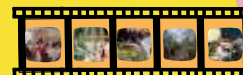
Big Sparks Event! Save the Date

To uncover, celebrate, inspire, showcase and learn about the amazing things that communities are doing in East Sussex

Thursday 10th November 2022

2 – 6 pm followed by a chance to network

The Winter Garden Conference Centre
in Eastbourne



There will be performances, taster sessions, conversations about the things that people feel passionate about and plenty of opportunity to have fun and meet new people.

Get the date in your diary!

To find out more or if you would like to showcase your project, group or activity:

Contact: angie.greany@sussexcommunity.org.uk

Phone: 07920 526224

VOLUNTEERS!

Are you interested in volunteering and supporting people in your community? We are looking for volunteer teachers to help run our informal, community English classes. We are currently supporting a number of adult learners in Peacehaven and hopefully soon in Newhaven.

Our classes provide an opportunity for cultural and language exchange and provides a safe space for meeting new people.

If you are interested in taking part or want to know more, please contact Louise at Sompriti@sussexcommunity.org.uk.

Free English Lessons for Women

Qualified English Teachers
Improve your speaking, fluency and pronunciation



Join us
Every Thursday
11:30am – 1pm

Community House, Meridian Centre
Peacehaven, BN10 8BB

For more information please contact us on 01273516032
or Sompriti@sussexcommunity.org.uk



PEACE COMMUNITY CENTRE
& MOSQUE

SUSSEXCOMMUNITY.ORG.UK
01273516032





IT TAKES A VILLAGE TO RAISE A CHILD (VRAC)

The VRAC project exists to support young people (11-18) and their families to improve their well-being, and to overcome the barriers they face in engaging in education.

Service includes:

- A free Wellbeing Service for young people and their parent or carer.
- Free Youth Counselling Sessions
- Free PACE Activity Sessions
- Free primary to secondary School Transition Support workshops, and an ambassador's peer support programme, (in selected schools).

The Wellbeing Service

The Wellbeing Service was designed as a 1-2-1, tailored, confidential, listening service, to improve wellbeing in its widest sense. The service focusses upon solutions and offers a programme of tailored, solution-focused support, and regular information and updates.

VRAC Counselling

Counselling offers a space to explore, reflect and process experiences and is delivered by skilled youth counsellors.

PACE

The PACE Activity sessions have been modelled on the 5 ways to wellbeing:

Connect, Be Active, Take Notice, Keep Learning and Give. Sessions include creative expression, lifestyle & life skills, connecting with the outdoors & the local community, and physical movement. It is delivered by skilled youth workers, to support young people to build skills and develop independence.

Smooth Moves school transition support

Delivered by skilled youth workers, Smooth Moves provides children and young people with workshops to explore feelings and themes upon moving from primary to secondary school.



Visitors

The East Sussex VRAC team recently hosted a summer visit from 5 European partners working on VRAC projects across the UK, Belgium, France and the Netherlands. All VRAC partners work with the same aims, to support and improve educational engagement.

If you would like to hear more about VRAC

Email: donna.lonsdale-o'brien@escv.org.uk

Tel: 07398 671431.



Dates for diary.

6th – 30th October - Monday – Friday

Photo Fringe 2022. See www.photofringe.org for venues

Saturday 8th October

Beetle Drive at the Hillcrest Centre at 6.30pm
To book, please call 01273 512376

Tuesday 8th November

Guesthouse Storytelling at Hillcrest Centre Performance at 7.30pm

Saturday 15th October

Newhaven Flea Market at Hillcrest Centre at 10am–3pm

Tuesday 18th October

Climate Café at Hillcrest Centre at 6.30pm

Saturday 22nd October

Mayor's Fun Casino Night at Denton Island Bowls Club at 7pm.
Book via Meeching Estate Agents or Newhaven Town Council Office

Saturday 29th October

Meeching And District Bonfire Night at West Beach Prom
Email madbonfire@hotmail.com for more information

November

Night Skies by Jo Hunt, Hillcrest Café Gallery Mon–Fri at 9am–3pm

Tuesday 8th November

Guesthouse Storytelling at Hillcrest Centre Performance at 7.30pm

Sunday 13th November

Remembrance Sunday at Memorial Green

Saturday 19th November

Newhaven Flea Market at Hillcrest Centre at 10am–3pm

Saturday 19th November

Autumn Fayre at Newhaven Day Club at 9.30am–11.30am

Tuesday 22nd November

Find out how to become a Newhaven Town Councillor at Meeching Hall. Time TBC

December

Christmas Art Sale at Hillcrest Centre Mon–Fri at 9am–3pm

December TBC

Christmas Carol Concert, St Michaels Church

8th December – 18th December

A Grandma's Grimm at Meeching Hall. Visit www.ignite-theatre.com for more information on times, dates and tickets.

Saturday 10th December

Newhaven Christmas Extravaganza & Christmas Lights Switch On!
At 1pm–6pm. Newhaven High Street.

What's on.

Arts & Crafts

Hillcrest Stitches

Hillcrest Centre

Every Tuesday 1.30pm–4pm. To book phone 01273 515259.

Intro Art for well being

Hillcrest Centre, Every Friday – 10am–1pm £5 an hour
To book email wildseaarts@gmail.com

Knit N Natter

Hillcrest Centre, Every Monday 2pm–4pm. Just drop in.

Life Drawing

Hillcrest Centre, Every Wednesday 10.30am–1pm
To book email julianlebas@yahoo.com

Linocut Printmaking Classes

Hillcrest Centre, Every Friday 2pm–4pm.
Contact Sally: 07876 666784

Meridian Lacemakers

Denton Island Community Centre, 3rd Saturday of the month
10am–3.30pm. Contact Gail: 01323 730552

Newhaven Art Club

Peacehaven Evangelical Church Hall.
Every Monday at 2pm. Contact Chris Cook on 01273 875928
or email NewhavenArtClub@hotmail.com.

Open Call Art

Hillcrest Centre, Every Thursday 9.30am–1.30pm. Just drop in.

U3A Art

Hillcrest Centre. Every Tuesday 2pm–4pm
To book email graham.heids@btinternet.com

Wood Creative

Hillcrest Centre. Mondays & Thursdays 9.30am–3.30pm
Contact: 01323 741878.

CHILDREN & YOUNG ADULTS

Baby Sensory Group

Hillcrest Centre. Every Thursday from 9.30am Email: eastbourne@babysensory.co.uk or tel 07463763404.

Curious Counters (preschool maths group)

South Heighton Village Hall
Every Thursday 10am–11am Contact jodie@love4learning.co.uk

Harbourside Gymnastics Academy

For more information, please call Tel 01273 515525

Haven Young Creatives

Every Tuesday. Please email havenyoungcreatives@gmail.com

Norcross Dance

Please email Norcrossdancecentre@gmail.com

Newhaven Youth for Christ

Tuesday Youth Group at 6pm–7pm for ages 11–18yrs, Lewes Road Hut
Thursday Youth Group at 6.30pm–8pm for ages 11–18yrs, St Michael's Church Hall
Sparks Youth Group at 5pm–6pm for school years 4–6, St Michael's Church Hall
Sunday Youth Group at 6pm–7.30pm, St Michael's Church Hall
For more information, please visit www.newhavenyfc.org or speak to Sara Alexander Tel: 07763 333998.

NIPPERS

East Side Social Centre
After school club 3–6pm Monday to Friday (term time)
Half term playscheme 24/10/22–4/11/22
End of year playscheme 19/12/22–23/12/22. For details email nippers1973@outlook.com.

SCDA Clubs & Groups

Newhaven Youth Centre, Denton Island, Newhaven, BN9 9BA.
Please contact: youth@sussexcommunity.org.uk to find out more.
Monday Youth Club (term time and summer holidays) at 5pm–7pm. 8–11yrs
Tuesdays: L.A.S.T. Project at 5.15pm–6.30pm a free youth led LGBTQ+ and allies' 12–17yrs
Wednesday Youth Club (term time and summer holidays) at 6.30pm–8pm. 12–18yrs
Thursday Wellbeing Groups at 5.30pm–6.30pm. 11–18 yrs.
Friday Youth Club (term time and summer holidays) at 6pm–7.30pm. 12–18yrs
Newhaven Young People's Forum.
Contact: nypf@sussexcommunity.org.uk to find out more.

HEALTH & WELLBEING

Pilates Classes

Hillcrest Centre, Once a month Tuesday 11.30am–12.30pm To book contact Tash on 07831 120600

Slimming World

Denton Island Indoor Bowls Club
Every Saturday at 9am Contact Tina on 07534 901591

Elim Pentecostal Church

Every Thursday at 5.30 pm
Contact Karen on 07872 388080

Yoga with Sue (Hatha Yoga)

Denton and Mount Pleasant Social Hall
Every Thursday at 9.45am–11.15am

Zara Yoga & Pilates

Meeching Hall
Mondays at 11am - Mat based Pilates
Wednesdays at 5.45pm - Hatha Yoga
Wednesdays at 7pm - Mat based Pilates
Friday at 9.30am - Hatha Yoga

INTEREST GROUPS

Book Club

Hillcrest Centre, Once a month 7pm–9pm To book email oldbezzas34@gmail.com

Castle Hill Group

First Sunday of every month at 10am. Scrub management and other tasks such as litter picking. Please meet in the top car park at The Fort.

Friends of Tidemills

Meet every third Sunday of every month, at 10am to tidy and clean up rubbish. For more information contact Jim Skinner brianjimskinner@gmail.com or Tel 01273 517291

Guesthouse Storytellers

Hillcrest Centre, Tuesdays Once a month 7pm–10pm To book email wendy.atkinson@btinternet.com

Historical Society

Events – see page 25
Newhaven Museum (located at Paradise Park, Avis Road) is open Tuesday, Wednesday, Friday and Saturday 11.00am - 4.00pm until the 29 October 2022

Newhaven & District Model Railway Club

Wednesday evenings. For more information, please email newhavendmrclub@gmail.com or telephone 07715 993675

U3A

Offers a range of groups and events. For more information, please visit www.u3asites.org.uk/newhaven-peacehaven/home

MUSIC & DANCE

Ballroom Dancing

Hillcrest Centre, Every Friday – 6.30pm–8pm To book phone 01273 476565

Haven Harmonies Community Choir

Hillcrest Centre, Every Monday 7pm - 9pm Contact marianstanley43@gmail.com or www.havenharmonies.wordpress.com. No auditions, no requirement to read music. First session free then £3 every week. Please note we have reduced our weekly fee from £5 to £3.

Nukehaven (Ukulele)

Hillcrest Centre. Wednesdays Fortnightly 7pm–9pm Contact Sue on 07745 394220. Just turn up with a ukulele!

Private Dance

Hillcrest Centre. Every Friday – 10am–12.30pm To book phone 01273 476565

SOCIAL

Denton Women's Fellowship

Denton Church Hall. Every last Tuesday of the month at 2.30pm Contact: Ann 01273 514482 for information on Speakers.

Just Friends

Newhaven Day Club
1st & 3rd Monday of every month at 10am–12pm
2nd Monday of the month Walking Group
4th Monday of every month Lunch Group

Newhaven Day Club

West Quay (Northeast of Carpark)
Tuesdays at 10am–12pm Coffee & Tea
1st Tuesday of the month Bingo at 1.30pm
2nd Tuesday of the month Craft & Soup at 1.30pm
3rd Tuesday of the month Stuffed Animals Racing at 1.30pm
4th Tuesday of the month Games at 1.30pm
Thursdays at 10am–12pm Coffee & Tea, followed by Hoy at 1.15pm or Art at 2pm
Fridays at 10am–12pm Coffee & Tea, dinner at 12.30
Contact Tony on 01273 513189 for details.

Newhaven Peacehaven Lions

For more information visit Facebook @NPSLions

Rotary Club of Newhaven Coast West

For more information, please visit Rotary Club of Newhaven Coast West on Facebook

St Michael's Drop In: Coffee, Tea, Cake & Chat

St Michael's Church. Every Wednesday at 10am

SPORT

Affinity Rowing Club

For details visit Facebook @ARCGraceOMalley or email info@affinityrowingclub.co.uk

Denton Cricket Club

For more information, please visit www.dentonsussex.play-cricket.com or Tel: 07883 097883

Denton Island Indoor Bowls Club

For more information, please visit www.dentonislandbowls.co.uk or Tel: 01273 514664

Denton Table Tennis Club

Denton Church Hall
Every Wednesday: 7pm–9pm and Friday 10am–12pm
Contact Rosemary on 01273 611384

Newhaven Gig Rowing

For details visit www.ngrc.co.uk or email admin@ngrc.co.uk

Newhaven Bowling Club

Back in Spring 2023!

Newhaven Football Club

For more information, please visit www.newhavenfc.co.uk

Tai Chi

Hillcrest Centre. Every Monday at 9.30am–11.30am
www.taichieffect.com or 07429007691

Newhaven Tennis Club

Every Saturday: Three Junior coaching Sessions 9.00am | 10.00am | 11.00am
Every Saturday: Adult Club sessions 1pm–4.30pm Open to non-members
Every Tuesday: Mix of Adult and Junior Coaching: 9.00am–1.00pm
Every Tuesday: Adult Club sessions 1.00pm–4.30pm
Every Thursday: Adult Club sessions 1.00pm–4.30pm

SUPPORT GROUPS

AA Meetings

Hillcrest Centre – Thursdays at 7pm
Meeching Hall – Wednesdays at 9.30

Bereaved by Suicide: East Sussex

Please contact Kellie at Kellie.leyton@sussexcommunity.org.uk or 07542 305419 for further information or call the Sussex Suicide Bereavement Support Team on 07376 616628.

Nebula Every Monday: 2pm–4pm Drop in



✓ FREE DELIVERY ON ORDERS OVER £20.

✓ VEGAN OPTIONS AVAILABLE.

✓ GLUTEN FREE OPTIONS AVAILABLE.

✓ 10% DISCOUNT ON ONLINE ORDERS.



**OPEN CHRISTMAS DAY
12-3PM. BOOKING ONLY!**



☎ 01273 513308

🌐 [HTTPS://VICEROYNEWHAVEN.CO.UK](https://viceroynewhaven.co.uk)

🏠 4 BRIDGE STREET, NEWHAVEN, BN9 9PJ