

# Newhaven Matters

Summer 2026 // Issue 50



# Contact your local Town Councillor

## NEWHAVEN CENTRAL WARD

**Shaun Boniface**  
t: c/o 01273 516100  
e: [cldr.shaun.boniface@newhaventowncouncil.gov.uk](mailto:cldr.shaun.boniface@newhaventowncouncil.gov.uk)

**Michael Young**  
t: c/o 01273 516100  
e: [cldr.michael.young@newhaventowncouncil.gov.uk](mailto:cldr.michael.young@newhaventowncouncil.gov.uk)

## NEWHAVEN DENTON WARD

**Lindsey Macleod**  
t: 07751 527211  
e: [cldr.lindsey.macleod@newhaventowncouncil.gov.uk](mailto:cldr.lindsey.macleod@newhaventowncouncil.gov.uk)

**James Harrison (& District Councillor South)**  
t: c/o 01273 516100  
e: [cldr.james.harrison@newhaventowncouncil.gov.uk](mailto:cldr.james.harrison@newhaventowncouncil.gov.uk)

**Corina Watts (& District Councillor North)**  
t: 07586 573238  
e: [cldr.corina.watts@newhaventowncouncil.gov.uk](mailto:cldr.corina.watts@newhaventowncouncil.gov.uk)

**Jo Pettitt (& District Councillor South)**  
t: c/o 01273 516100  
e: [cldr.jo.pettitt@newhaventowncouncil.gov.uk](mailto:cldr.jo.pettitt@newhaventowncouncil.gov.uk)

**Jessa Chapman**  
t: c/o 01273 516100  
e: [cldr.jessa.chapman@newhaventowncouncil.gov.uk](mailto:cldr.jessa.chapman@newhaventowncouncil.gov.uk)

## NEWHAVEN NORTH WARD

**Lesley Boniface**  
t: c/o 01273 516100  
e: [cldr.lesley.boniface@newhaventowncouncil.gov.uk](mailto:cldr.lesley.boniface@newhaventowncouncil.gov.uk)

**Mark Wardle**  
t: c/o 01273 516100  
e: [cldr.mark.wardle@newhaventowncouncil.gov.uk](mailto:cldr.mark.wardle@newhaventowncouncil.gov.uk)

**Steve Saunders**  
t: 07976 371116  
e: [cldr.steve.saunders@newhaventowncouncil.gov.uk](mailto:cldr.steve.saunders@newhaventowncouncil.gov.uk)

## NEWHAVEN SOUTH WARD

**Graham Amy (& District Councillor South)**  
t: 01273 514942  
e: [cldr.graham.amy@newhaventowncouncil.gov.uk](mailto:cldr.graham.amy@newhaventowncouncil.gov.uk)

**Pinky McLean-Knight**  
t: c/o 01273 516100  
e: [cldr.pinky.mclean@newhaventowncouncil.gov.uk](mailto:cldr.pinky.mclean@newhaventowncouncil.gov.uk)

**Kim Bishop**  
t: c/o 01273 516100  
e: [cldr.kim.bishop@newhaventowncouncil.gov.uk](mailto:cldr.kim.bishop@newhaventowncouncil.gov.uk)

**Krissy Taylor**  
t: c/o 01273 516100  
e: [cldr.krissy.taylor@newhaventowncouncil.gov.uk](mailto:cldr.krissy.taylor@newhaventowncouncil.gov.uk)

**Julie Carr (& District Councillor North)**  
t: 07757 722927  
e: [cldr.julie.carr@newhaventowncouncil.gov.uk](mailto:cldr.julie.carr@newhaventowncouncil.gov.uk)

**Jan Woodling**  
t: c/o 01273 516100  
e: [cldr.jan.woodling@newhaventowncouncil.gov.uk](mailto:cldr.jan.woodling@newhaventowncouncil.gov.uk)

**Madeleine Cook**  
t: c/o 01273 516100  
e: [cldr.madeleine.cook@newhaventowncouncil.gov.uk](mailto:cldr.madeleine.cook@newhaventowncouncil.gov.uk)

**Sarah Hale**  
t: c/o 01273 516100  
e: [cldr.sarah.hale@newhaventowncouncil.gov.uk](mailto:cldr.sarah.hale@newhaventowncouncil.gov.uk)

## Town Council Meetings

Tue 28th July	Planning & Development	Environment & Amenities
Tue 25th August	Planning & Development	Regeneration & Strategic Development
Tue 15th September		Full Council
Tue 29th September	Planning & Development	Environment & Amenities
Tue 27th October	Planning & Development	Promotion, Partnership & Finance



# Contents

*What's inside this issue*

- |           |   |           |   |
|-----------|---|-----------|---|
| <b>04</b> | Mayor and Deputy Mayor's Welcome                      | <b>19</b> | Hugo Spritz Recipe                                    |
| <b>05</b> | Young Mayor   | <b>20</b> | Hospitable Environment: Newhaven Rocks                |
| <b>06</b> | Town Developments                                     | <b>21</b> | Plants Take Centre Stage in Schools SEND Project      |
| <b>08</b> | BN9 Trees and Newhaven Litter Pickers                 | <b>22</b> | Creative Feels Designs: Creativity Blooms in Newhaven |
| <b>09</b> | A Warm Welcome to New Local Businesses                | <b>23</b> | Calligraphy Competition                               |
| <b>10</b> | Newhaven Chamber Business Awards                      | <b>24</b> | Cement Studios  |
| <b>13</b> | Puzzle Page   | <b>26</b> | Newhaven Bridge Club & Newhaven Repair Café           |
| <b>14</b> | Warm Days, Cool Dogs: Getting Ready for Summer Fun    | <b>27</b> | Rainy Day Foundation & The Community Closet           |
| <b>16</b> | Conserving Heritage: Newhaven Fort                    | <b>28</b> | Grants  |
| <b>17</b> | Our Newhaven  | <b>29</b> | Events  |
| <b>18</b> | Newhaven Gig Rowing Club & Ouse Valley Morris Dancers | <b>30</b> | Clubs, Activities & Workshops                         |



Message from the

# Mayor

Hello everyone,

As I begin my term as Mayor of Newhaven, I want to express how proud I am to serve this remarkable town. Having lived and worked here for many years, Newhaven is a community that has shaped me, supported me, and inspired me. It is a privilege to now represent it.



We are entering an exciting chapter. New businesses, cultural projects, and community initiatives continue to bring new life into the town, while long standing groups and volunteers remain at the heart of what makes Newhaven special.

This year, I have chosen to support two charities whose work reflects the compassion and resilience of our community.

**The Rainy Day Foundation** provides practical, immediate support to individuals and families facing unexpected financial hardship. Their work helps people during difficult moments and I'm proud to highlight the difference they make.

Alongside them, **Homeless in the Havens**, part of Havens Community Hub, offers vital help to those experiencing or at risk of homelessness across our coastal towns. Their commitment to dignity, safety, and long term support is something I deeply admire.

Over the coming year, I look forward to supporting events and activities that celebrate our identity and strengthen the connections that make our town feel like home.

Thank you for welcoming me into this role. I hope to meet many of you soon, and I'm always happy to hear from residents who want to share ideas, concerns, or hopes for the future of Newhaven.

**Cllr. Mark Wardle**

“*Newhaven is a community that has shaped me, supported me, and inspired me.*”



## Message from the Deputy Mayor

I am excited to be Deputy Mayor because I care deeply about our community and the direction we're heading in.

This role is about listening to residents, supporting local

initiatives, and making sure decisions reflect the needs of the people we represent. I want to help strengthen the connection between the council and our community, ensuring that everyone feels heard and included. I've worked to build relationships, contribute to key decisions, and support projects that make a real difference.

**Cllr. Krissy Taylor**



# NEWHAVEN PHOTOGRAPHIC COMPETITION



*Theme: Best of Newhaven*

## CATEGORIES



Under 12's



13-18



18+



## RULES

- Must be taken on a phone
- Strictly amateur
- Portraits only (No landscape)
- Must detail age if under 18

- If anyone is identifiable in the photo, the photographer must ensure they have discussed it with the subject(s) and that they are happy with the submission.
- Minor digital enhancements to colour, contrast, brightness and sharpness, as well as cropping, are permitted. Major enhancements and edits and the use of Artificial Intelligence to generate or alter images are not permitted.



Photos must be taken in Newhaven



Email your entries by 15th October '26

[photocomp@newhaventowncouncil.gov.uk](mailto:photocomp@newhaventowncouncil.gov.uk)



Exhibition & Public Vote in The Atrium, Marine Workshops in November '26



Winners will be announced in December with a presentation by the Mayor of Newhaven.



Win a **£50 Voucher**



# YOUNG MAYOR

## COULD YOU BE NEWHAVEN'S NEXT YOUNG MAYOR?

If you're 13-17 years old and want to make a real difference in your community, this is your chance to lead!



### WHAT YOU'LL DO



Represent young people's voices



Work with local councillors



Lead youth projects & events



Make real change happen!



### APPLY NOW



[www.newhaventowncouncil.gov.uk/news/young-mayor-applications/](http://www.newhaventowncouncil.gov.uk/news/young-mayor-applications/)



[admin@newhaventowncouncil.gov.uk](mailto:admin@newhaventowncouncil.gov.uk)

Attend events, manage your own project, raise money for a charity you are passionate about and be the voice of young people in Newhaven.



**YOUR VOICE. YOUR COMMUNITY. YOUR POWER.**

## West Quay Fish Landing Stage and Fort Road Recreation Ground Completed

The Fort Road Recreation Ground project has provided refurbished buildings and toilets, landscaping, pathways, community garden and fitness trail.



A new fish landing stage has been constructed on West Quay. A new steel and timber jetty, floating pontoon, access

walkway, and two dedicated unloading cranes for local fishermen, replacing two older deteriorated structures.



▲ Newhaven Square

## Newhaven Town Centre – Health Hub and Public Realm Improvements

The Health Hub, which opened with Newhaven Medical Practice in May, will be opening its doors a second time in August with a GP practice, pharmacy, improved facilities for Wave Leisure and a dedicated Creative Hub.

New lighting, street trees and planting will then be installed within the Town Centre, ushering in a new era for the heart of the town. Phased works will start this summer and be completed by Spring 2027.

Look out for a full feature story in our Autumn Issue of Newhaven Matters.



Newhaven High Street

## The BIG Clean Up

The paving bricks of Newhaven High Street are due a big clean and replacement of bricks this year. The works carried out by Lewes District Council will leave our streets sparkly clean, with new lights to complete the scene.



Before

## Chapel St, South Way, and Meeching Road

Have you noticed more planting areas around the town centre? Chapel St, South Way, and Meeching Road all have new landscaping thanks to *Newhaven's Wayfinding and Public Realm Improvement Scheme*, funded by UK Government.

All three areas were designed by Nicholas Dexter and planted by Stu and his team at The Garden Landscapers in 2025.

Christian Funnell has also created a sculptural bench on the corner of South Way with views of the river.

The landscaping team would like to thank residents for being so friendly and encouraging while on site in challenging conditions.

Newhaven Town Council will now maintain the plants and trees, making sure they continue to establish themselves and are helped through the drier months.

“  
*I combined evergreen structures with seasonal highlights. It was important to include resilient, low maintenance species that are suited to coastal conditions’.*  
”

Nicholas Dexter



After



Newhaven Town Council's new contractor, Southern Land Services have been working hard to maintain our green spaces. We had the delight of receiving some photographs from East Side recreation ground after they have the football pitch a fresh coat of paint.

“  
*What a difference. The pitch is cut regularly and to the correct length. We have brand new nets. Thank you to everyone at NTC, it's miles better.*  
”

Sean from Newhaven Football Club

# BN9 TREES

*BN9 Trees are local volunteers who actively engage in planting, protecting, and promoting trees in our communities.*

They conduct various activities on behalf of Newhaven Town Council, such as planting new trees and raising awareness about their importance. They have committed to planting in many spaces such as; Powell Gardens, North Way, Denton Park, Lewes Road Recreation Ground.



If you would like a tree in your front garden, BN9 offer free saplings and plantings for residents in Newhaven. There are many saplings to choose from; Aspen, Birch, Blackthorn, Chesnut, Crabapple, Hawthorn, Hazel, Rowan and Silver Birch! Contact them at [bn9trees@hotmail.com](mailto:bn9trees@hotmail.com).

## Newhaven Litter Pickers

The year started for Newhaven Litter Pickers with a pick your own street event on New Years day. Two ships that lost the contents of their containers in the Solent washed up on local shores and Newhaven Litter Pickers (NLP) joined forces with



Plastic Free Newhaven for a collaborative pick to clear the debris. However, they did not stop there and continue to collect litter to help protect our environment. During March, NLP took part in the Great British Spring Clean, a nationwide campaign by Keep Britain Tidy. By day 9 of the event, they had beaten last years total of 121 bags. Alongside the eco warriors at Seahaven and new group Peacehaven and Newhaven Litter Pickers, they aimed to clear the A259, totalling a whopping 191 bags.



They have launched two new sister groups. Womble Wednesday meet each week to pick a scenic spot and Little Pickers meet each month with home educated children to pick their local area.



## NEW LOCAL BUSINESSES WELCOME

Open every Thursday and Saturday from 8AM to 2PM,  
Newhaven Street Market – for food, creativity, and community.

**Newhaven Street Market** invites visitors to experience the vibrant heart of the town through a celebration of fresh produce, handmade crafts and delicious food. Newhaven Street Market is where community, quality, and independent traders come together to create something truly special.

Discover a world of flavours from passionate local food artisans. From freshly baked goods to exciting international street food, every vendor brings care, creativity, and quality to their dishes. Whether you're looking for a quick bite or something new to try, there's something to satisfy every taste.



## A warm welcome to Sweet Cravings!

Cake shed Sweet Cravings opened with great success on 9th May at The Cloisters, Newhaven, BN9 9LW.

The shed operates on a small, independent basis, with a focus on quality, creativity and a friendly service. They sell homemade brownies, cookies, cakes, traybakes and more. You can find Sweet Cravings open on weekends.

“ From rich, fudgy brownies to freshly baked cookies, indulgent cakes and irresistible traybakes – everything is made with love, and trust us... you're going to want to try it all.

*I look forward to becoming a positive part of the community.*

**Marianne**



Do you have a new business in Newhaven? To feature, get in touch!  
[newhavenmatters@newhaventowncouncil.gov.uk](mailto:newhavenmatters@newhaventowncouncil.gov.uk)



## Seahaven Business Awards

*Seahaven Business Community Celebrated at Spectacular Awards Evening!*

The 2025 Seahaven Business Awards delivered an unforgettable evening of celebration, recognition and community spirit as 140 business people and VIP guests gathered at the American Express Stadium for the Gala Dinner and Awards Ceremony.

The event showcased the incredible talent, resilience and ambition of businesses across the Seahaven area, with guests enjoying a two-course dinner, drinks reception and lively entertainment throughout the evening.

Hosted by John Young, the ceremony struck the perfect balance between celebration and heartfelt recognition, with many winners visibly emotional as they accepted their awards in front of peers, colleagues and supporters.

In his address, Alan McCarthy MBE, Deputy Lieutenant, praised the local business community, saying

*"It takes real tenacity and staying power to thrive in the current business climate. You have important ingredients for success and it's absolutely palpable tonight, the strong community sense that you have, healthy competition, and I hope you continue to go from strength to strength."*

The Chamber President also reflected on the importance of collaboration and shared success within the business community, saying:

*"We rely on suppliers, partners, customers, and ideas from across the UK, across Europe, and across the world. We are all connected, it is one of our greatest strengths."*

The evening also demonstrated that community support extends far beyond business networking and recognition, with an incredible £2,000 raised for Seaford Downs Syndrome and Special Needs Support Group which

included a donation of £600 from Elite Industries Ltd.

**The Awards were made possible thanks to the support of local sponsors and partners**

Special thanks go to Gold Headline Sponsor Quintessence Fragrances; Bronze Sponsors Newhaven Port & Properties and Newhaven Chamber of Commerce; Drinks Sponsors Cleankill Pest Control, Tomsetts Distribution, LeForte Property Maintenance, Leather4Craft, V R Flowers & Son, Arlettes Florists, Enchanted Princess Parties, 2nd Cup of Tea and Seahaven FM.

Thanks also go to category sponsors Newhaven Enterprise Zone, Fine Marketing, Newhaven Enterprise Centre, We Are Cleaners, Experience It Now Travel, Mike Shorer Fine Jewellery and Swindells Chartered Accountants.

# Our winners



## BUSINESS OF THE YEAR

We Take Calls  
The Sussex Sign Company  
Be Well with Shell

▲ Business of the Year. We Take Calls, The Sussex Sign Company and Be Well with Shell with sponsor Michelle Connors from the Newhaven Enterprise Zone



## BUSINESS PERSON OF THE YEAR

Shirley Brooks  
Julie Terry  
Gary Maskell

▲ Shirley Brooks, Julie Terry, Gary Maskell with sponsor Ian Jenkins from Swindells Accountants



## CUSTOMER SERVICE AWARD

Be Fabulous  
Enable and Support  
The Viceroy

▲ Be Fabulous, Enable and Support and The Viceroy with sponsor Kirstie Knight from We Are Cleaners.



## BEST NEW BUSINESS

Aurora HR  
Chris Sarson Funerals (joint with) Jack's Tidy Gardens  
Save Bills/Shirley Brooks

▲ Aurora HR, Chris Sarson Funerals (joint with) Jack's Tidy Gardens and Save Bills/Shirley Brooks with sponsor Nicola Lee from Newhaven Enterprise Zone



## BEST HEALTH, WELLBEING AND FITNESS BUSINESS

Be Well with Shell  
Sawyer Transformations  
Jane Evans Hypnotherapy

▲ Be Well with Shell, Sawyer Transformations and Jane Evans Hypnotherapy with sponsor Richard Light from Experience It Now Travel.



## PRESIDENT'S AWARD FOR CREATIVE ENTERPRISE

Julia Dunstan Design  
Oceanic Woodstore  
Rhapsody Artists  
Development

▲ Julia Dunstan Design, Oceanic Woodstore and Rhapsody Artists Development with Newhaven Chamber President/sponsor Mike Shorer Fine Jewellery



## BEST TOURISM & LEISURE

Newhaven Museum  
Maverick Boat Adventures  
All Abroad! Bus

▲ Newhaven Museum, Maverick Boat Adventures and All Abroad! Bus with sponsor Julia Johnson, Fine Marketing Ltd.



Photography by Matt Harquail Photography



Christopher Sarson  
Independent Funeral Director

Independent Funeral Director with  
over 39 years experience

From a direct cremation to horse drawn funerals, green burials to graveside services, church funerals to custom creation services



Call 24 hrs 01273 568536  
13 Bridge Street, Newhaven, BN9 9PH  
SARSONFUNERALDIRECTORS.COM

# MEECHING

Estate Agents

Thinking of renting?  
Thinking of selling ?  
Thinking of buying ?



'For all your property needs'

**CONTACT US**

☎ Tel: 01273 515566  
✉ Sales@meechingstates.co.uk

# Puzzle Page



## SUDOKU

Difficulty: ★★★

### PUZZLE COMPETITION

Send in one completed puzzle by post or email by 2nd August via:

**Email:**

[admin@newhaventowncouncil.gov.uk](mailto:admin@newhaventowncouncil.gov.uk)

**Or Post:**

18 Fort Road, Newhaven, East Sussex, BN9 9QE

**For a chance to win a £20 retail voucher!**

	9				8			
				4				
4			9		6			
		7					8	4
	6	9				1		3
		1		3	7	2		
		2		7			1	9
				6		8		
	7	6			3			2

F	H	O	L	I	D	A	Y	G	J	V	H	A	P	P	Y	N	E
R	P	E	F	T	H	D	B	P	M	B	O	F	O	N	L	D	S
J	B	M	B	S	O	N	P	B	C	F	S	M	B	U	A	E	Q
I	E	Q	R	A	W	E	O	H	Q	B	M	N	S	E	N	D	I
L	E	M	O	N	A	D	E	F	E	H	C	E	R	P	A	B	A
S	Q	M	R	E	V	I	R	K	K	F	U	W	C	S	N	C	B
U	C	R	M	S	I	I	B	Y	F	C	V	H	D	F	C	R	H
N	C	K	P	U	E	Q	A	A	M	M	N	A	O	I	S	A	C
G	H	K	R	N	H	J	J	U	R	Y	F	V	M	S	R	P	X
L	T	C	D	N	E	A	S	M	C	M	C	E	Y	H	O	K	M
A	W	S	K	P	W	I	S	W	L	H	N	N	K	U	M	C	Y
S	B	N	U	C	C	E	F	I	B	C	O	C	K	T	A	I	L
S	E	P	B	M	O	I	S	V	B	N	Q	T	B	Q	E	N	R
E	N	H	U	M	M	F	U	N	D	C	P	S	A	C	R	A	J
S	Z	T	D	B	V	E	I	R	A	K	H	R	N	E	C	V	R
N	W	M	H	I	Q	P	R	F	M	H	O	Q	N	D	N	U	M
V	A	I	U	R	N	O	C	M	T	E	T	S	G	D	U	S	E
K	F	N	M	F	D	W	G	E	B	L	O	A	V	N	S	U	H

## SUMMER WORD SEARCH

### Words:

- |          |            |
|----------|------------|
| Summer   | Cocktail   |
| Fun      | Music      |
| Beach    | River      |
| Newhaven | Swim       |
| Suncream | Photo      |
| Lemonade | Hot        |
| Friends  | Sunglasses |
| BBQ      | Fish       |
| Holiday  | Happy      |





## Warm Days, Cool Dogs: Getting Ready for Summer Sun

*Most of us, and our dogs, love the warm weather but it brings with it its own set of challenges.*

### Heat Stroke

Shorter faced breeds like Staffies, Pugs and Bulldogs are most vulnerable, and the danger is greater if they are overweight. To prevent problems, avoid exercising your dogs in the midday heat and make sure they don't over-exert themselves.

### Grass seeds

Grass seeds can easily become trapped in the coats of dogs. They then migrate and become lodged in a variety of places such as ears and toes. It is always a good idea to groom your pets regularly, and especially after walks, to keep a close eye out for grass seeds.

### BBQs

Lovely weather and longer evenings, often mean lots of barbecues, and dogs often have a great time hoovering up the left-overs! This can cause stomach upsets or serious blockages requiring surgery to remove bones, kebab sticks and sweetcorn cobs. Please keep your pets away from the barbecue.

### Allergies

For sensitive dogs with allergies, the flowers and grasses that thrive in the summer months can cause real problems. Dogs can break out with skin rashes on their feet, stomach and ears and it can be very itchy for them. If this becomes the case, make sure they are up to date with their anti-parasite treatment since fleas can often be the cause. There are a lot of medications available now that can help improve the situation.



**Enjoy the summer months, have fun and keep your pets safe. If you have any concerns, please contact your local vet.**



# LITTLE SCAMP'S PET CLUB

What do dog walkers need to be careful of when out and about in Newhaven?

Adders. These snakes are venomous and can be extremely dangerous. If a dog is bitten, they should be taken straight to a vet.

What can dog owners do if it's too hot?

Walk your dog as early as possible.

If your dog overheats, cool them down slowly. Move them to shade and offer small amounts of water to avoid vomiting. Let them rest and wet their paws, belly, groin, armpits and ears with cool water. If you suspect heatstroke, contact your vet.

When should someone not walk their dog? What could they do instead?

If walking on the pavement, check to see if it's too hot with the palm of your hand. If it's too hot for you, it'll be too hot for your dog's paws.

When it's hot most dogs tend to slow down and sleep more. If you can't get your dog out early, you could play with toys, or create mentally stimulating games.

However, keep them as calm as possible in the hottest part of the day.

Remember that not taking them for a walk won't hurt them, but walking them in extreme heat will.

What is your favourite place to walk your doggy friends in Newhaven?

Tide Mills when the tide is out!

## HEAT GUIDE



Up to

23°

Most other breeds can cope up to 23 degrees with careful considerations. Keep the walks short, cool and bring water. Avoid over exciting your dog. Small frozen towels are also useful.

19°

Flat faced breeds, overweight, older dogs and puppies may struggle over 19 degrees. Consider early morning walks or indoor play. Again, make sure they have water!

17°

Be aware of overheating. Bring water. Consider cooler walks and shady areas. All dogs should be safe but consider your dog may find it too hot.

## CONSERVING HERITAGE: NEWHAVEN FORT'S 6-INCH MARK VII GUN



In 1982 during the initial rebuilding of Newhaven Fort, two historic artillery pieces were brought to the Fort. The two guns, a 6-Inch Mark VII and a 12-Pounder CWT, were a monument to the tens of thousands of men who served at Newhaven Fort throughout its nearly 90 years of military service.

Unfortunately, they fell into a state of serious disrepair, mostly due to lack of experience and lack of funding. Therefore in 2025 the decision was made to conserve the two guns which had not been worked on since 2006.



To start with, the worst of the blown metal was removed. After the surface was sanded or shaped a Red Oxide primer was painted to protect the metal below. The process of removing the rust, treating the metal and applying red primer took nearly two months of intermittent work.



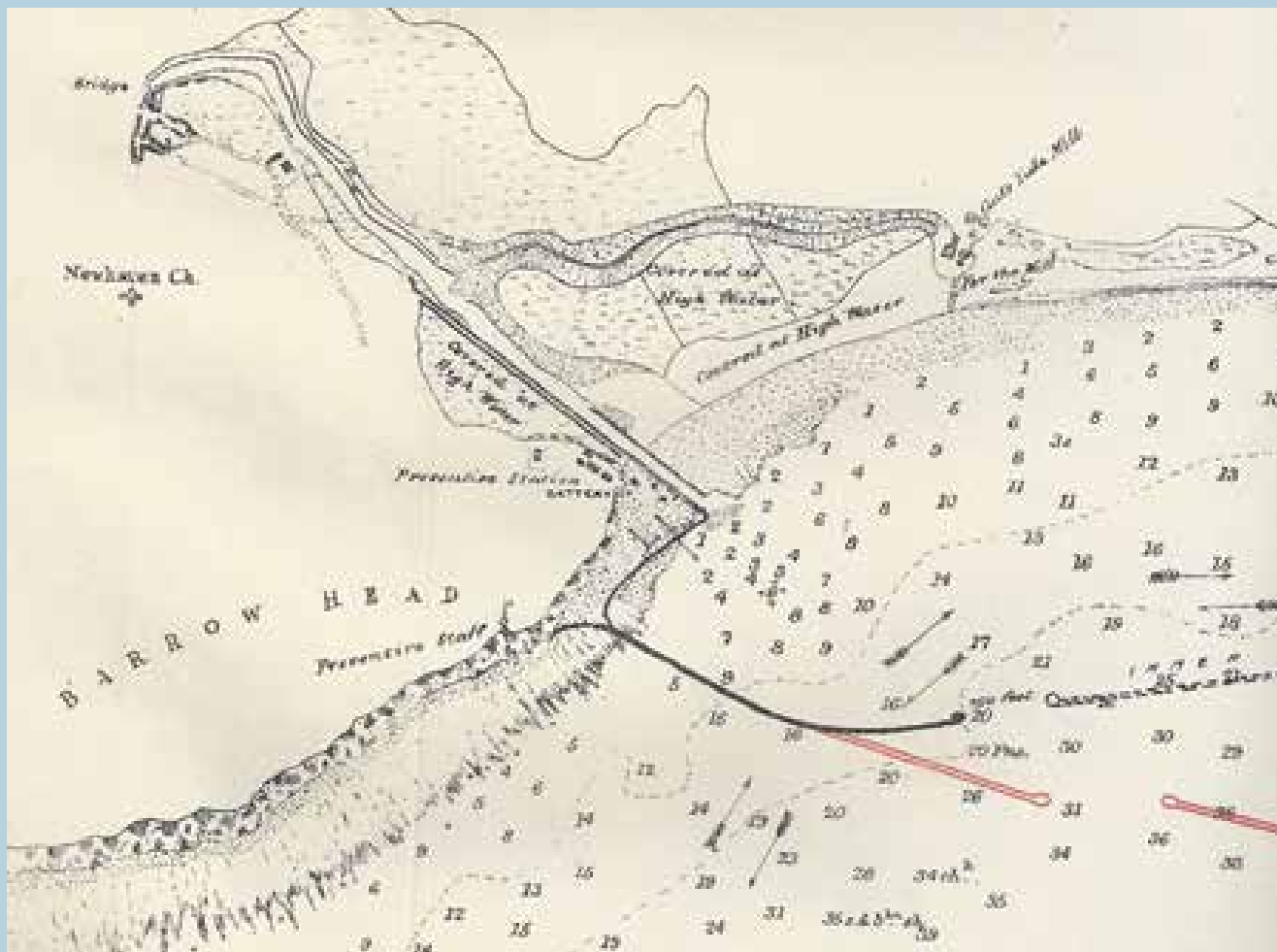
The paint for the final colour had to be professionally mixed, and a Zinsser paint was selected for the protective nature of the paint. The gun was painted in Basalt Grey which is how they looked in WWI. While there is still some work to do the team are proud of their achievement.

# Our Newhaven

Your memories, your photos, your comments, your town...



Image can be viewed at: [www.ournewhaven.org.uk/places/old-newhaven-various/maps-of-newhaven](http://www.ournewhaven.org.uk/places/old-newhaven-various/maps-of-newhaven)



*Our image this time is a map drawn in 1884, but based on an older one. Not much is shown of the town but it's more concerned with the harbour and Seaford Bay.*

At the top left is the old toll bridge. North Quay, Denton Island and the swing bridge are not shown though they had existed since the 1860s. Moving downriver, Sleepers Hole is shown as 'covered at high water' as is the creek stretching eastwards to Tide Mills. No details of the East Quay or Railway Quays are shown.

At the harbour mouth, the East Pier is not shown, but the breakwater and promenade are. However, note that there's an alternative position for the breakwater end, as well as the western ends of two more proposed harbour arms. One of these, had it been built, would have stretched out from the shore near the Buckle in Seaford. Newhaven might have had a large deep water harbour much the same as Dover, with its Eastern Arm, Southern Mole and Western Breakwater. What would our town have

been like? Probably rather busier and with no gap between Newhaven and Seaford!

'Our Newhaven' is the town's 'living history' website, with around 3,000 pages and 11,000 images of the town, its people, its stories and history. Why not have a look, and maybe even add your own memories and photos – it's easy to do and there's on-line help to guide you. [www.ournewhaven.org.uk](http://www.ournewhaven.org.uk)



▲ Cornish Gig, *Martlet* just launched on her maiden voyage on 21st March

## NEWHAVEN GIG ROWING CLUB

**Back in March, Newhaven Gig Rowing Club (NGRC) celebrated the naming of its newly refurbished wooden gig *Martlet*.**

With celebrant David Harland to officiate over the ceremony, and backed by the Wreckers sea shanty ensemble, *Martlet* was launched into Newhaven Harbour on her maiden voyage. At the time of writing in April, *Martlet* and her NGRC crews will be racing at the World Pilot Gig Championships at the Isles of Scilly, an amazing regatta of

over 100 gigs lined up along the beach and out to sea. NGRC are keen to attract younger rowers over 16 but welcome all ages. They are also seeking volunteers to help by looking after their 3 gigs. Alongside competitive rowing, they train people with no previous experience and go out on social rows into Seaford Bay and up the River Ouse.

# Ouse Valley Morris

*In bygone years, no English village event was complete without the fluttering hankies and jingling bells of a team of Morris Dancers. This folk tradition originating in the 15th century often contains steps, costumes and music varying according to the region.*



One exciting feature of Morris Dancing often includes characters such as owls and horses to add humour to the dance. Ouse Valley Morris Dancers have recently been awarded a grant from Newhaven Town Council to support the members with equipment; a smock, ribbons, bell pads and a Shoal of grey mullets. Grey mullets are a feature of the river Ouse, which they hope to represent in their dances to boost their local identity.

“ *With many of us completely new to Morris, we have found joy in learning the traditions and creating our own. We dance to support community events and causes, as well as to mark the seasons and to celebrate our beautiful local landscape. We also enjoy a singsong in the pub afterwards!*

*The Ouse Valley Morris Dancers are an inclusive, mixed gender side, with members from all walks of life.* ”



To find out where they will be dancing in the coming months you can check their website, [www.ousevalleymorris.co.uk](http://www.ousevalleymorris.co.uk), or follow them on Facebook and Instagram [@ousevalleymorris](https://www.instagram.com/ousevalleymorris).

To get in touch, email them on [hello@ousevalleymorris.co.uk](mailto:hello@ousevalleymorris.co.uk). They would especially love to hear from musicians!

## DRINK & DINE

One of the most rewarding parts of running Drink & Dine is hearing what customers love most. One drink that has become a real customer favourite recently is the Hugo Spritz light, refreshing, and perfect for sunny afternoons by the coast.

### HUGO SPRITZ

#### Ingredients:

- 150ml Prosecco
- 50ml sparkling water
- 25ml elderflower cordial or liqueur
- Fresh mint leaves
- Lime slices
- Ice

For a refreshing non-alcohol version, try replacing Prosecco and Sparkling Water with Soda Water.



“ *Supporting local means everything. Not just in words, but in the daily choices people make to dine, drink, and spend time in independent places like ours. In return, we hope Drink & Dine continues to be a place where people come together for good food, good drinks, and good memories, whether it's a quick coffee, a long brunch, or that evening celebration that is just so special.* ”

**Lucie, Drink and Dine**

# NEWHAVEN ROCKS!



**Newhaven Rock** - a joyful idea imagined by local young person, Arrietty Kirkwood - has been brought to life by Hospitable Environment as part of their Research Ready Communities project.

Originally designed as the sign on top of an old-fashioned sweet shop selling Newhaven Rock, this part of Arrietty's vision is now a reality, celebrating creativity, community voice, and the power of young people's ideas to shape our town.

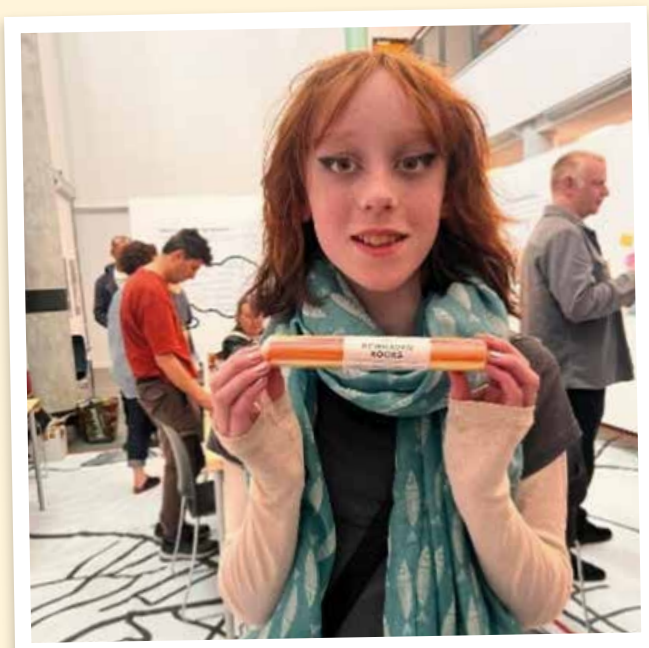
“ It is so amazing that my dream has come true. I have taken it to school to share some rock with my friends. ”

**Arrietty**



The project builds on the 2024 People's Plan for Newhaven, a community-led initiative co-created with residents to imagine a future plan for the town they love. Through workshops and collaboration, local people shaped and shared their vision for Newhaven's future.

Alongside Newhaven Rock, other community ideas have come to life, including a DJ school that took place last autumn, and a young artists open call exhibition: Emerging Sussex for Artwave 2025. With the support of Newhaven Town Council, Chalk Cliff Trust and the Enjoolata Foundation, Emerging Sussex will take place again this year at the end of September, and young creatives aged 14 - 25 from across Sussex are invited to join the exhibition for free.



Sign up to the Hospitable Environment mailing list on their website ([www.hospitable-environment.com](http://www.hospitable-environment.com)) to find out more and look out for Newhaven Rock at their summer events and at the Newhaven Tourist Information Centre.

@hospitable-environment  



# Plants Take Centre Stage in School's SEND Project



*A life skills project at Denton Community Primary School received a boost from a nearby family-run business when Paradise Park garden centre donated what was needed to get the scheme underway.*

The Acacia Road school's specialist autism facility is running a hands-on life skills project focused on growing food outdoors. The initiative forms part of the AQA (Assessment and Qualifications Alliance) Unit Award Scheme, helping its children develop practical, real-world skills they can use as they grow into adulthood.

Paradise Park donated strawberries and other vegetable plants along with some multipurpose plant food and Tomorite to kickstart the work. Executive director, Benjamin Tate, said:

*"It's fantastic to support the school, especially as it is so close to our Newhaven garden centre. Learning*

*to grow food outdoors is particularly valuable for SEND children, helping them stay focused, build confidence and develop important life skills while connecting with nature."*

The children will be busy sowing seeds using egg trays and making use of a pop-up greenhouse. They will grow herbs, fruits and vegetables including peas, carrots, tomatoes, cucumbers, peppers, strawberries, mint, thyme and chives. They will transfer the seedlings to larger pots and take the plants home to continue their growing journey.

Lara Blotz, the school's Deputy Headteacher & Autism Facility Lead, said:

*"The children love being outdoors and are currently working through the AQA life skills programme, which includes growing food outdoors. This project gives them valuable, practical experience that supports their development and independence."*

The project should help to increase the students' knowledge of food-growing, develop their practical life skills while offering hands-on engagement and participation along with confidence building through nurturing plants.

▲ Pictured Left to Right: Chee from the Paradise Park plant team, store supervisor Andy, Lara Blotz the Deputy Headteacher & Autism Facility Lead, and Melissa Tsapparelli teaching assistant.

# Calligraphy Blooms

in Newhaven



Do you have a favourite tool or medium?

I'll often mix custom calligraphy inks using gouache. I really enjoy experimenting with tones and creating custom shades that feel unique and personal. I often use the colour wheel to find combinations that either complement or contrast beautifully together.

How would you describe your personal style, and how has it changed over time?

There are so many different styles - traditional scripts like Copperplate and Spencerian to more contemporary modern calligraphy. My own style naturally leans towards a more minimal, elegant and modern aesthetic.

What's the most difficult aspect of calligraphy for you?

Probably decorative flourishing. It requires such precise movement and pen control to create smooth, balanced oval shapes and loops. Although I've come a long way with it, I still feel like I'm learning every day. I think that's part of what makes calligraphy so rewarding.

How do you deal with creative blocks and perfectionism?

I constantly remind myself that we're often our own harshest critics. Because I spend so much time working from home and with my children. I had to make a conscious effort to seek inspiration elsewhere. There have been pieces I've doubted that clients ended up absolutely loving, and that's taught me to trust the process a little more.

What advice would you give to someone just starting out in calligraphy?

Don't give up if your strokes don't look good straight away. That's completely normal. Focus on mastering the basic strokes first, then move on to lowercase letters, and eventually words and compositions. Slowing down is actually one of the biggest skills to learn and it makes such a difference to your progress.

What first drew you to calligraphy, and what made you stick with it?

I picked up my first calligraphy pen in 2015, during a time when I was struggling with anxiety and looking for a creative outlet. After trying Calligraphy, I was hooked.

How do you approach a new piece?

Most of my work begins with the client's vision. From there, I start planning the composition based on the word count, the size of the piece, and the overall feeling we want to create. I usually sketch everything lightly in pencil first and carefully decide on spacing, line placement and style.

Creative Feel designs offer calligraphy courses in Newhaven and across East Sussex. You can find out more about what is available at [www.creativefeeldesigns.com](http://www.creativefeeldesigns.com)

# Calligraphy • Competition •

# Summer Petals, Autumn Leaves

**Newhaven Matters are looking for two winners to add designs to our Autumn edition!**

Please send in digitally or via post your best calligraphic design for our next magazine.

Use either the word “**Contents**” or “**Autumn 2026**”. You may choose to include pictures of pumpkins or leaves whilst using colours such as **oranges**, **browns** and **yellows**. Don't worry if you don't have the right tools, a pen will do just fine. Our editors will create a digital version for you – so feel free to add notes for them! We are looking at potential. Please



focus your design on the dotted line and stay within the box. Beginners and children welcome!

*The winners will be announced on 2nd August*

2026 on the NTC Facebook, Instagram and website. Email: [newhavenmatters@newhaventowncouncil.gov.uk](mailto:newhavenmatters@newhaventowncouncil.gov.uk) or Post: 18 Fort Road, Newhaven, BN9 9QE

Draw  
Here!



Draw  
Here!



# cement

**Cement**, a new arts organisation based in Newhaven, is offering contemporary art courses taught in working artists' studios for people at all stages of their creative journey. Founded by Newhaven-based artists Julian Wild and Alison Hand, Cement works with everyone from beginners to established artists, to develop their practice and skills through daytime and weekend workshop classes and longer term mentoring. They have a strong focus on sculpture, painting, and material experimentation, and their courses join contemporary art with technical skill.

Based on the Quarry Road Industrial Estate, their building contains artists' studios, a sculpture workshop, and a large painting studio. They are passionate about hands-on making, and teach all things painting and sculpture, from metal sculpture to silicone mould-making and casting, sculptural ceramics, spray painting, oil and acrylic painting, and encaustic wax painting.



*“We are really excited to be part of the cultural landscape of Newhaven, supporting artists and makers, and introducing sculpture, painting, and drawing to those new to art. We held our first ever Cement art exhibition in April at the fantastic BN9 Studios, Marine Workshops, showcasing artists that we mentor and Cement studio artists. We had over 800 visitors, and we loved exhibiting in this vibrant and busy Newhaven focal point”.*



## Cement Success at Easter Event

A big warm thank you to all that attended the Newhaven Town Council Easter Event in April. After taking part in the Egg Hunt, the children were able to explore working with clay by making their own Easter characters. If you have not collected yours, feel free to give them an email to arrange pick-up!

[info@cementarts.co.uk](mailto:info@cementarts.co.uk)

Unit 10, Quarry Road Industrial Estate,  
Newhaven, East Sussex, BN9 9DD



*Newhaven Town Council invites  
all residents to join us for the*

## **Dieppe Raid Memorial Service**

**Sunday 9th August 2026  
at 3pm  
Memorial Green, South Way,  
Newhaven**



## **Lynne Mendelsohn**

**Counsellor MBACP (Senior Accred)**

**Have you been through a change or loss  
of any kind?**

**I can help you find a way forward**

**Face-to-face; online or  
telephone sessions**

**[lynnemendelsohn.co.uk](http://lynnemendelsohn.co.uk)  
07866-960396**

# PEACEHAVEN & NEWHAVEN BRIDGE CLUB



**Contract Bridge** is a globally popular card game enjoyed by millions of players across different cultures and skill levels. Many people are familiar with Rubber Bridge, a casual version often played at home among friends or family. In these relaxed settings, it's not uncommon to hear players attribute their fortunes to chance, with phrases like "*we didn't get the cards*" reflecting the role luck can seem to play.

However, in more formal environments such as bridge clubs, Duplicate Bridge is the preferred format. This version is designed to minimise the influence of luck by ensuring that multiple players compete using the same hands, allowing skill, strategy, and decision-making to determine the outcome. As a result, Duplicate Bridge offers a more competitive and balanced experience, making it the format of choice for serious players seeking to test and improve their abilities in a structured setting.

Peacehaven and Newhaven Bridge Club (PNBC) offers competitive Duplicate Bridge and lessons for absolute beginners. The Club is affiliated to the English Bridge Union and this gives players a lifetime grading and a current grading based on their most recent performances. You can find out how to join PNBC in our directory at the back.



*Summer is coming, and*  
**NEWHAVEN GREEN CENTRE**  
*have got it covered!*

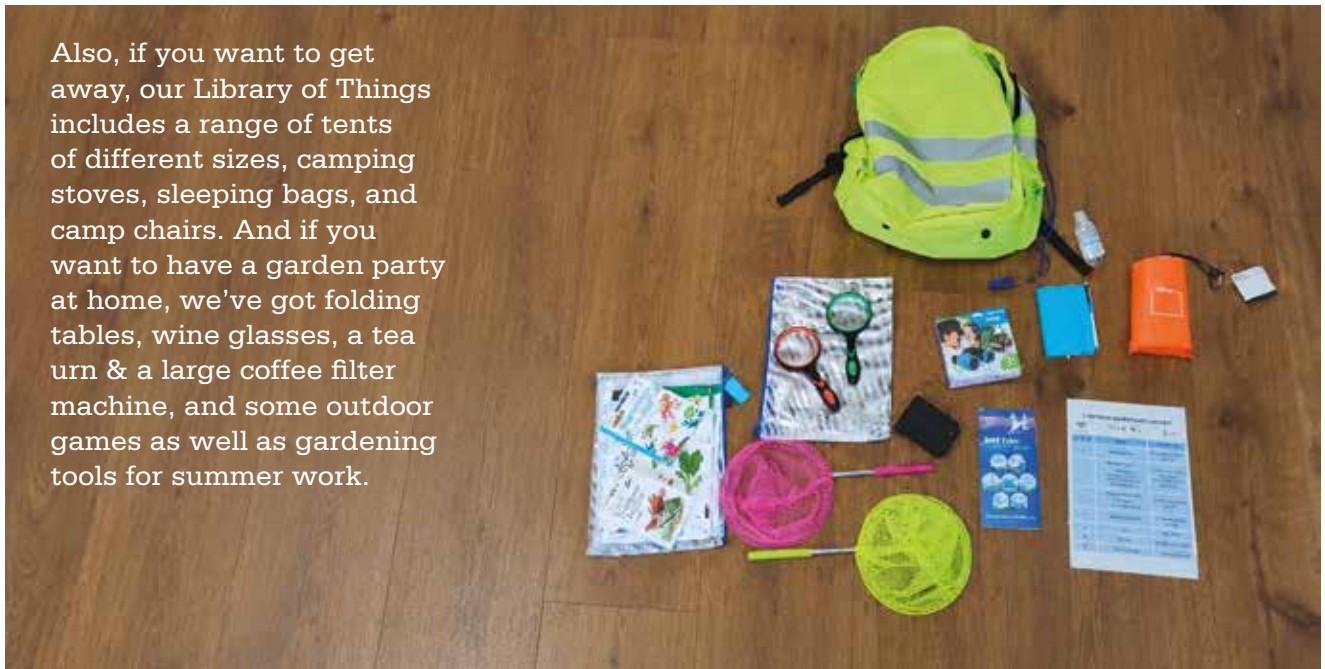
Newhaven Green Centre (NGC) have been donated five Outdoor Activity Rucksacks for gardens and urban parks, woodlands, chalk downs, shingly beaches and for wetland exploring. They have been put together by Ouse Valley Climate Action with help from Wakehurst Place. NGC are delighted to help make them available through The Library of Things. These small, light rucksacks have all the equipment you need to get kids exploring various exciting environments, including nets, magnifying glasses, binoculars, maps, books, notepads, picnic mats and more... just add kids!



If you want to get away, The Library of Things includes a range of tents of different sizes, camping stoves, sleeping bags and camp chairs. If you want to have a garden party at home, there are folding tables, wine glasses, a tea urn, a large coffee filter machine, outdoor game as well as gardening tools for summer work.

You can find Newhaven Green Centre's Library of Things at Newhaven library on Thursdays 10am-12:00 or visit their website to find repair Café dates and more at: [newhavengreencentre.com](http://newhavengreencentre.com).

Also, if you want to get away, our Library of Things includes a range of tents of different sizes, camping stoves, sleeping bags, and camp chairs. And if you want to have a garden party at home, we've got folding tables, wine glasses, a tea urn & a large coffee filter machine, and some outdoor games as well as gardening tools for summer work.



The **Rainy Day Foundation** is a small, not-for-profit organisation founded by a group of Trustees who came together after personally experiencing the devastating impact of suicide. United by loss and a shared commitment to make a difference, they created this foundation to offer hope, connection, and accessible mental health support for people in our local communities of Newhaven, Seaford and Peacehaven.

Their mission is simple: ensure that no one has to **face life's difficulties** alone. Through funding affordable therapy and raising awareness about suicide prevention, they aim to make help easier to reach and remove the barriers that

so often stop people from getting the support they need.

One of their activities to help raise fun includes a clothes donation collection. You are


able to purchase clothes from Rainy Day on the Vinted App to help support their cause. Alternatively, you can visit their website and make a donation at [www.rainydayfoundation.org.uk](http://www.rainydayfoundation.org.uk).

▲ Vinted Account: [rainy.day.foundation](https://www.vinted.com/charity/rainy.day.foundation)

# THE COMMUNITY CLOSET

As sustainability becomes a hot topic in Newhaven, we are beginning to see clothing swap shops become increasingly popular. It is a fantastic time for people to find some goodies whilst enjoying cake and conversation. The Community Closet at the Hilcrest Centre holds monthly meet ups where attendees are welcome to bring an item to swap for another, or find something they need, without high costs and adding to the increasing issue of fast fashion.

There are clothing options for all age groups and children's activities. Their goals are simple: connect the community, protect the planet and spread kindness.

 @newhavencommunitycloset



## GRANTS

# NEWHAVEN BUSINESSES OFFERED UP TO £15,000

Businesses in Newhaven can apply for grants of up to £15,000 to expand, upgrade premises and invest in low carbon projects, following the launch of a new two-year funding programme from Newhaven Enterprise Zone (NEZ).

For more information and an application form, go to the NEZ website:

[newhavenenterprisezone.com/nez-forward/nez-business-growth-fund](https://newhavenenterprisezone.com/nez-forward/nez-business-growth-fund)

## COMING SOON

### Newhaven Town Council Grants

Newhaven Town Council offers small (up to and including £500) and large (£501 up to and including £3,000) discretionary grants to charitable and non-profit making organisations. The next "window" will open in September. Keep an eye on our website and social media channels for more information.

# Events

## SUMMER EVENTS '26

### NEWHAVEN TWINNING ASSOCIATION

Games Evening | 17th July

Norman Hopson: 01273 588193

norman.hopson@btinternet.com

### DANCING AROUND NEWHAVEN WITH DITCHLING MORRIS

Newhaven Town Centre | 23rd July

ousevalleymorris.co.uk

### N.I.P.P.E.R.S SUMMER PLAYScheme

| 23rd July – 2nd September

East Side Social Centre

### NEWHAVEN GREEN CENTRE

| July 12th 2.30-4.30

Newhaven Repair Café

Riverside Hall, BN9 9BP: Bring along broken household items to be mended by our friendly team and enjoy free tea and cake.

### DANCING AROUND NEWHAVEN WITH BLACKPOWDER

| 6th August

ousevalleymorris.co.uk

### DIEPPE RAID

| 9th August

newhaventowncouncil.gov.uk

All residents welcome to join.

Info: 01273 516100

admin@newhaventowncouncil.gov.uk

### DIVERSITY UNITED, F.C FOOTBALL FUN DAY

| 19th August, Newhaven Football Club, Fort

Road, Newhaven, BN9 9DA

### THE HARVEST FESTIVAL

Newhaven Town Centre | 3rd October

newhaventowncouncil.gov.uk

01273 516100

# MARINE WORKSHOPS SUMMER 26

# BN9

RAILWAY APPROACH | NEWHAVEN | BN9 OER

### OUSE VALLEY ART CLUB

Exhibition | Jul 1 - 5

### TURPS ART SCHOOL

EAST SUSSEX END OF YEAR SHOW

Exhibition | Jul 4 - 12

### MUTUALLY ENTANGLED

Alumni Exhibition | Jul 16 - Aug 2

### LIMINAL: FOLIO 14 GROUP SHOW

Exhibition | Jul 7 - 12

### CONNECTIONS\_AT

Exhibition | Jul 14 - 19

### AT THE EDGE: CAROL HAVARD & SARA CLIFFORD

Exhibition & Residency | Jul 28 - Aug 1

### APEC @ NEWHAVEN

Exhibition | Aug 4 - 9

### PEACEHAVEN ARTS & CRAFTS CLUB

Exhibition | Aug 11 - 23

### QUAYSIDE ARTS COLLECTIVE

Exhibition | Aug 6 - 23

### CONNECTIVE THREADS

Exhibition | Aug 27 - 30

### ARTWAVE 2026

SUSSEX SOCIETY OF PAINTERS | Aug 28 - Sept 13

FROM THE GROUND STUDIO | Sept 8 - 20

EMERGING SUSSEX | Sept 17 - 20

+ open studios around Newhaven | Sept 5 - 20

### LUCY FARRANT

Exhibition | Sept 24 - Oct 4

### + WEEKEND EVENTS AT THE SIDINGS

DATES, TIMES AND DETAILS AT  
[NEWHAVENENTERPRISEZONE.COM  
/MARINE-WORKSHOPS](http://NEWHAVENENTERPRISEZONE.COM/MARINE-WORKSHOPS)

SUBSCRIBE TO STAY UPDATED  
+ FOLLOW @CREATIVENEWHAVEN

The BN9 Programme is managed by Towner and supported  
by the Newhaven Enterprise Zone and Lewes District Council.



# Workshops, Clubs and Activities

## ARTS, CRAFTS & IT

### Art Techniques with Carol Havard

Kids Adults

Pottery, Art, Workshops, and more. For more info, contact [info@art-techniques.co.uk](mailto:info@art-techniques.co.uk) or 07944 595505

### Into Art

Adults

Hillcrest Centre. Mondays 10am-12pm and Fridays; 10am – 1pm. £6hr. Book: [wildseaarts@gmail.com](mailto:wildseaarts@gmail.com)

### Life Drawing

Hillcrest Centre. Wednesdays: 10:30am – 1pm. Book: [julianlebas@yahoo.com](mailto:julianlebas@yahoo.com)

### Newhaven Art Club

Adults

Peacehaven Evangelical Church Hall. Mondays 2pm – 4pm [www.newhavenartclub.co.uk](http://www.newhavenartclub.co.uk) Chris Cook on 07887 520708 or [newhavenartclub@hotmail.com](mailto:newhavenartclub@hotmail.com)

### Cement Studios

Adults

View Courses for all levels and ages: [www.cementarts.co.uk](http://www.cementarts.co.uk)

### Wood Creatives

Kids Adults

Hillcrest Centre. Mon-Fri 9:30am – 3:30pm. Thursday evening: 6pm – 9pm. Book with Joe: 07768 331038 or [enquiries@woodcreatives.co.uk](mailto:enquiries@woodcreatives.co.uk)

### Children's Art Classes

Kids

Hillcrest Centre. Wednesdays: 4:30pm – 5:30pm (Term Time). Contact: [juliadunstandesign@gmail.com](mailto:juliadunstandesign@gmail.com)

### Knit & Natter

Adults

Newhaven Day Club  
Mon: 1:30-3:30pm

### Newhaven Photographers Collective

Adults

Email: [phocol.dt@gmail.com](mailto:phocol.dt@gmail.com)

## YOUTH GROUPS

### 2nd Denton & South Heighton (Ralph Readers Own) Group

Kids

[scouts.org.uk](http://scouts.org.uk)

### 3rd Newhaven Scout Group

Kids

St Leonards Church Hall, Denton. Squirrels (4-6yrs) Tue 5 – 6pm  
Beavers (6-8yrs) Thu 5:15 – 6:15pm  
Cubs (8-10yrs) Thu 6:30 – 8pm  
Scouts (10-14yrs) Wed 7:15 – 20:45  
[join.3rdnewhaven@seahavenscouts.org.uk](mailto:join.3rdnewhaven@seahavenscouts.org.uk)

### 21 Detachment Newhaven Army Cadet Force

Kids

[armycadets.com](http://armycadets.com) Transit Road, Newhaven, BN9 0BB  
[facebook.com/Sussex\\_ACF](https://facebook.com/Sussex_ACF)

### Newhaven & Seaford Sea Cadets

Kids

Contact: [admin@tsdefiance.co.uk](mailto:admin@tsdefiance.co.uk)  
[sea-cadets.org/newhavenseaford](http://sea-cadets.org/newhavenseaford)

### Newhaven Youth for Christ

FREE Kids

St Michael's Church Hall. (Term time) Thurs (11-18yrs) 6 – 7:30pm  
Nintendo switch, pool table, craft, board games & free meal

### SCDA Clubs & Groups

Kids

Newhaven Youth Centre

Contact:

[youth@sussexcommunity.org.uk](mailto:youth@sussexcommunity.org.uk)  
(12-18yrs, Term time & Summer holidays)

Mon: Wellbeing Café, 5:30pm

Tues: L.A.S.T LGBTQ+ and allies' Project 4:15 – 5:30pm

Weds & Fri: Youth Club 6:30 – 8pm

## NIPPERS

Kids

East Side Social Centre  
After School Club: Mon-Fri.

£10 per session.

Little Nippers: Fridays 10am-12. £1 each. Contact: [nippers1973@outlook.com](mailto:nippers1973@outlook.com)

## WELLBEING

### Stay Active Longer

Adults

Exercises for healthier ageing. Hillcrest Centre. Thu: 11am – 12:00pm

Old Parcel Room, Bishopstone Station

BN25 2RB. Tues: 10am-11am

Contact Mary: 07773 022429

[marymovesit@gmail.com](mailto:marymovesit@gmail.com)

[Facebook.com/MaryMovesIt](https://Facebook.com/MaryMovesIt)

### Zara Yoga & Pilates

Adults

Mon: Mencap, 11am, Body Control

Pilates

Wed:

10am - Piddinghoe Hall, Body Control

Pilates

5:50pm - Mencap, Hatha Yoga

7:00pm - Mencap, Body Control Pilates

Fri:

9:30am – Mencap, Slow Flow Yoga

10:45am – Mencap, Yin Yoga

Contact Zara: 07532 418542,

[zarano1@msn.com](mailto:zarano1@msn.com)

### Yoga with Sue

Adults

Denton & Mount Pleasant Social Hall

Thu: 9:45am – 11:15am

Contact: 07721 611314

### Slimming World

Adults

Newhaven Day Club

Sat 7:30 & 9:00am

Tina: 07548 892488

Denton & Mount Pleasant Social Hall.

Thursday: 5:30, 7:00pm

Tracey: 07736 047196

### Pilates Classes

Adults

Hillcrest Centre.

Tue: 11:30am – 12:30pm.

Contact Tash: 07831 120600

### Meditation

Adults

Hillcrest Centre. Fri: 6 – 7pm.

Contact: [scarletlolocooking@gmail.com](mailto:scarletlolocooking@gmail.com)

## MUSIC, DANCE & DRAMA

### Ballroom Dancing with Studio Tempo

Adults

Hillcrest Centre. Fri: 6:30 – 8:00pm.

Private Dance

Fri: 10am – 12:30pm

Book: 01273 476565

### Haven Harmonies

Adults

### Community Choir

Hillcrest Centre. Mon: 7:00 – 8:30pm.

Contact: [marianstanley43@gmail.com](mailto:marianstanley43@gmail.com)

### Newhaven Ukulele Group

Adults

Hillcrest Centre. Wed: 7 – 9pm.

Contact Peter: [peter1805@gmail.com](mailto:peter1805@gmail.com).

Beginners welcome.

### Haven Young Creatives

FREE Kids

Drama sessions. Hillcrest Centre (Term time).

Tues (8-12yrs) 4 – 5:30pm

(13-18yrs) 5:45 – 7:45pm

### Bopping Babies

Kids

Paradise Park. Tuesdays: 1st & 3rd each month. 11am-11:45am. Pre School Dance, singing and a giggle with puppet friends, pom poms and pixie wings. £7 per child.

### Singing Mamas

Kids

Singing for wellbeing Group for all women, not just mums. No singing experience needed.

### Tide Mills Choir

Marine Studios, 4th Sat of each month 12:00 – 3:00pm

[ellen.muriel6@gmail.com](mailto:ellen.muriel6@gmail.com)

### Norcross Dance Centre

Kids

Ballet, Tap, Contemporary, Acro,

Disco, Musical Theatre, Street,

Commercial, Drama, Group Singing,

Baby Music and Sensory, Tinytots

Ballet. Contact Alison: 07789 963560

Email: [norcrossdancecentre@gmail.com](mailto:norcrossdancecentre@gmail.com)

### Ouse Valley

New! Adults

### Morris Dancers

[www.ousevalleymorris.co.uk](http://www.ousevalleymorris.co.uk)

Contact: [hello@ousevalleymorris.co.uk](mailto:hello@ousevalleymorris.co.uk)

Also interested in recruiting musicians.

### Private Dance with

Adults

### Studio Tempo

Fri: 10am-12:30

Hillcrest Centre

Contact: 01273476565

## SPORT

### Denton & South Heighton Junior Football Club

Kids

The Hollow, South Heighton BN9 0TP. Saturdays 9am-12pm. Age group training times vary. Contact: [dashchairman@gmail.com](mailto:dashchairman@gmail.com)

### Harbourside

Kids Adults

### Gymnastics Academy

[harboursidegymnasticsacademy.co.uk](http://harboursidegymnasticsacademy.co.uk) or call: 07395 307616

### Crossfit Chimera

Kids

Fun, dynamic fitness classes building strength, confidence and athletic skills for life! (5-17yrs) [crossfitchimera.co.uk](http://crossfitchimera.co.uk)

### Traditional Yang Tai Chi & Dragon Kung Fu

Adults

Lewes Road Hut.

Thu: 6pm – 7:30pm & 7:30pm – 9pm  
Contact Jon: 07715 664228  
[dmaa.co.uk](http://dmaa.co.uk)

### Savage Martial Arts

New! Kids Adults

Hybrid of Muay Thai, Krav Maga and Jiu Jitsu

Little's (4-7yrs) 4:15 – 5pm  
Juniors (8-12yrs) 5:15 – 6:15pm  
Adults (18+) 6:30 – 7:30pm  
Contact Nikki: 07920 755388  
[nikkifair125@gmail.com](mailto:nikkifair125@gmail.com)

### Affinity Rowing Club

Adults

Contact: [info@affinityrowingclub.co.uk](mailto:info@affinityrowingclub.co.uk)

### Denton Table Tennis Club

Adults

Denton Church Hall.

Wed: 7 – 9pm

Fri: 10am – 12:00pm

Contact Rosemary: 07999 860333

### Newhaven Gig

Kids Adults

### Rowing Club

Ngrc.co.uk Contact: [admin@ngrc.co.uk](mailto:admin@ngrc.co.uk)

### Newhaven Football Club

Kids Adults

[Newhavenfc.co.uk](http://Newhavenfc.co.uk)

[newhavenfootballclub@gmail.com](mailto:newhavenfootballclub@gmail.com)

### Denton Cricket Club

Kids Adults

[Dentonsussex.play-cricket.com](http://Dentonsussex.play-cricket.com)

Contact: 07883 097264

### Hillcrest Boxing

Kids Adults

[hillcrestboxinggym.co.uk](http://hillcrestboxinggym.co.uk)

### Newhaven & Seaford

Kids Adults

### Sailing Club

[sailinginsussex.org](http://sailinginsussex.org)

[info@nssc.org.uk](mailto:info@nssc.org.uk)

### Newhaven Yacht Club

Kids Adults

[Newhavenyc.org.uk](http://Newhavenyc.org.uk)

### Newhaven Bowling Club

Kids Adults

Mon: 5:30pm

Wed & Sat: 10am

Friendly roll ups welcome.

Contact Jose: 07542 60830

Jan: 07766601125

[nbowlscsocialmedia@gmail.com](mailto:nbowlscsocialmedia@gmail.com)

[newhavenbowlingclub.weebly.com](http://newhavenbowlingclub.weebly.com)

### Newhaven Tennis Club

Kids Adults

[Newhaventennisclub.co.uk](http://Newhaventennisclub.co.uk)

Contact Bob: 07783 234894

[secretary@newhaventennisclub.co.uk](mailto:secretary@newhaventennisclub.co.uk)

### Petanque with Newhaven Twinning Association

Adults

Opposite The Hope Inn, Sundays, Spare Boules available.

Contact: 01273 588193

[norman.hopson@btinternet.com](mailto:norman.hopson@btinternet.com).

Looking for new members

### Denton Island Indoor

Adults

### Bowls Club

[dentonislandbowls.co.uk](http://dentonislandbowls.co.uk)

Contact: 01273 514664

### Newhaven Archery Club

Kids Adults

A friendly club offering courses and social activities.

[newhavenarcheryclub.co.uk](http://newhavenarcheryclub.co.uk)

[newhaven\\_archery@yahoo.co.uk](mailto:newhaven_archery@yahoo.co.uk)

### Newhaven

FREE Kids Adults

### Cricket Club

[newhaven.play-cricket.com/aboutus](http://newhaven.play-cricket.com/aboutus)

## INTEREST GROUPS

### Newhaven & District

Kids Adults

### Model Railway Club

Heatherside Business Park, Unit 4, Norton Road, BN9 0BZ

Weds: 7:30-10:00pm

Social, craft and skills activities

Email: [newhavendmrcub@gmail.com](mailto:newhavendmrcub@gmail.com)

Contact: 07563 840687

### Castle Hill Group

Adults

10am, 1st Sunday each month

Scrub management & more

[seahavenpr@aol.com](mailto:seahavenpr@aol.com)

Contact Graham: 01273 514942

### Friends of Tidemills

Adults

9-11am, 3rd Sunday each month

Litter pick & Conservation tasks

Contact Jim:

[brianjimskinner@gmail.com](mailto:brianjimskinner@gmail.com)

### Guesthouse Storytellers

Kids Adults

Hillcrest Centre

[Guesthousestorytellers.com](http://Guesthousestorytellers.com)

Email: [xanthe.gresham@gmail.com](mailto:xanthe.gresham@gmail.com)

Contact: 07812 181545

### Newhaven Historical Society & Museum

Adults

Talks, research and general enquiries

[newhavenhistoricalsociety.org.uk](http://newhavenhistoricalsociety.org.uk)

Contact: 07831 900130

### Newhaven Green Centre

Adults

Reducing Waste, Library of Things,

Bring and Take Table

Newhaven Library

Thurs: 10am-12

## SOCIAL

### U3a

Adults

Offers a range of groups and events at various venues. For more information, visit: [newhaven-peacehaven.u3asite.uk](http://newhaven-peacehaven.u3asite.uk)

### Denton Fellowship

Adults

2pm: Every 4th Tuesday

Contact Aileen: 07756 035454

### Newhaven Day Club

Adults

West Quay

Tue/Thu/Fri's

Variety of fun activities

Contact Tony: 01273 513189

### Newhaven Peacehaven Lions

Adults

[npslions.co.uk](http://npslions.co.uk)

### Rotary Club of

Adults

### Newhaven Coast West

Tuesday lunchtimes

Hillcrest Centre

Fund-raising to help others

Email: [whiteleyjacqui@gmail.com](mailto:whiteleyjacqui@gmail.com)

Contact Iris: 07852673169

### Blue Van Veterans

Adults

### Breakfast Club

9-11am

2nd Sunday of each month

Brewers Fayre

Email: [edafvbc@yahoo.com](mailto:edafvbc@yahoo.com)

Contact Steve: 0757019811

## SUPPORT GROUPS

### AA Meetings

Hillcrest Centre. Thurs: 7pm – 8:45pm

Meeching Hall. Weds: 9:30am

### Nebula

Hillcrest Centre.

Mon: 2-3pm. [facebook.com/groups/535810757234539](https://www.facebook.com/groups/535810757234539)

### Carers Café

Newhaven Enterprise Centre, every

1st Tuesday of the month, 11am-1pm.

[info@associationofcarers.org.uk](mailto:info@associationofcarers.org.uk)

A range of activities for carers and the people they look after.

### Childline

[childline.org.uk](http://childline.org.uk)

0800 11 11

### Warm Spaces Directory

[lewes-eastbourne.gov.uk/](http://lewes-eastbourne.gov.uk/)

[article/1280/welcome-spaces](https://www.lewes-eastbourne.gov.uk/article/1280/welcome-spaces)

Contact Newhaven Town Council on

01273 516100

### Bereaved By Suicide:

#### East Sussex

Please contact the Sussex Suicide

Bereavement Support Team on

07376 616628

[sussexbereavedbysuicide@cruse.org.uk](mailto:sussexbereavedbysuicide@cruse.org.uk)

### Samaritans

Tel: 116 123

[samaritans.org](http://samaritans.org)

*This listing is correct at the time of going to press and is not a comprehensive list of all the groups and courses in Newhaven*



# ART ~ WAVE

Visit over 150 artists & makers exhibitions across Newhaven, Seaford, Lewes and the surrounding villages

5th-20th September 2026  
[artwavefestival.org](http://artwavefestival.org)

Illustrated Newhaven Map by Tonwen Jones.  
Tonwen is exhibiting at Piddinghoe Church during Artwave 2026.  
Her work is available to buy at the Newhaven Tourist Information Centre, at the Marine Workshops.

Corringe's  
Headline Sponsor

VISIT  
LEWES  
COAST & COUNTRY

